

# INTELLIGHT BAGGING SCALE

with PaxGo AF Series



---

# Making the World Measurable

## Linking Your Smart Life



PaxGo Series - an intelligent bagging scale is widely used for granule packing.



# BAGGING SCALE

## With PaxGo Series

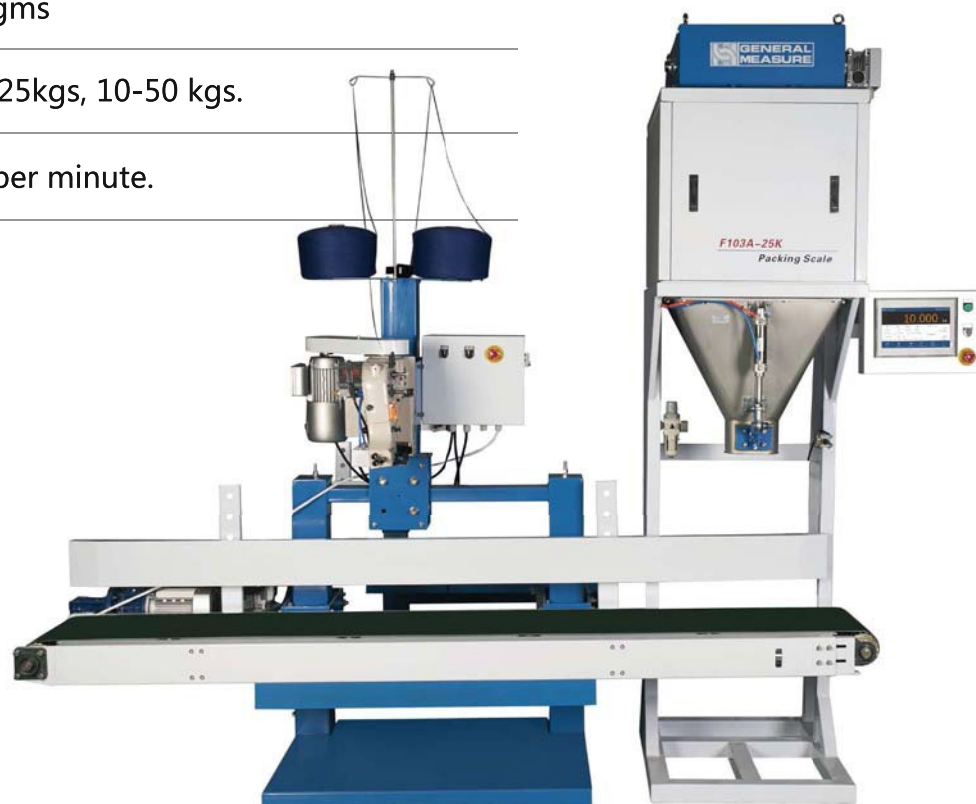
F103A is an automatic weigh filler, its self-optimizing controls can be precisely configured to your specific material flow, speed and accuracy requirements.

### ► Highlights

- Specially designed for granular products like Rice, Pulses, Plastic Granules, Animal Feed, Maize, Soybeans, Seeds etc.
- Equipped with self optimizing intelligent program for high speed operation.
- Can be easily mounted directly below the storage.
- Accuracy range  $\pm 10$ gms
- Models available in 5-25kgs, 10-50 kgs.
- Speeds upto 16 Bags per minute.

high speed  
▼ weigher

FOR GRANULES PACKAGING

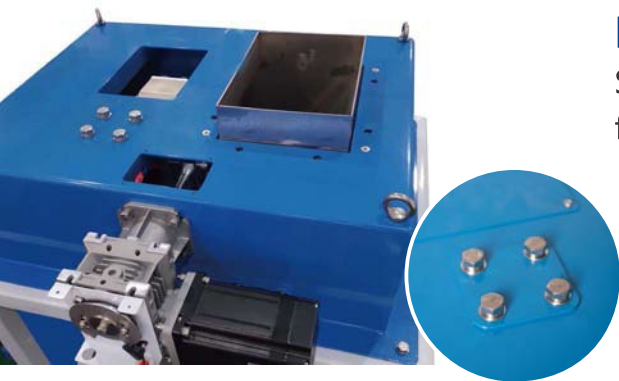




# Auto Filler -- PaxGo Series

## Industrial Design

Special design for industrial application, high speed and accuracy.



## Module Design

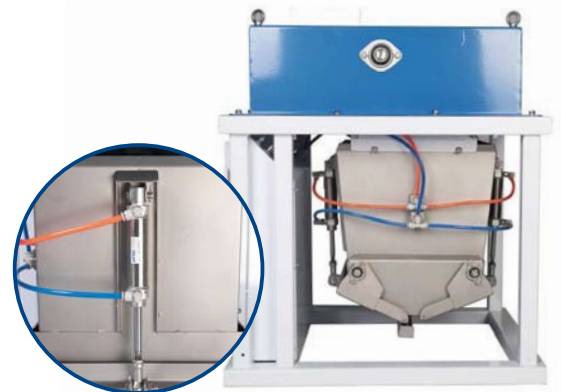
Standard flange interface for easy and fast installation.

► Load Cell Installation Location



Control Indicator

- The food contacting materials are all made of S304 stainless steel and can be used for food packaging such as rice, soybeans, corn, grains, mung beans, etc.
- International premium brand components ensure the product quality.



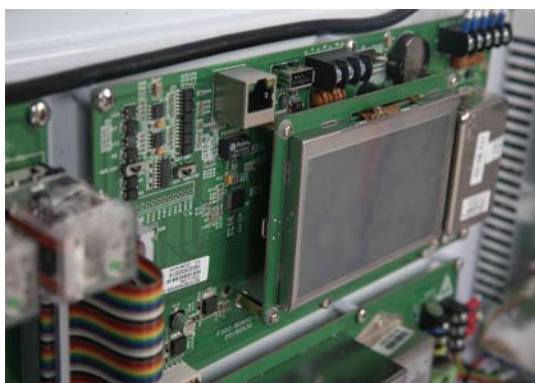
## Stepping Motor

For feeding control achieves intelligent auto adjustment fast and accurately.



## USB

Embedded USB for exporting data conveniently and system upgrading.

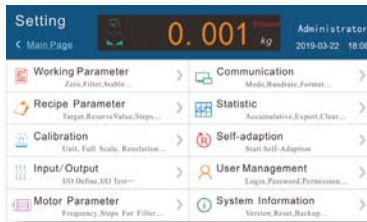


- General Measure independent R&D of packing controllers. The software system is perfectly customized for the equipment, making the packaging faster, more accurate and smarter.
- Dual serial port RS232/RS485
- Modbus TCP/IP
- 4G/5G Communication (Optional)



# User-friendly design

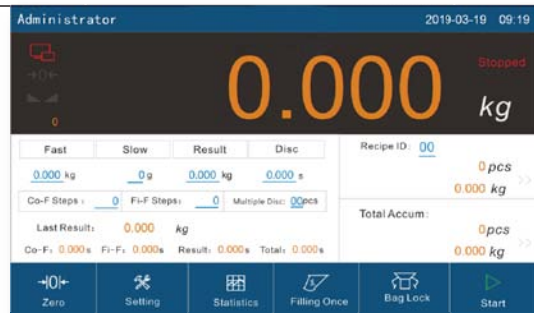
10-inch touch screen, real-time display of current status, detection of weight, recipe information, fast/slow feeding and other key data.



- Parameter interface optimization and upgrade.



- Observing data changes when setting parameters, which is simultaneous and intuitive.

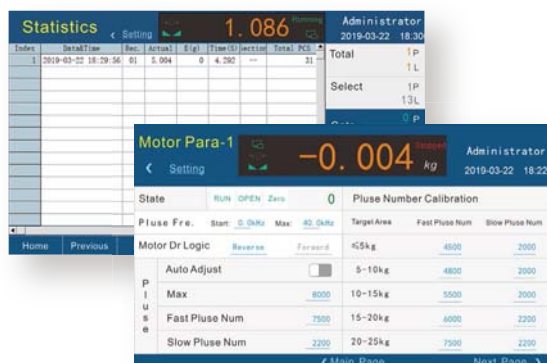


- Calibration according to different materials with step hints to make the field calibration more convenient.

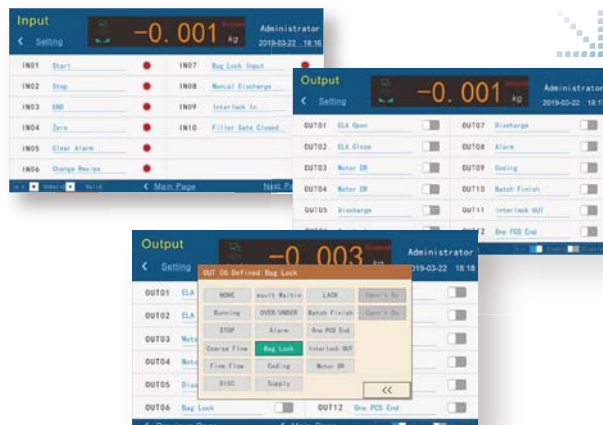


# Well-organized data management

Motor parameters: an interface can simultaneously display the motor status and parameters which is easy to debug.



All definitions of each port can be intuitively selected.

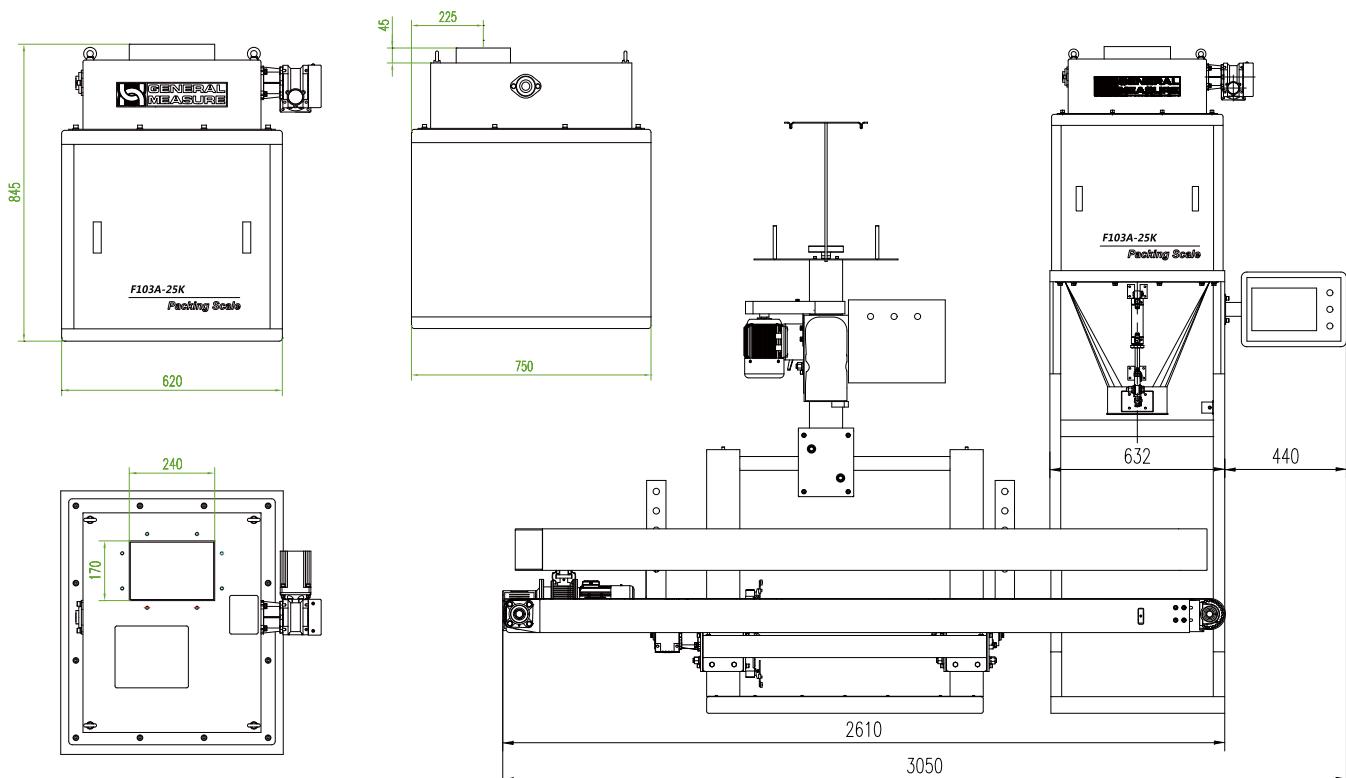


## Specification

Model	PaxGo Series AF-05K, AF-25K, AF-50K
Hardware	10 inch Touch Screen, Actuator, F301 Mainboard, 4G Signal Transmitter
Structure	Weigher Scale, Measuring Hopper, Electric Cabinet, Discharge Hopper
Filling Mode	Gravity/Step Motor
Controller	GM Weighing Controller
Communication	USB , RS232/485
Weighing Range	5~25kg, 10~50kg
Value for min. division	1、 2、 5、 10、 20、 50
Accuracy	±10g
Speed	≤1000BPH
Operating Temperature	0°C ~ 40°C
Operating Humidity	90%R.H condensation is not allowed
Power	AC110 ~ 260V.50/60HZ. Approximate 200VA
Material	Food contacting material: S304 stainless steel, others: S201

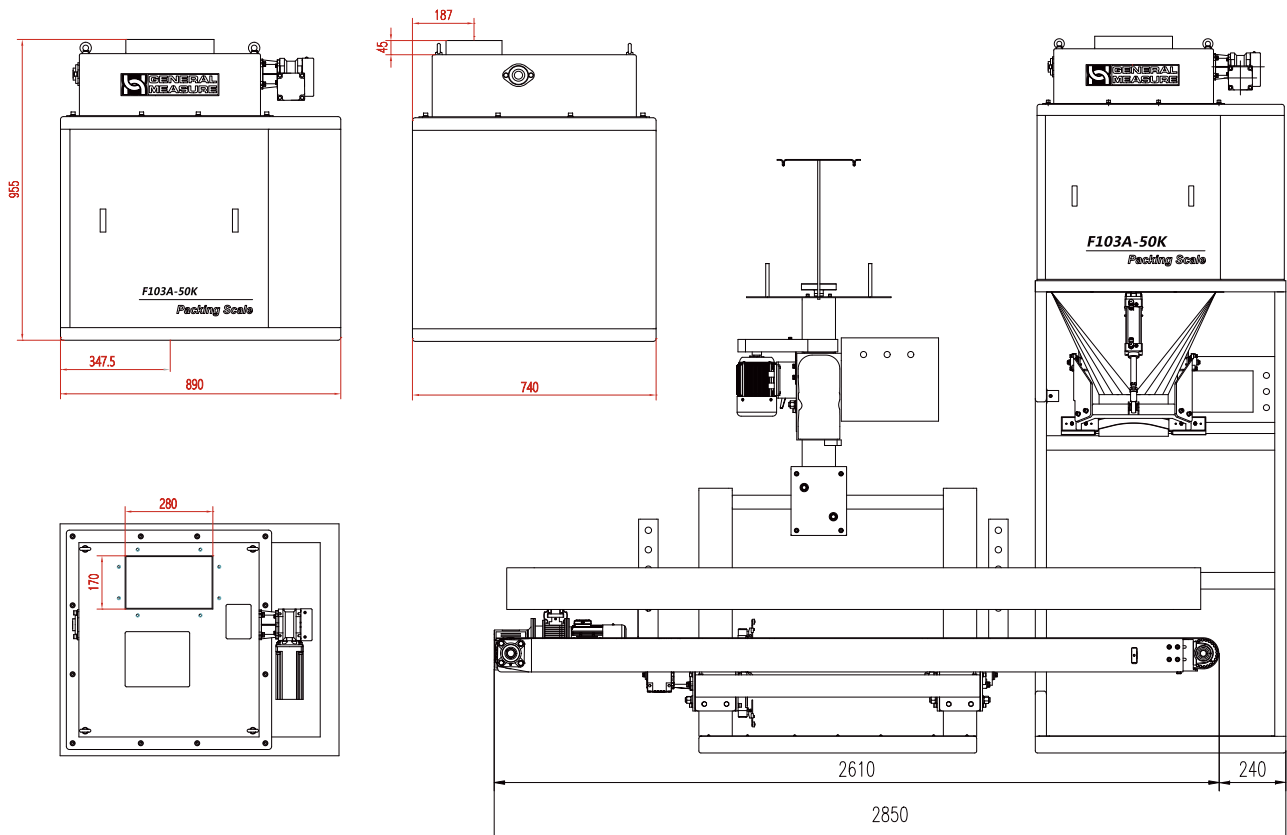
## AF-25K Dimensions

unit : mm



# AF-50K Dimensions

unit : mm



## General Measure Technology Co., Ltd.

Add: A1-3/F, Block C, Tongfang Information Harbor, No.11 Langshan Rd., North Area of High-tech Park, Xili, Nanshan District, Shenzhen, China.

Tel/Wechat: +86 185 6585 5789

E-mail: xjlv@szgmt.com

Web: www.gmweighing.com



LinkedIn



Facebook



Wechat