

# ChexGo Series

## Dynamic Checkweigher



# DYNAMIC CHECKWEIGHTER CW-15K

- Heavy load, for product weight up to 15kg, with accuracy under 5 grams;
- For pouches, bags, and soft-sided containers, bottles;
- Easy to operate with in inch screen, can store 100 different products;
- With different rejector option, can also integrate with metal detector.

## Multiple industrial application



Seed



Logistic



Automation



**1-15kg**

Weighing range



**±5g**

Accuracy



**110** +Pcs/min

Speed



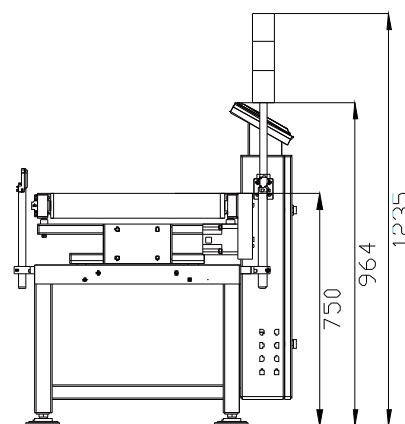
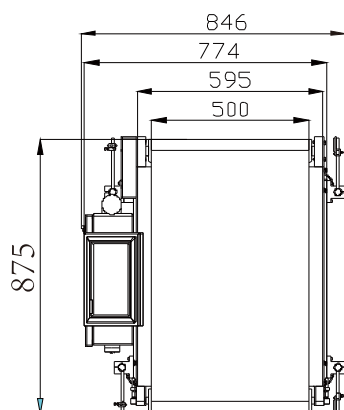
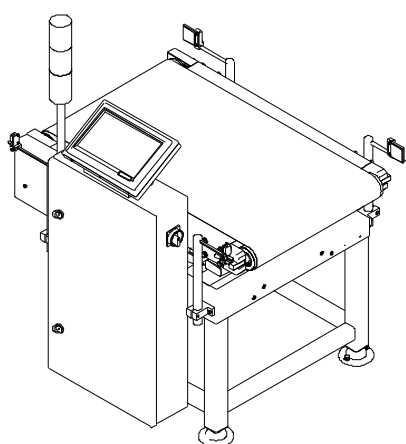
## Standard specification

Model	CW-15K
Weighing range	1~15kg
Scale division	1g
Highest Accuracy(3 $\sigma$ ) *	$\pm 5$ g
Highest Weighing speed *	110 pcs/min
Belt speed	8~90 m/min
Belt size	800×500mm
Weighing platform Height **	750±50mm
Tested object size	Length: 100~600mm Width: 50~450mm Height: 50~500mm
Belt material	PVC (black)
Structure of the material	Carbon steel, SS304 stainless steel (weighing platform)
Alarm light	3-color signal light (Red, yellow, green) , Optional buzzer
Display size	10-inch color touch screen
Rejector lineup	optional
Power	AC 220V, 50/60Hz, 300W
operating temperature	0~40°C
IP grade	IP54

\* Depend on the weight, size, and material of test object. Test accuracy: **5g at 120pcs/min**

## Dimensions

Unit:mm





[Linkedin](#)



[Facebook](#)



[Wechat](#)



## **General Measure Technology Co.,Ltd.**

Address: Room2208, Block A, Building 6, Shenzhen International Innovation Valley,  
Nanshan District, Shenzhen, Guangdong Province, P.R.China.

Tel/Wechat: +86 185 6585 5789

E-mail: [xjlv@szgmt.com](mailto:xjlv@szgmt.com)

Website: [www.gmweighing.com](http://www.gmweighing.com)