

# DYNAMIC CHECKWEIGHER CW-100K

- This product is widely used in Pharmaceutical production lines for highest weighing accuracy and repeatability;
- The checkweigher monitor manufacturing efficiencies and provide real-time data on your process;
- Product completeness and trends also provide feedback data to production line;
- It is also used in the application of checking completeness of secondary package to identify any missing items.

## Multiple industrial application



Food



Pharmacy



Accessories



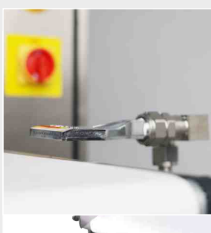
**1-500g**

Weighing range



**±0.1g**

Accuracy



**180+** Pcs/min

Speed



Standard specification

Model	CW-100G
Weighing range	1~500g
Scale division	0.05g
Highest Accuracy(3σ) *	±0.1 g
Highest Weighing speed *	180 pcs/min
Belt speed	5~60 m/min
Belt size	250×100mm
Weighing platform Height **	750±50mm
Tested object size	Length: 50~180mm Width: 20~80mm Height: 10~150mm
Belt material	PVC (white)
Structure of the material	Carbon steel, SS304 stainless steel (weighing platform)
Alarm light	3-color signal light ( Red, yellow, green ) , Optional buzzer
Display size	10-inch color touch screen
Rejector lineup	Options: swing type, air blow type, push type or lift up type rejector
Power	Single Phase AC-220V ±10%, 50/60HZ
operating temperature	0~40°C
IP grade	IP54

\*Depend on the weight, size, and material of test object. Test accuracy: 0.1g at 100pcs/min; 0.3g at 180pcs/min.

Dimensions

Unit:mm

