



Linkedin



Facebook



Wechat



## PaxGo Series

Intelligent Packing Filler



### General Measure Technology Co.,Ltd.

Address: Room2208, Block A, Building 6, Shenzhen International Innovation Valley,  
Nanshan District, Shenzhen, Guangdong Province, P.R.China.

Tel/Wechat: +86 185 6585 5789

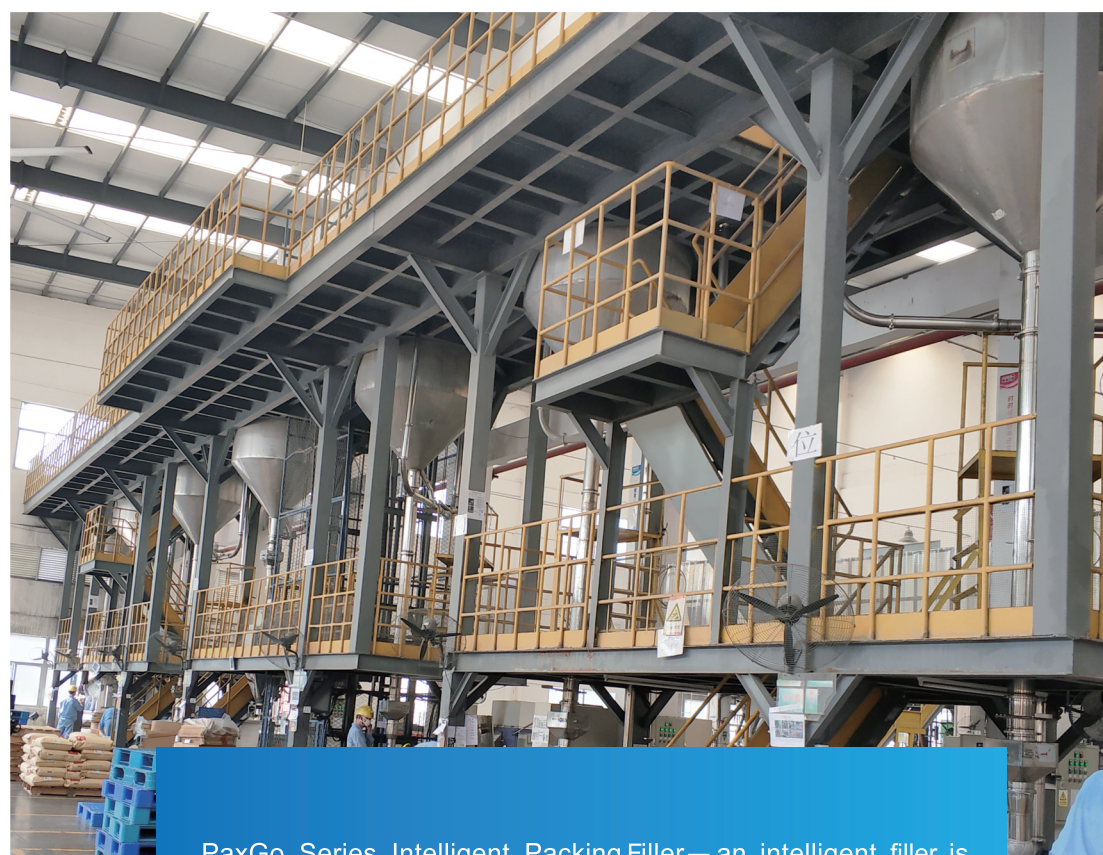
E-mail: xjlv@szgmt.com

Website: www.gmweighing.com



## Making the World Measurable

### Linking Your Smart Life



PaxGo Series Intelligent Packing Filler— an intelligent filler is widely used for granule packing.

## PaxGo Series

### Intelligent Packing Filler



Easy  
Operation



Automated  
Control



Accurate  
Weighing



High  
Efficiency

PaxGo is an automatic weigh filler its self-optimizing controls can be precisely configured to your specific material flow, speed and accuracy requirements.

### Features:

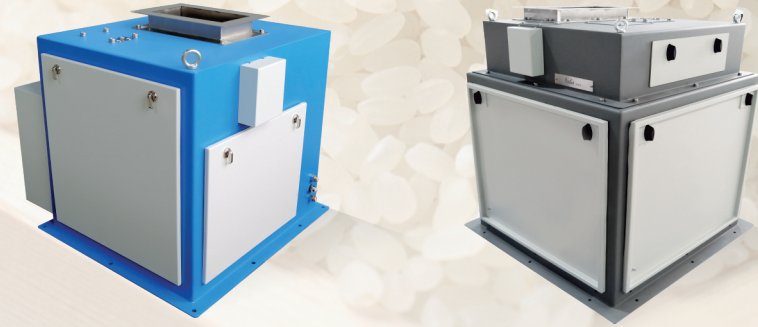
- Specially designed for granular products like Rice, Pulses, Plastic Granules, Animal Feed, Maize, Soybeans, Seeds, Sugar and other granular material;
- Equipped with self optimizing intelligent program for high speed operation;
- Best accuracy  $\pm 2g$ ;
- Models available in 0.25-5kg, 0.5-10kg, 5-25kg, 10-50kg;
- Speeds up to 16 Bags per minute.





## Industrial Design

Special design for industrial application, high speed and accuracy.



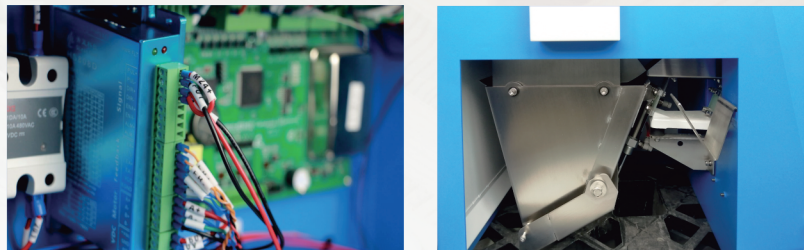
## User-friendly Design

- The food contacting materials are all made of S304 stainless steel and can be used for food packaging;
- International premium brand components ensure the product quality.



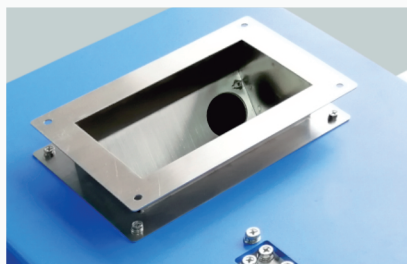
## Communication interface

- Dual serial port RS232/RS485;
- Standard Ethernet port;
- Modbus TCP/IP;
- 4G/5G Communication (Optional).



## Module Design

Easy installation and dismantling for washing down.



## Servo Motor

For feeding control achieves intelligent auto adjustment fast and accurately.



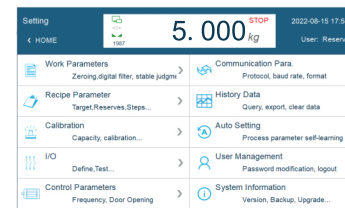
## USB

Embedded USB for exporting data conveniently and system upgrading.



## User-friendly design

10-inch color user friendly touch screen and graphical design interface. Simple operation without professional training.



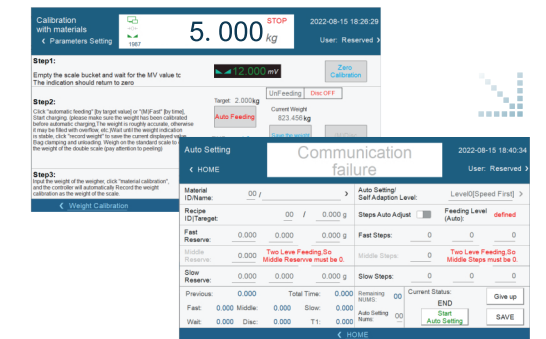
- Parameter interface optimization and upgrade.



- Observing data changes when setting parameters, which is simultaneous and intuitive.

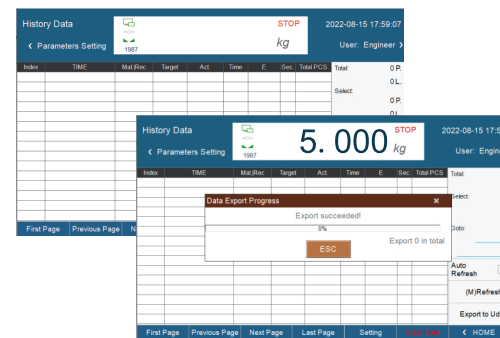


- Calibration according to different materials with step hints to make the field calibration more convenient.

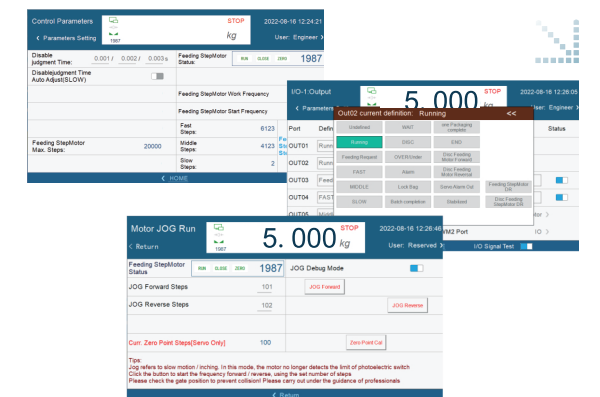


## Well-organized data management

- All definitions of each port can be intuitively selected.



- Motor parameters: an interface can simultaneously display the motor status and parameters which is easy to debug.





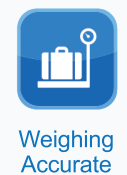
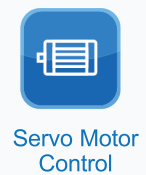
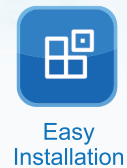
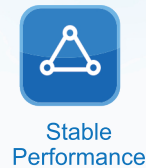
# GRANULE PACKING FILLER AF-50K



**10-50kg**  
Weighing range

**±20g**  
Accuracy

**800** +Pcs/h  
Speed



## Features:

- **Granular material:** design for big bag packing machine for plastic particles, rice, sugar and other granular material;
- **Easy dismounting:** module design of measuring hopper for easy cleaning;
- **Parameter setting:** self-adjust function with target value set only;
- **Stable performance:** servo motor controls feeding process;
- **Weighing accurate:** weighing range is 10-50kg. Speed can reach 800pcs/h and best accuracy is ±20g.



## Optional:



User-friendly interface design, vivid display, easy to operate.

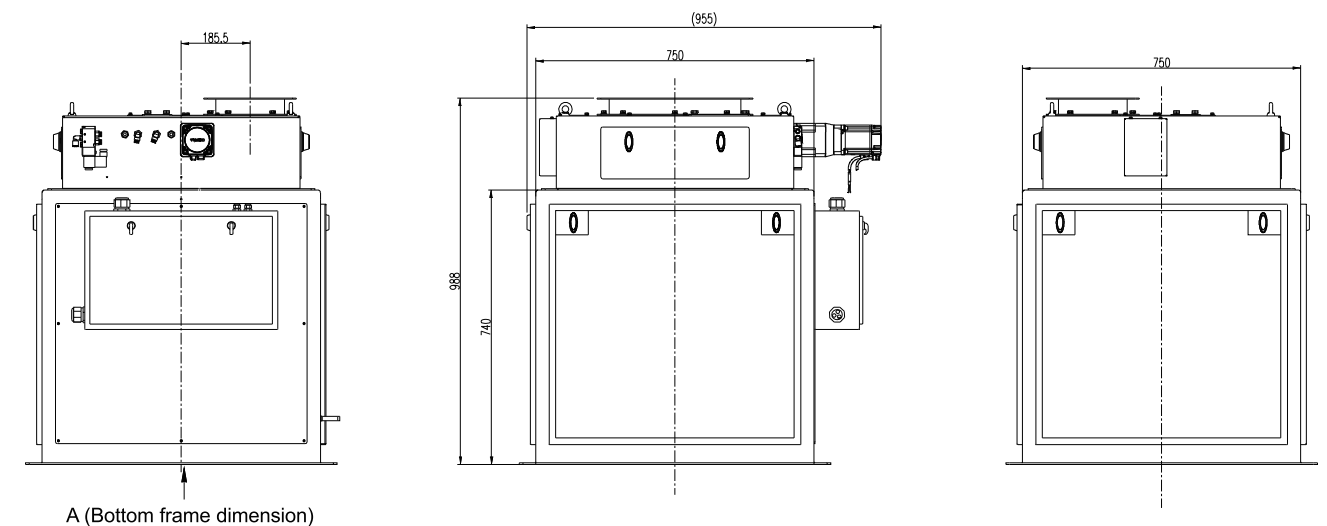
## Specification

Model	PaxGo AF-50K
Weighing range	10~50Kg
Division	1g
Best Accuracy*	±20 g
Speed *	Max.800pcs/h
Volume	86L
Feeding method	Feeding control by servo, pneumatic discharging
Material	SS304, carbon steel
I/O	8 output(5V), 8 input(24V)
Communication	RS485, Modbus TCP/IP
Pneumatic	0.4~0.6MPa
Power	Single Phase AC-220V ±10%, 50/60HZ
Working environment	0~40°C, 90%R.H condensation is not allowed

\* Normally, the diameter of the testing material 1-5mm.

## Structure & Dimension

Unit: mm





# PNEUMATIC VERSION AF-50K



**25-50**kg  
Weighing range

**±25**g  
Accuracy

**1100**+ Pcs/h  
Speed



Stable  
Performance



Easy  
Installation



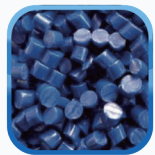
Pneumatic  
Cylinder Control



High Speed  
Weighing

## Features:

- **Granular materials:** design for big bag packing machine for plastic particles, rice, sugar and other granular material;
- **Easy installation:** module design, easy for installation and dismount;
- **Convenient setup:** self-adjust function with target value set only;
- **High-speed performance:** pneumatic cylinder control, speed can reach above 1100pcs/h;
- **Weighing accurate:** weighing range is 25~50kg, best accuracy is ±25g.



## Optional:



10-inch touch screen

User-friendly interface design,  
vivid display, easy to operate.

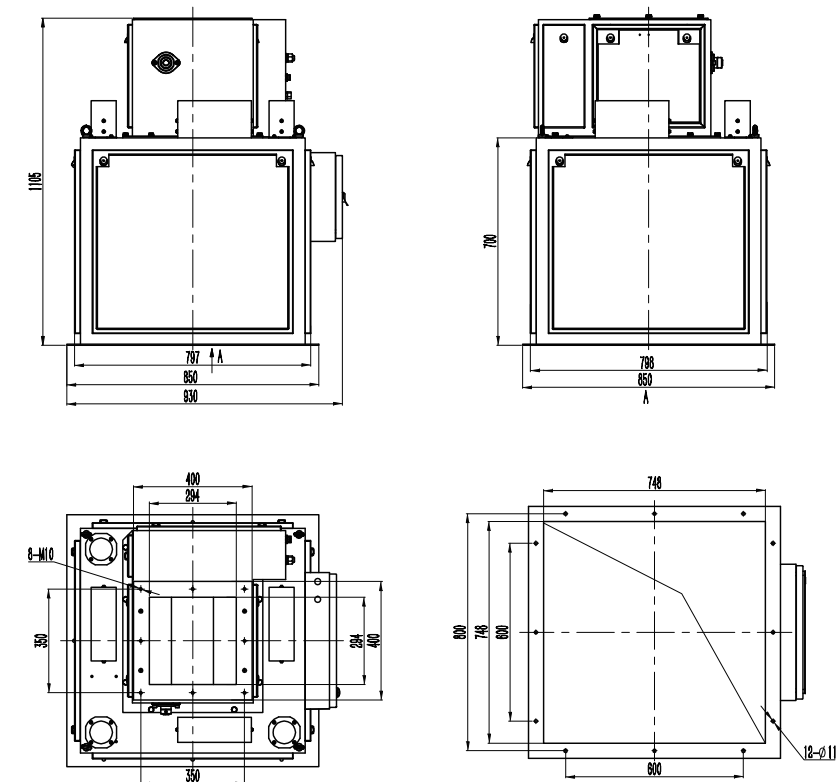
## Specification

Model	PaxGo AF-50K Pneumatic Version
Weighing range	25~50kg
Division	1g
Best Accuracy*	±25g
Speed *	≥1100pcs/h
Volume	86L
Feeding method	Pneumatic cylinder control
Material	SS304, carbon steel
I/O	8 output(5V), 8 input(24V)
Communication	RS485, Modbus TCP/IP
Pneumatic	0.4~0.6MPa
Power	Single Phase AC-220V ±10%, 50/60HZ
Working environment	0~40°C, 90%R.H condensation is not allowed

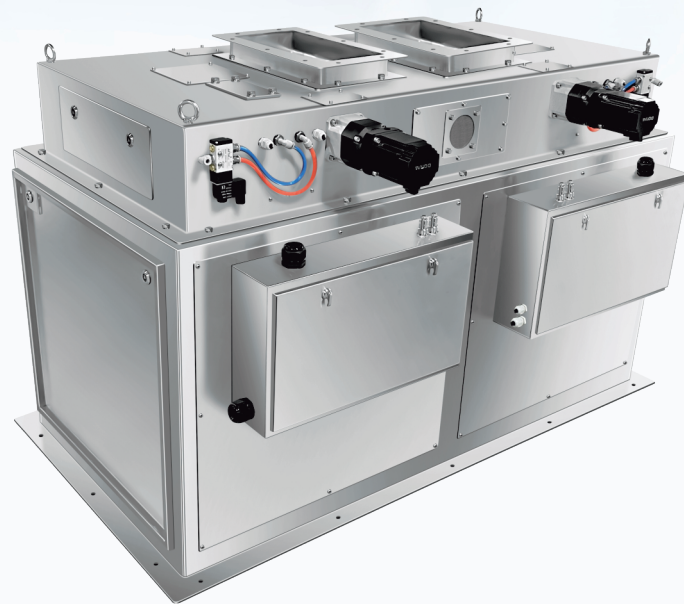
\* Normally, the diameter of the testing material 1-5mm.

## Structure & Dimension

Unit: mm



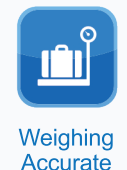
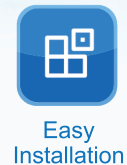
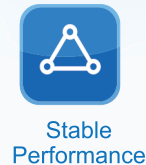
# DUPLEX PACKING FILLER AF-50K II



**10-50kg**  
Weighing range

**±20g**  
Accuracy

**1500** +Pcs/h  
Speed



## Features:

- **Granular material:** design for big bag packing machine for plastic particles, rice, sugar and other granular material;
- **Easy dismounting:** module design of measuring hopper for easy cleaning;
- **Parameter setting:** self-adjust function with target value set only;
- **Stable performance:** servo motor controls feeding process;
- **Weighing accurate:** weighing range is 10-50kg. Speed can reach 1500 pcs/h and best accuracy is ±20g.



## Optional:



User-friendly interface design,  
vivid display, easy to operate.

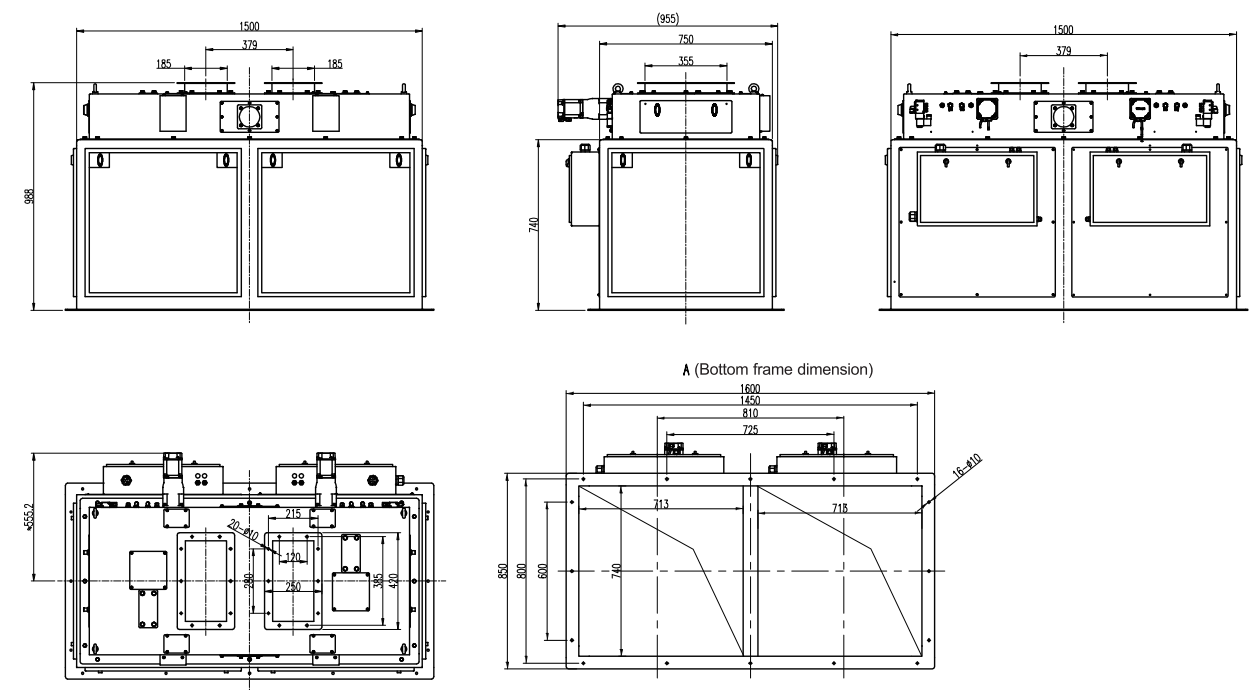
## Specification

Model	PaxGo AF-50KII
Weighing range	10~50Kg
Division	1g
Best Accuracy*	±20 g
Speed *	≥1500 pcs/h
Volume	86L×2
Feeding method	Feeding control by servo, pneumatic discharging
Material	SS304, carbon steel
I/O	8 output(5V), 8 input(24V)
Communication	RS485, Modbus TCP/IP
Pneumatic	0.4~0.6MPa
Power	Single Phase AC-220V ±10%, 50/60HZ
Working environment	0~40℃, 90%R.H condensation is not allowed

\* Normally, the diameter of the testing material 1-5mm.

## Structure & Dimension

Unit: mm





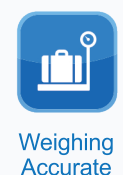
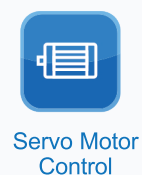
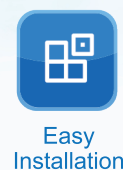
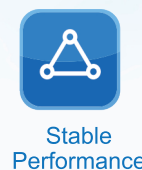
# GRANULE PACKING FILLER AF-25K



**5-25kg**  
Weighing range

**± 10g**  
Accuracy

**900** + Pcs/h  
Speed

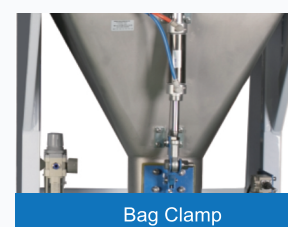


## Features:

- **Granular material:** design for plastic particle, granular fertilizer, feeds and other granular material.
- **Easy dismantling:** module design of measuring hopper for easy cleaning.
- **Parameter setting:** self-adjust function with target value set only
- **Stable performance:** servo motor controls feeding process
- **Weighing accurate:** weighing range is 5-25kg. Speed can reach 900 pcs/h and best accuracy is ±10g.



## Optional:



- SS304 stainless steel.



- User-friendly interface design, vivid display, easy to operate.

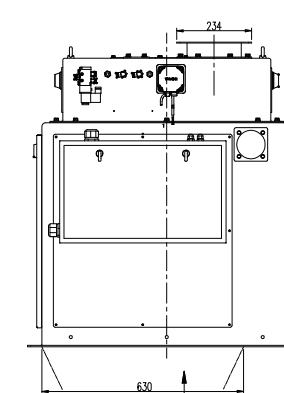
## Specification

Model	PaxGo AF-25K
Weighing range	5~25Kg
Division	1g
Best Accuracy*	±10 g
Speed *	900pcs/h
Volume	55L
Feeding method	Feeding control by servo, pneumatic discharging
Material	SS304, carbon steel
I/O	8 output(5V), 8 input(24V)
Communication	RS485, Modbus TCP/IP
Pneumatic	0.4~0.6MPa
Power	Single Phase AC-220V ±10%, 50/60HZ
Working environment	0~40°C, 90%R.H condensation is not allowed

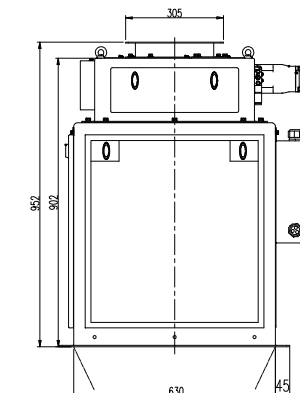
\* Normally, the diameter of the testing material 1-5mm

## Structure & Dimension

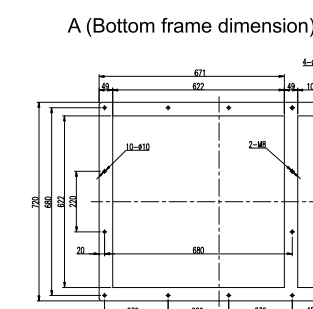
Unit: mm



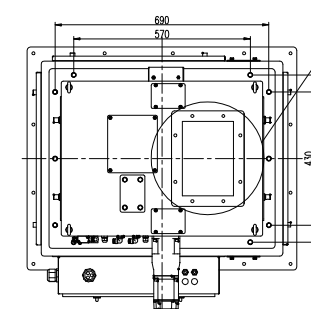
A (Bottom frame dimension)



B (Feeding port dimension)

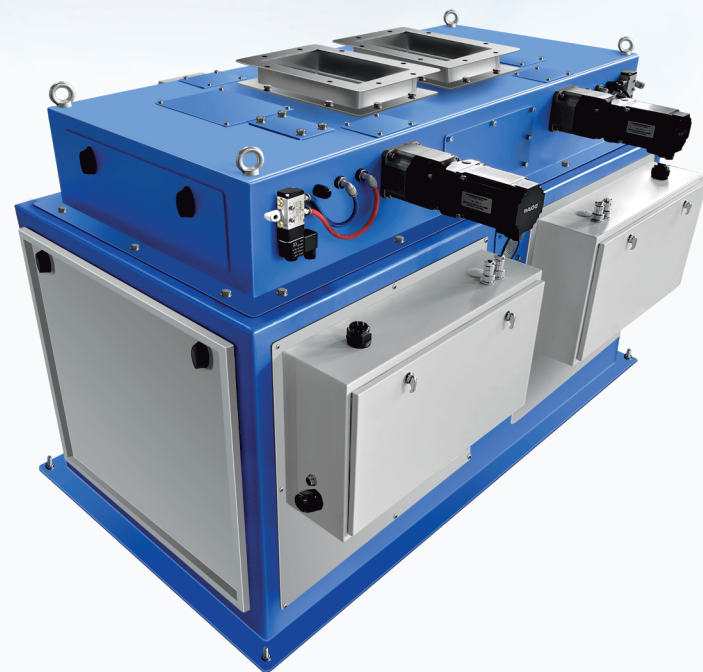


A (Bottom frame dimension)



B (Feeding port dimension)

# DUPLEX PACKING FILLER AF-25K II



**5-25kg**  
Weighing range

**±10g**  
Accuracy

**1600** + Pcs/h  
Speed



Stable  
Performance



Easy  
Installation



Servo Motor  
Control



Weighing  
Accurate

## Features:

- **Granular material:** design for plastic particle, granular fertilizer, feeds and other granular material.
- **Easy dismounting:** module design of measuring hopper for easy cleaning.
- **Parameter setting:** self-adjust function with target value set only
- **Stable performance:** servo motor controls feeding process
- **Weighing accurate:** weighing range is 5-25kg. Speed can reach 1600 pcs/h and best accuracy is ±10g.



## Optional:



Bag Clamp

- SS304 stainless steel.



10-inch touch screen

- User-friendly interface design, vivid display, easy to operate.

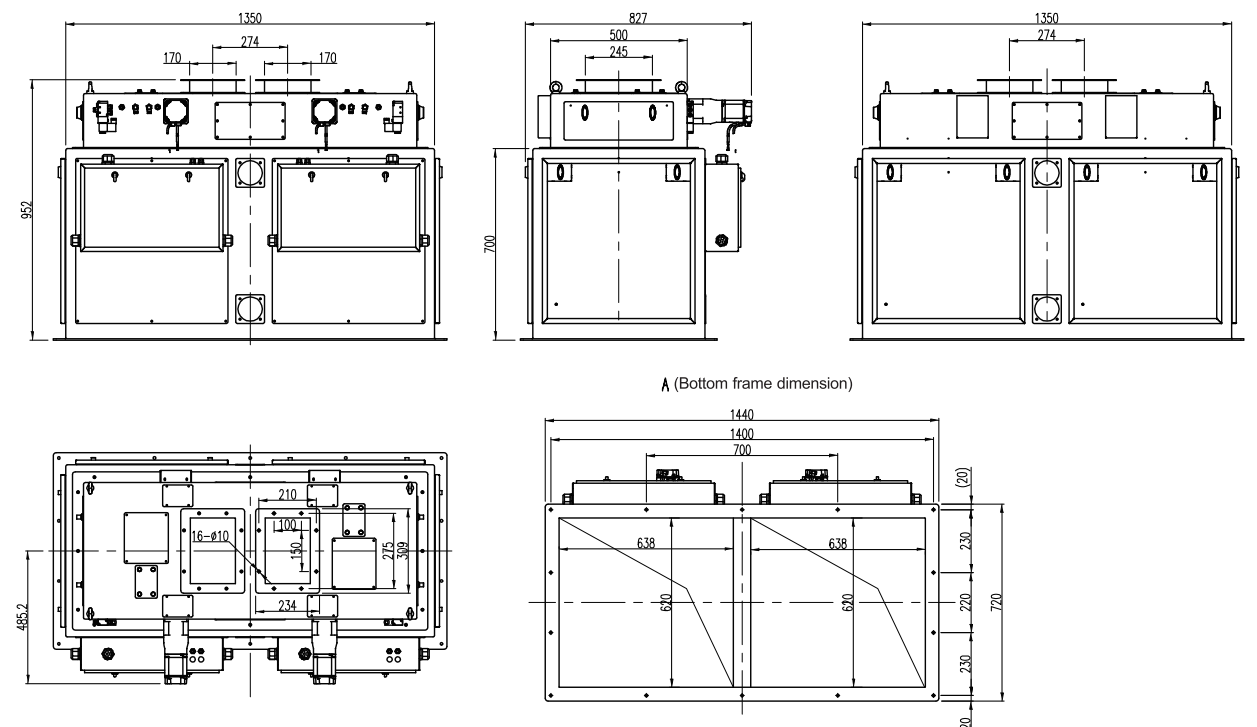
## Specification

Model	PaxGo AF-25KII
Weighing range	5~25Kg
Division	1g
Best Accuracy*	±10 g
Speed *	≥1600 pcs/h
Volume	55L×2
Feeding method	Feeding control by servo, pneumatic discharging
Material	SS304, carbon steel
I/O	8 output(5V), 8 input(24V)
Communication	RS485, Modbus TCP/IP
Pneumatic	0.4~0.6MPa
Power	Single Phase AC-220V ±10%, 50/60HZ
Working environment	0~40°C, 90%R.H condensation is not allowed

\* Normally, the diameter of the testing material 1-5mm

## Structure & Dimension

Unit: mm





# GRANULE PACKING FILLER AF-10K



**0.5-10kg**  
Weighing range

**±3g**  
Accuracy

**900** +Pcs/h  
Speed



Stable  
Performance



Easy  
Installation



Servo Motor  
Control



Weighing  
Accurate

## Features:

- **Granular material**: design for rice, millet, beans and other granular material;
- **Easy dismounting**: module design of measuring hopper for easy cleaning;
- **Parameter setting**: self-adjust function with target value set only;
- **Stable performance**: servo motor controls feeding process;
- **Weighing accurate**: weighing range is 0.5-10kg. Speed can reach 900pcs/h and best accuracy is ±3g.

## Optional:

User-friendly interface design,  
vivid display, easy to operate.



10-inch touch screen



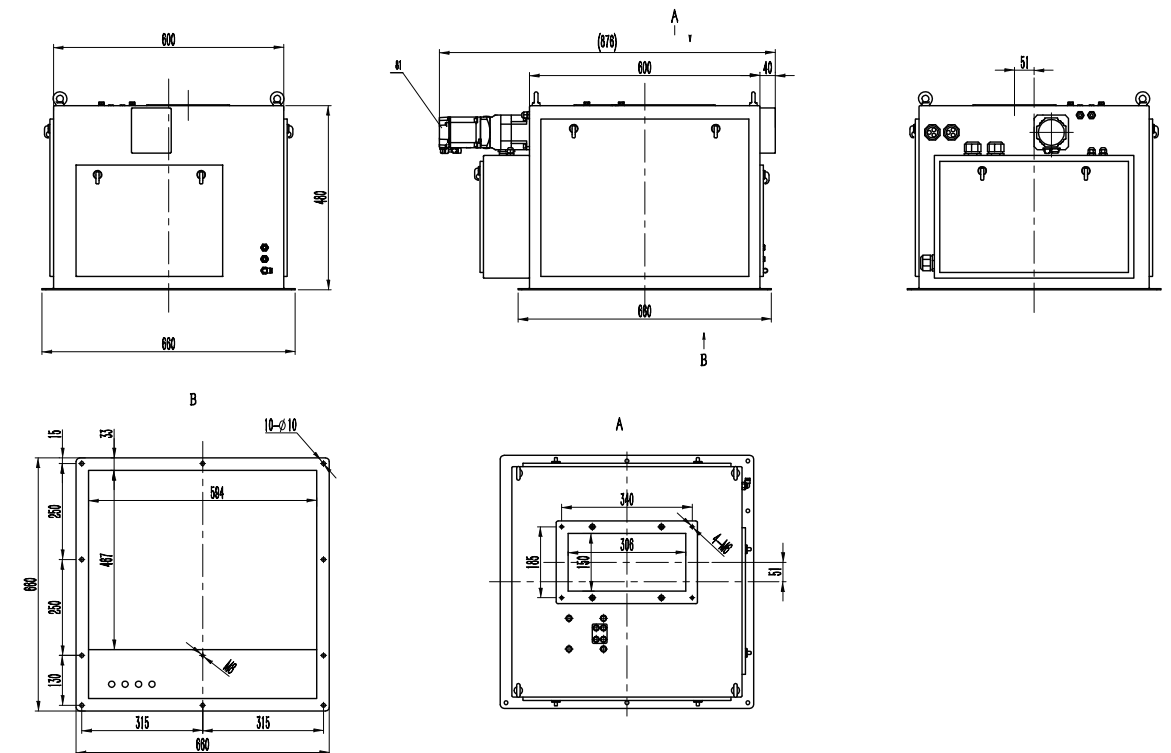
## Specification

Model	PaxGo AF-10K
Weighing range	0.5~10Kg
Division	1g
Best Accuracy*	±3 g
Speed *	900pcs/h
Volume	15L
Feeding method	Servo motor + feeding vibrator, pneumatic discharging
Material	SS304, carbon steel
I/O	8 output(5V), 8 input(24V)
Communication	RS485, Modbus TCP/IP
Pneumatic	0.4~0.6MPa
Power	Single Phase AC-220V ±10%, 50/60HZ
Working environment	0~40°C, 90%R.H condensation is not allowed

\* Normally, the diameter of the testing material 1-5mm

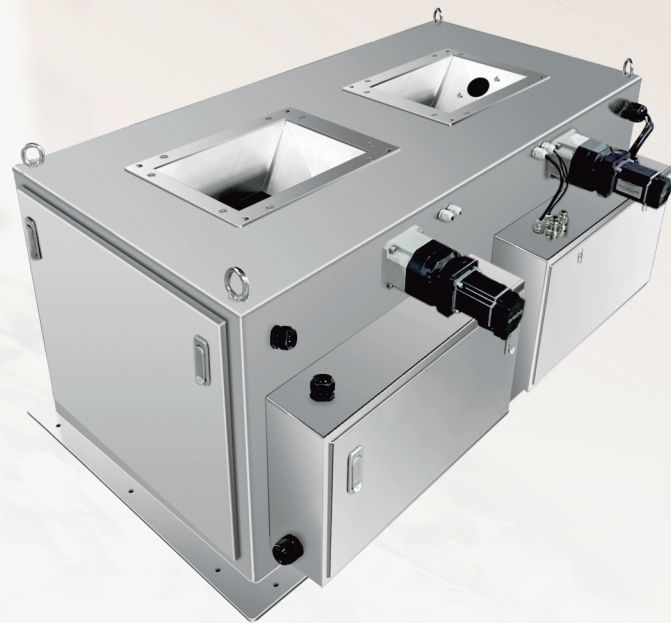
## Structure & Dimension

Unit: mm





# DUPLEX PACKING FILLER AF-10K II



**0.5-10kg**  
Weighing range

**±3g**  
Accuracy

**1600** + Pcs/h  
Speed



Stable  
Performance



Easy  
Installation



Servo Motor  
Control



Weighing  
Accurate

## Features:

- **Granular material:** design for rice, millet, beans and other granular material;
- **Easy dismounting:** module design of measuring hopper for easy cleaning;
- **Parameter setting:** self-adjust function with target value set only;
- **Stable performance:** servo motor controls feeding process;
- **Weighing accurate:** weighing range is 0.5-10kg. Speed can reach 1600pcs/h and best accuracy is ±3g.

## Optional:

User-friendly interface design,  
vivid display, easy to operate.



10-inch touch screen



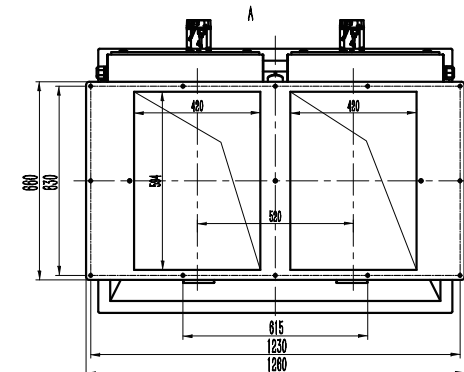
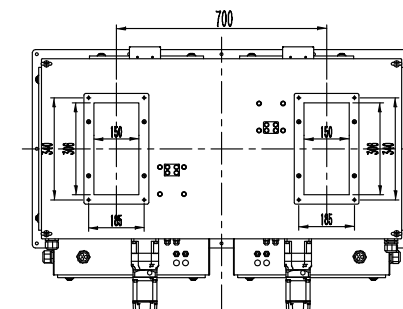
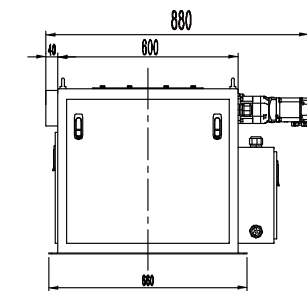
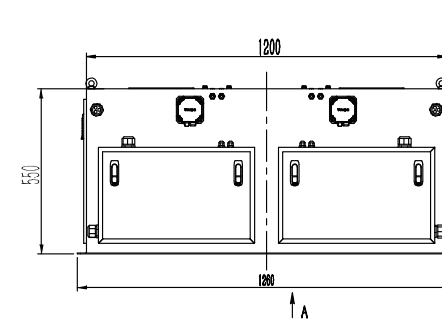
## Specification

Model	PaxGo AF-10KII
Weighing range	0.5~10Kg
Division	1g
Best Accuracy*	±3 g
Speed *	≥1600 pcs/h
Volume	15L×2
Feeding method	Servo motor + feeding vibrator, pneumatic discharging
Material	SS304, carbon steel
I/O	8 output(5V), 8 input(24V)
Communication	RS485, Modbus TCP/IP
Pneumatic	0.4~0.6MPa
Power	Single Phase AC-220V ±10%, 50/60HZ
Working environment	0~40°C, 90%R.H condensation is not allowed

\* Normally, the diameter of the testing material 1-5mm

## Structure & Dimension

Unit: mm





# GRANULE PACKING FILLER AF-05K



0.25-5kg

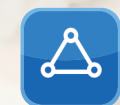
Weighing range

±2g

Accuracy

1000+ Pcs/h

Speed



Stable  
Performance



Easy  
Installation



Servo Motor  
Control



Weighing  
Accurate

## Features:

- **Granular material**: design for rice, millet, beans and other granular material;
- **Easy dismounting**: module design of measuring hopper for easy cleaning;
- **Parameter setting**: self-adjust function with target value set only;
- **Stable performance**: servo motor controls feeding process;
- **Weighing accurate**: weighing range is 0.25-5kg. Speed can reach 1000 pcs/h and best accuracy is ±2g.



- User-friendly interface design, vivid display, easy to operate.



## Specification

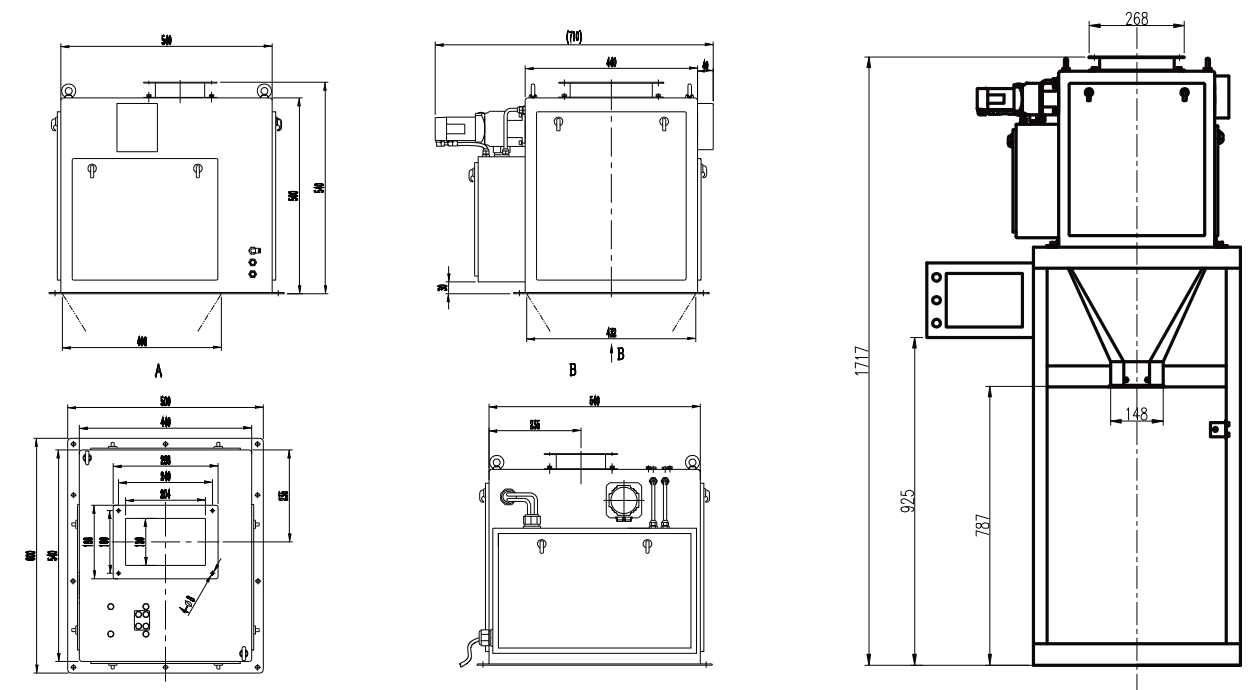
Model	PaxGo AF-05K
Weighing range	0.25~5Kg
Division	1g
Best Accuracy*	±2 g
Speed *	1000pcs/h
Volume	11L
Feeding method	Servo motor+feeding vibrator, pneumatic discharging
Material	SS304, carbon steel
I/O	8 output(5V), 8 input(24V)
Communication	RS485, Modbus TCP/IP
Pneumatic	0.4~0.6MPa
Power	Single Phase AC-220V ±10%, 50/60HZ
Working environment	0~40°C, 90%R.H condensation is not allowed

\* Testing material: rice, speed: 1000pcs/h, accuracy: ±2 g

\* Normally, the diameter of the testing material 1-5mm

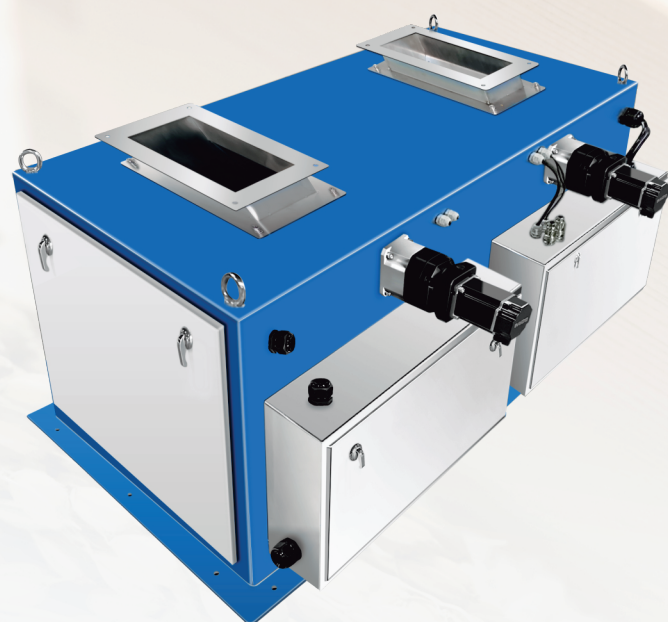
## Structure & Dimension

Unit: mm





# DUPLEX PACKING FILLER AF-05K II



0.25-5<sub>kg</sub>

Weighing range

 $\pm 2g$ 

## Accuracy

1600<sub>+Pcs/h</sub>

Speed



## Stable Performance



## Easy Installation



## Servo Motor Control



## Weighing Accurate

## Features:

- **Granular material:** design for rice, millet, beans and other granular material;
- **Easy dismounting:** module design of measuring hopper for easy cleaning;
- **Parameter setting:** self-adjust function with target value set only;
- **Stable performance:** servo motor controls feeding process;
- **Weighing accurate:** weighing range is 0.25-5kg. Speed can reach 1600 pcs/h and best accuracy is  $\pm 2g$ .



## Specification

Model	PaxGo AF-05KII
Weighing range	0.25~5Kg
Division	1g
Best Accuracy*	±2 g
Speed *	≥1600 pcs/h
Volume	11L×2
Feeding method	Servo motor+feeding vibrator, pneumatic discharging
Material	SS304, carbon steel
I/O	8 output(5V), 8 input(24V)
Communication	RS485, Modbus TCP/IP
Pneumatic	0.4~0.6MPa
Power	Single Phase AC-220V ±10%, 50/60HZ
Working environment	0~40℃, 90%R.H condensation is not allowed

\* Testing material: rice, speed: 1600pcs/h, accuracy:  $\pm 2$  g

\* Normally, the diameter of the testing material 1-5mm

## Structure & Dimension

Unit: mm

