

DYNAMIC CHECKWEIGHER CW-1.2K

- For pouches, bags, and soft-sided containers, bottles;
- S304 stainless steel frame is standard;
- 10-inch touch screen, can store over 1 million transaction, data export through USB;

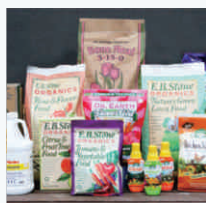
Multiple industrial application



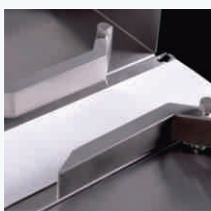
Food



Grain



Chemical



10-1200_g

Weighing range



±0.5_g

Accuracy



200_{+Pcs/min}

Speed



High Cabinet



Low Cabinet

Standard specification

| | |
|-----------------------------|---|
| Model | CW-1.2K |
| Weighing range | 10~1200g |
| Scale division | 0.1g |
| Best Accuracy* | ± 0.5g |
| Highest Weighing speed * | 200 pcs/min |
| Belt speed | 5~50 m/min |
| Belt size | 400×250mm |
| Weighing platform Height ** | 750±50mm |
| Belt material | PU (white) |
| Structure of the material | SS304 stainless steel |
| Alarm light | 3-color signal light (Red, yellow, green) , Optional buzzer |
| Display size | 10-inch color touch screen |
| Rejector lineup | Options: swing type, push type , flipped type rejector |
| Power | Single Phase AC-220V ±10%, 50/60HZ |
| operating temperature | 0~40°C |
| IP grade | IP54,IP65 Optional |

* Depend on the weight, size, and material of test object. Test accuracy: 1g at 120pcs/min

Dimensions

Unit:mm

