

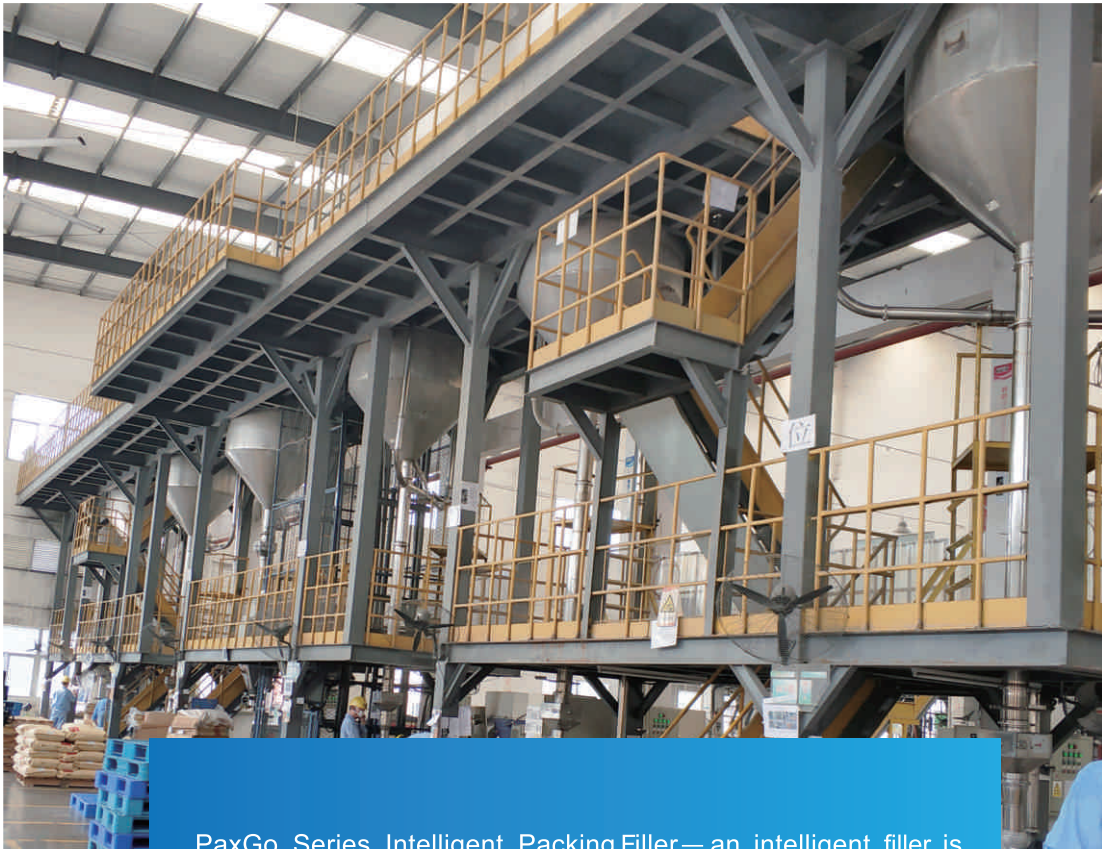
PaxGo Series

Intelligent Packing Filler



Making the World Measurable

Linking Your Smart Life



PaxGo Series Intelligent Packing Filler— an intelligent filler is widely used for granule packing.

PaxGo Series

Intelligent Packing Filler



Easy
Operation



Automated
Control



Accurate
Weighing

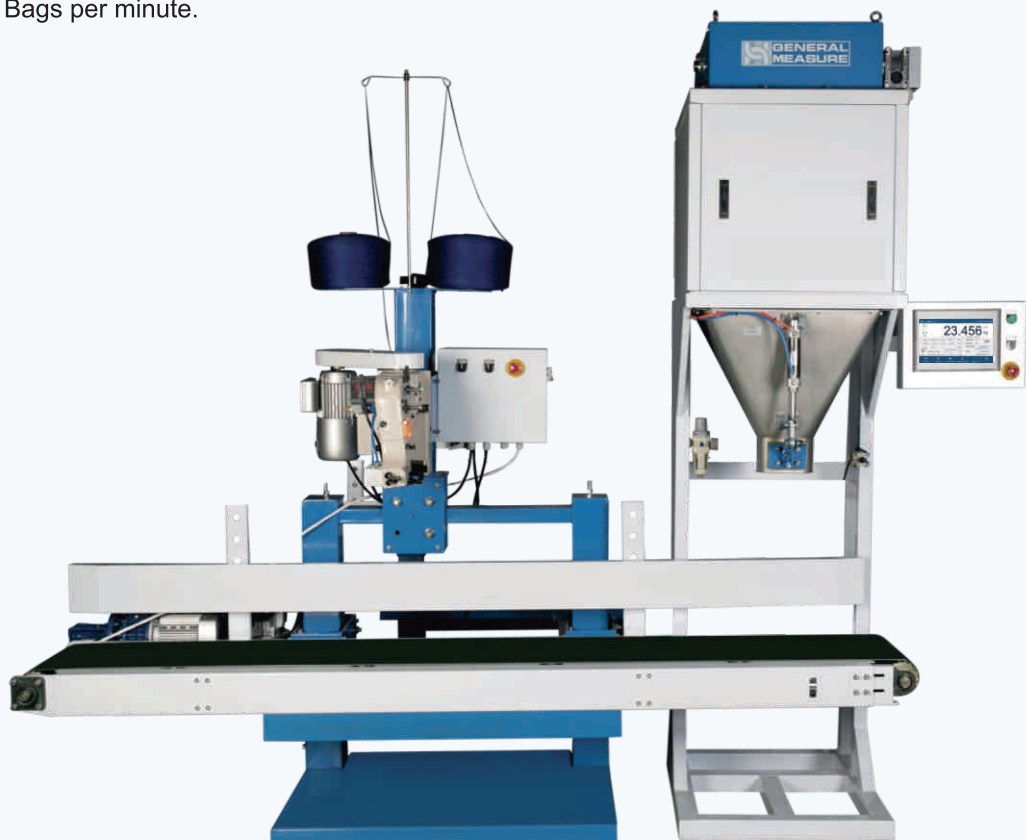


High
Efficiency

PaxGo is an automatic weigh filler its self-optimizing controls can be precisely configured to your specific material flow, speed and accuracy requirements.

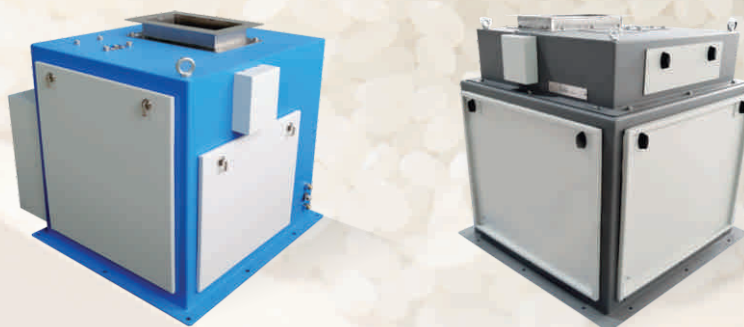
Features:

- Specially designed for granular products like Rice, Pulses, Plastic Granules, Animal Feed, Maize, Soybeans, Seeds, Sugar and other granular material;
- Equipped with self optimizing intelligent program for high speed operation;
- Best accuracy $\pm 2g$;
- Models available in 0.25-5kg, 0.5-10kg, 5-25kg, 10-50kg;
- Speeds up to 16 Bags per minute.



Industrial Design

Special design for industrial application, high speed and accuracy.



User-friendly Design

- The food contacting materials are all made of S304 stainless steel and can be used for food packaging;
- International premium brand components ensure the product quality.



Communication interface

- Dual serial port RS232/RS485;
- Standard Ethernet port;
- Modbus TCP/IP;
- 4G/5G Communication (Optional).



Module Design

Easy installation and dismantling for washing down.



Servo Motor

For feeding control achieves intelligent auto adjustment fast and accurately.



USB

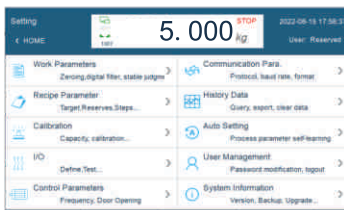
Embedded USB for exporting data conveniently and system upgrading.





User-friendly design

10-inch color user friendly touch screen and graphical design interface. Simple operation without professional training.



- Parameter interface optimization and upgrade.



- Observing data changes when setting parameters, which is simultaneous and intuitive.

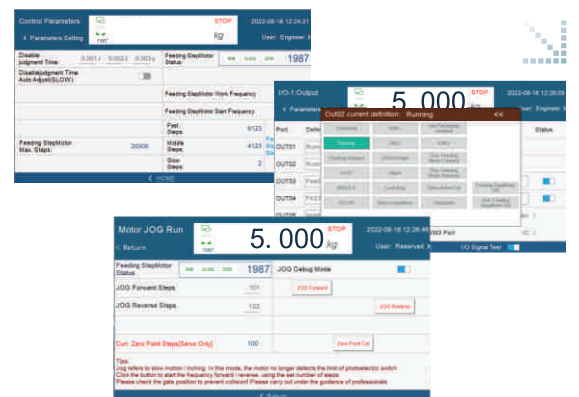
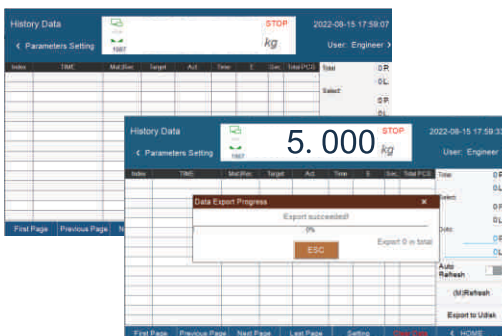


- Calibration according to different materials with step hints to make the field calibration more convenient.



Well-organized data management

- All definitions of each port can be intuitively selected.



- Motor parameters: an interface can simultaneously display the motor status and parameters which is easy to debug.

GRANULE PACKING FILLER AF-50K



10-50kg

Weighing range



Stable
Performance



Easy
Installation

±20g

Accuracy



Servo Motor
Control



Weighing
Accurate

800+Pcs/h

Speed



Features:

- **Granular material:** design for big bag packing machine for plastic particles, rice, sugar and other granular material;
- **Easy dismounting:** module design of measuring hopper for easy cleaning;
- **Parameter setting:** self-adjust function with target value set only;
- **Stable performance:** servo motor controls feeding process;
- **Weighing accurate:** weighing range is 10-50kg. Speed can reach 800pcs/h and best accuracy is ±20g.

Optional:

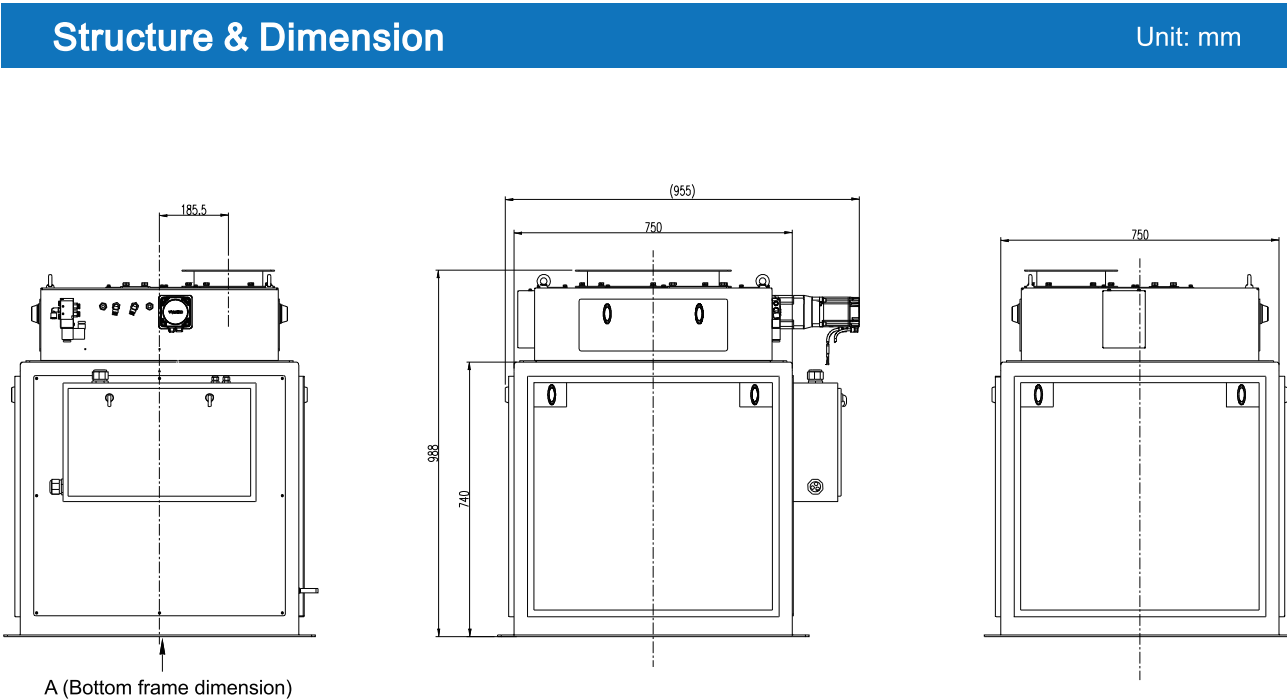


User-friendly interface design,
vivid display, easy to operate.

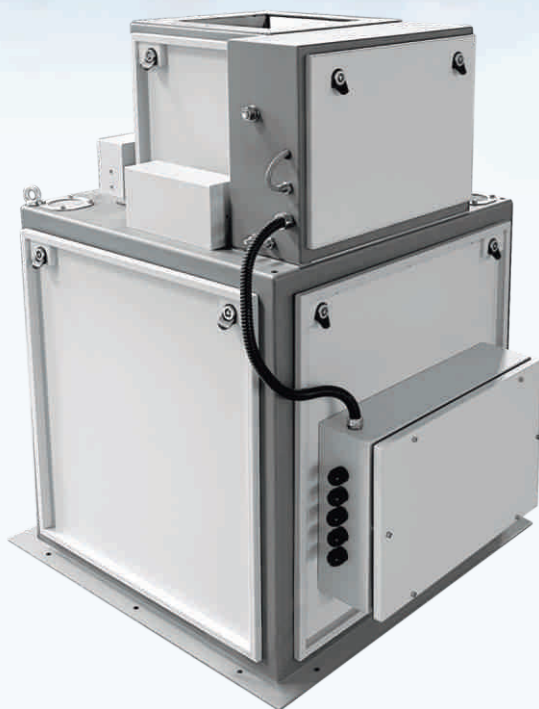


Specification	
Model	PaxGo AF-50K
Weighing range	10~50Kg
Division	1g
Best Accuracy*	±20 g
Speed *	Max.800pcs/h
Volume	86L
Feeding method	Feeding control by servo, pneumatic discharging
Material	SS304, carbon steel
I/O	8 output(5V), 8 input(24V)
Communication	RS485, Modbus TCP/IP
Pneumatic	0.4~0.6MPa
Power	Single Phase AC-220V ±10%, 50/60HZ
Working environment	0~40°C, 90%R.H condensation is not allowed

* Normally, the diameter of the testing material 1-5mm.



PNEUMATIC VERSION AF-50K



25-50_{kg}

Weighing range

±25_g

Accuracy

1100_{+ Pcs/h}

Speed



Stable
Performance



Easy
Installation



Pneumatic
Cylinder Control



High Speed
Weighing

Features:

- **Granular materials:** design for big bag packing machine for plastic particles, rice, sugar and other granular material;
- **Easy installation:** module design, easy for installation and dismount;
- **Convenient setup:** self-adjust function with target value set only;
- **High-speed performance:** pneumatic cylinder control, speed can reach above 1100pcs/h;
- **Weighing accurate:** weighing range is 25~50kg, best accuracy is ±25g.

Optional:



10-inch touch screen

User-friendly interface design,
vivid display, easy to operate.



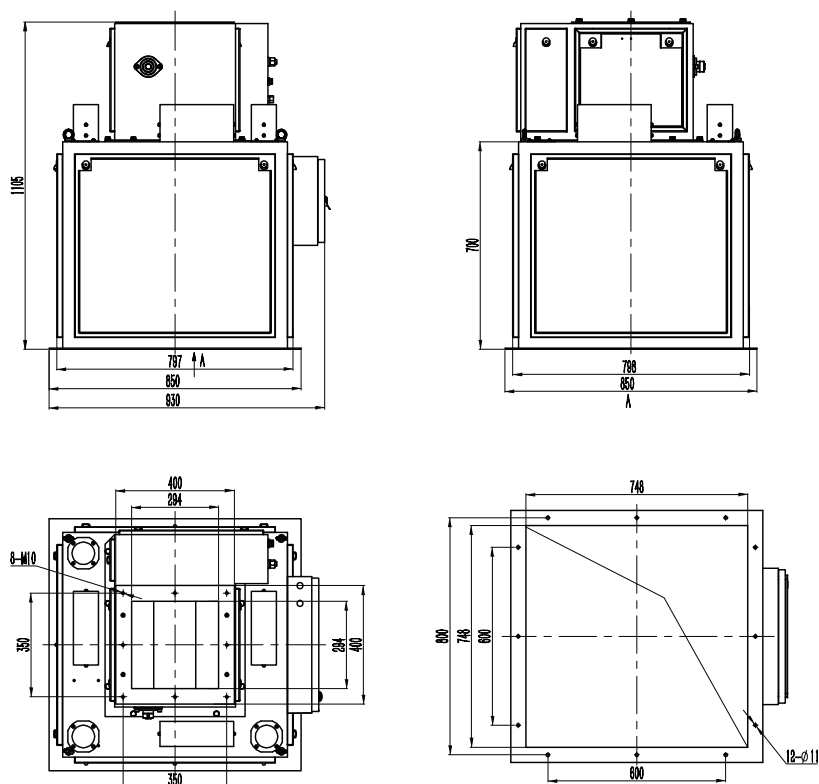
Specification

Model	PaxGo AF-50K Pneumatic Version
Weighing range	25~50kg
Division	1g
Best Accuracy*	±25g
Speed *	≥1100pcs/h
Volume	86L
Feeding method	Pneumatic cylinder control
Material	SS304, carbon steel
I/O	8 output(5V), 8 input(24V)
Communication	RS485, Modbus TCP/IP
Pneumatic	0.4~0.6MPa
Power	Single Phase AC-220V ±10%, 50/60HZ
Working environment	0~40°C, 90%R.H condensation is not allowed

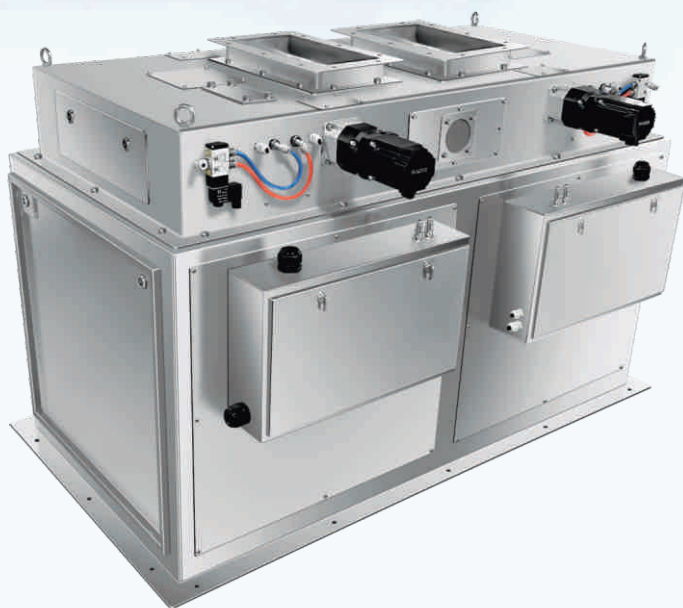
* Normally, the diameter of the testing material 1-5mm.

Structure & Dimension

Unit: mm



DUPLEX PACKING FILLER AF-50K II



10-50 kg

Weighing range



Stable
Performance



Easy
Installation

±20g

Accuracy



Servo Motor
Control



Weighing
Accurate

1500 +Pcs/h

Speed

Features:

- **Granular material:** design for big bag packing machine for plastic particles, rice, sugar and other granular material;
- **Easy dismounting:** module design of measuring hopper for easy cleaning;
- **Parameter setting:** self-adjust function with target value set only;
- **Stable performance:** servo motor controls feeding process;
- **Weighing accurate:** weighing range is 10-50kg. Speed can reach 1500 pcs/h and best accuracy is ±20g.

Optional:



User-friendly interface design,
vivid display, easy to operate.



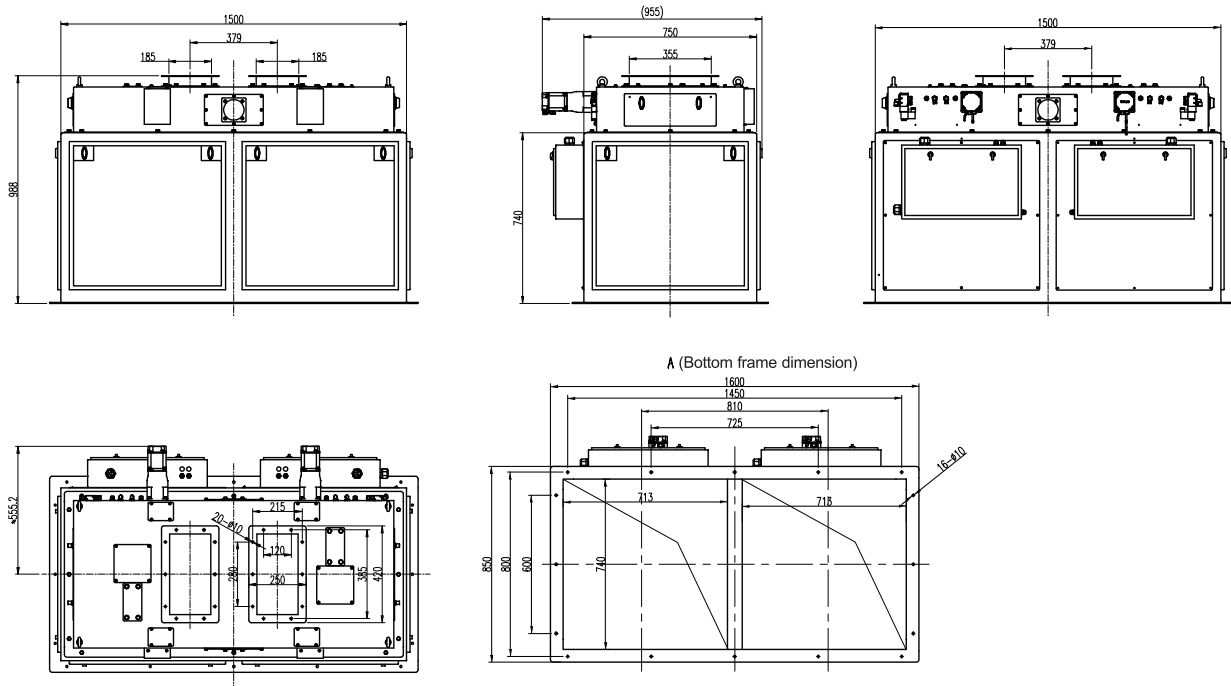
Specification

Model	PaxGo AF-50KII
Weighing range	10~50Kg
Division	1g
Best Accuracy*	±20 g
Speed *	≥1500 pcs/h
Volume	86L×2
Feeding method	Feeding control by servo, pneumatic discharging
Material	SS304, carbon steel
I/O	8 output(5V), 8 input(24V)
Communication	RS485, Modbus TCP/IP
Pneumatic	0.4~0.6MPa
Power	Single Phase AC-220V ±10%, 50/60HZ
Working environment	0~40°C, 90%R.H condensation is not allowed

* Normally, the diameter of the testing material 1-5mm.

Structure & Dimension

Unit: mm



GRANULE PACKING FILLER AF-25K



5-25kg

Weighing range

± 10g

Accuracy

900⁺ Pcs/h

Speed



Stable
Performance



Easy
Installation



Servo Motor
Control



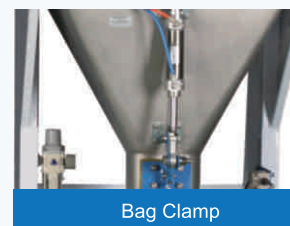
Weighing
Accurate

Features:

- **Granular material:** design for plastic particle, granular fertilizer, feeds and other granular material.
- **Easy dismounting:** module design of measuring hopper for easy cleaning.
- **Parameter setting:** self-adjust function with target value set only
- **Stable performance:** servo motor controls feeding process
- **Weighing accurate:** weighing range is 5-25kg. Speed can reach 900 pcs/h and best accuracy is ±10g.



Optional:



Bag Clamp

- SS304 stainless steel.



10-inch touch screen

- User-friendly interface design, vivid display, easy to operate.

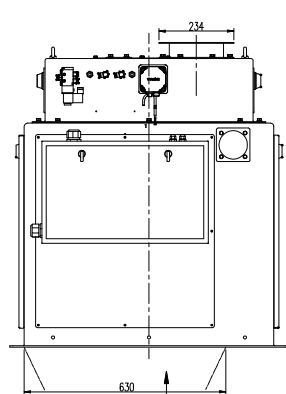
Specification

Model	PaxGo AF-25K
Weighing range	5~25Kg
Division	1g
Best Accuracy*	±10 g
Speed *	900pcs/h
Volume	55L
Feeding method	Feeding control by servo, pneumatic discharging
Material	SS304, carbon steel
I/O	8 output(5V), 8 input(24V)
Communication	RS485, Modbus TCP/IP
Pneumatic	0.4~0.6MPa
Power	Single Phase AC-220V ±10%, 50/60HZ
Working environment	0~40°C, 90%R.H condensation is not allowed

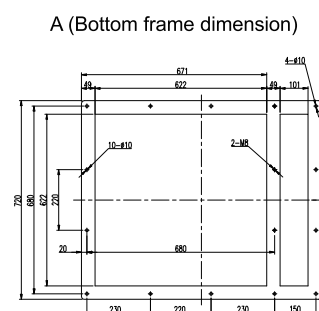
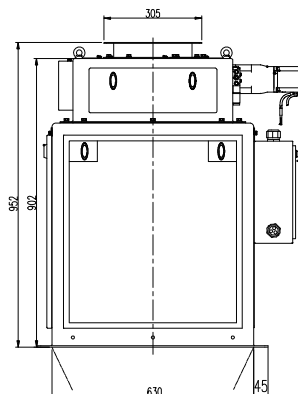
* Normally, the diameter of the testing material 1-5mm

Structure & Dimension

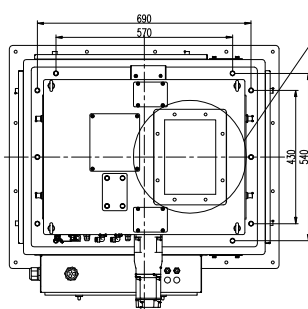
Unit: mm



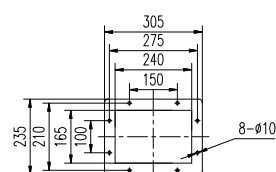
A (Bottom frame dimension)



A (Bottom frame dimension)

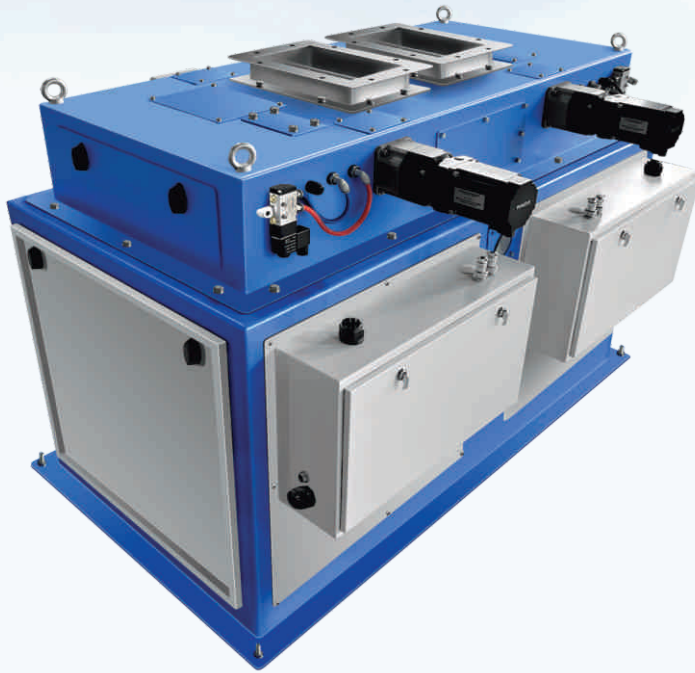


B (Feeding port dimension)



B (Feeding port dimension)

DUPLEX PACKING FILLER AF-25K II



5-25kg

Weighing range

±10g

Accuracy

1600 + Pcs/h

Speed



Stable
Performance



Easy
Installation



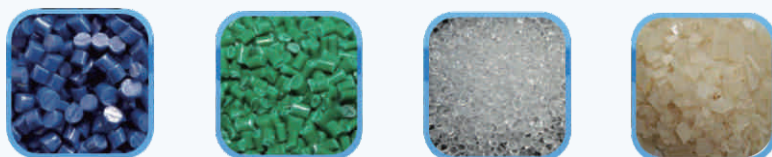
Servo Motor
Control



Weighing
Accurate

Features:

- **Granular material:** design for plastic particle, granular fertilizer, feeds and other granular material.
- **Easy dismounting:** module design of measuring hopper for easy cleaning.
- **Parameter setting:** self-adjust function with target value set only
- **Stable performance:** servo motor controls feeding process
- **Weighing accurate:** weighing range is 5-25kg. Speed can reach 1600 pcs/h and best accuracy is ±10g.



Optional:



Bag Clamp

- SS304 stainless steel.



10-inch touch screen

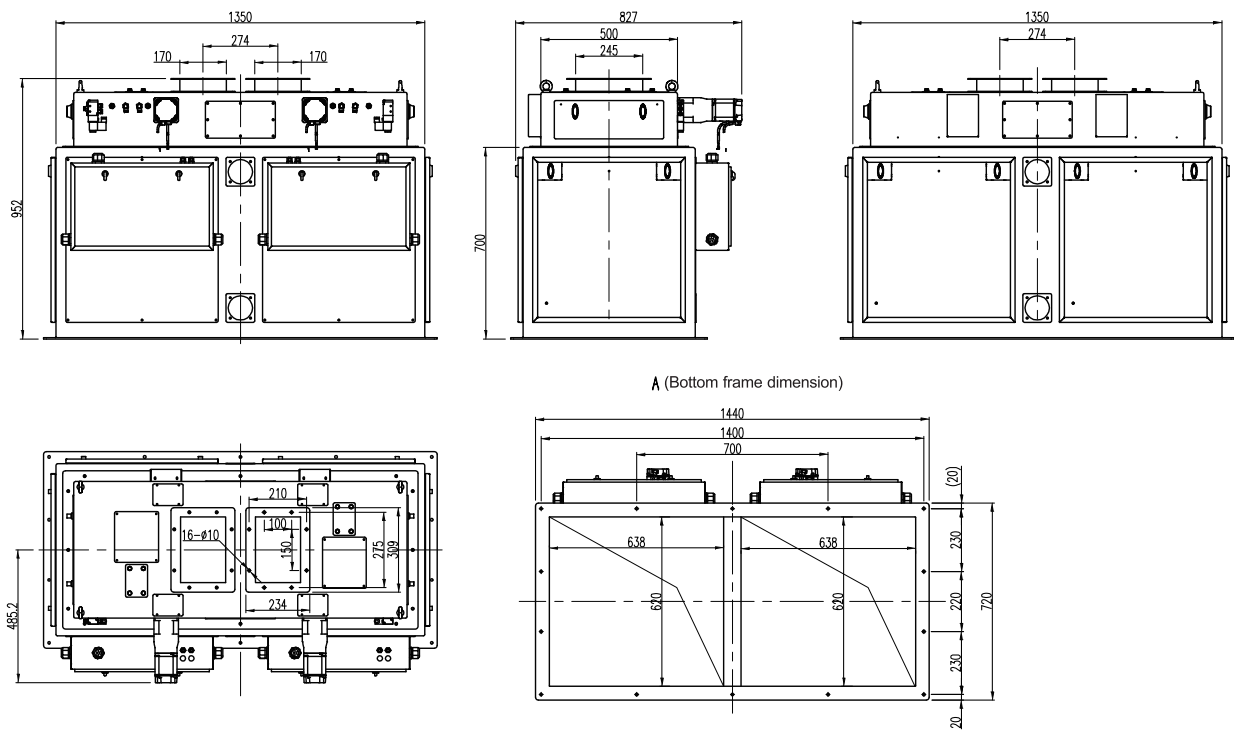
- User-friendly interface design, vivid display, easy to operate.

Specification	
Model	PaxGo AF-25KII
Weighing range	5~25Kg
Division	1g
Best Accuracy*	±10 g
Speed *	≥1600 pcs/h
Volume	55L×2
Feeding method	Feeding control by servo, pneumatic discharging
Material	SS304, carbon steel
I/O	8 output(5V), 8 input(24V)
Communication	RS485, Modbus TCP/IP
Pneumatic	0.4~0.6MPa
Power	Single Phase AC-220V ±10%, 50/60HZ
Working environment	0~40℃, 90%R.H condensation is not allowed

* Normally, the diameter of the testing material 1-5mm

Structure & Dimension

Unit: mm



GRANULE PACKING FILLER AF-10K



0.5-10kg

Weighing range



Stable
Performance



Easy
Installation

±3g

Accuracy



Servo Motor
Control



Weighing
Accurate

900 + Pcs/h

Speed

Features:

- **Granular material**: design for rice, millet, beans and other granular material;
- **Easy dismounting**: module design of measuring hopper for easy cleaning;
- **Parameter setting**: self-adjust function with target value set only;
- **Stable performance**: servo motor controls feeding process;
- **Weighing accurate**: weighing range is 0.5-10kg. Speed can reach 900pcs/h and best accuracy is ±3g.

Optional:

User-friendly interface design, vivid display, easy to operate.



10-inch touch screen



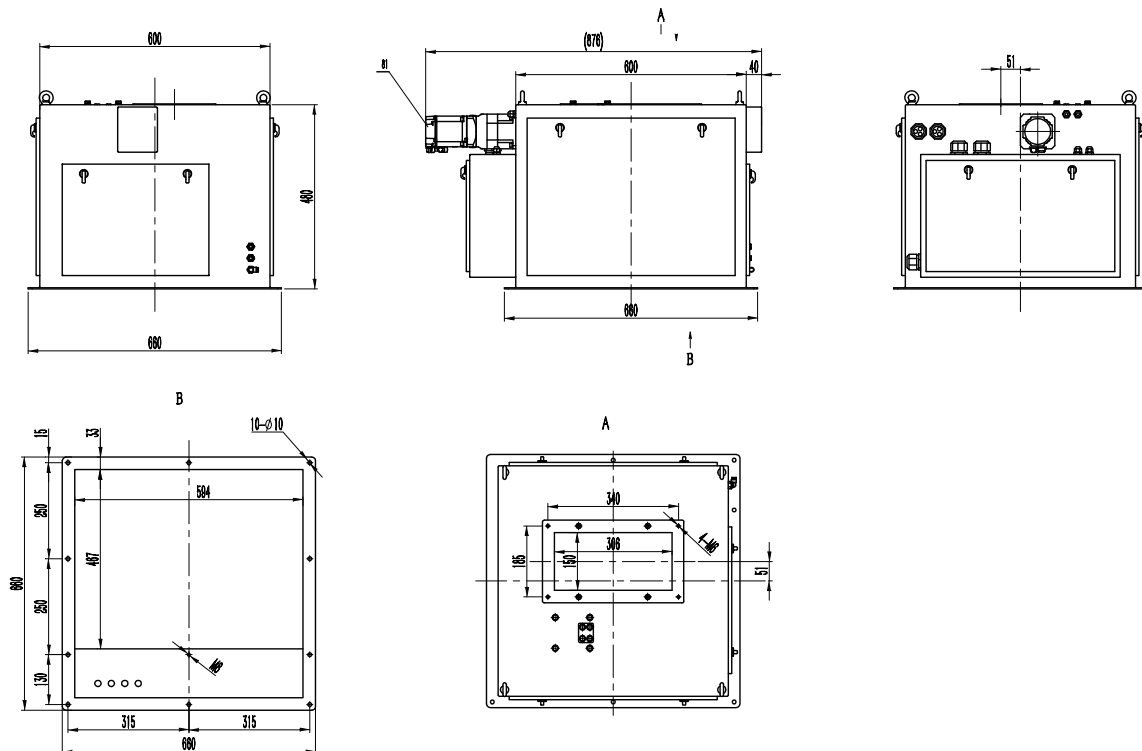
Specification

Model	PaxGo AF-10K
Weighing range	0.5~10Kg
Division	1g
Best Accuracy*	±3 g
Speed *	900pcs/h
Volume	15L
Feeding method	Servo motor + feeding vibrator, pneumatic discharging
Material	SS304, carbon steel
I/O	8 output(5V), 8 input(24V)
Communication	RS485, Modbus TCP/IP
Pneumatic	0.4~0.6MPa
Power	Single Phase AC-220V ±10%, 50/60HZ
Working environment	0~40°C, 90%R.H condensation is not allowed

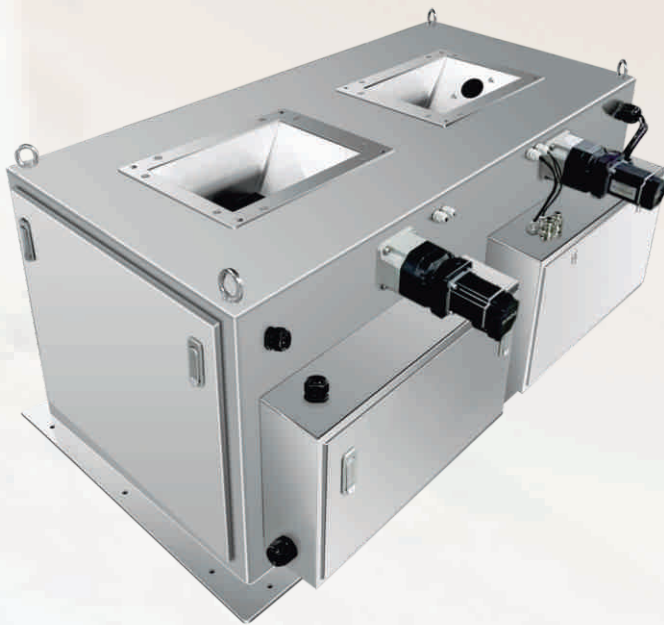
* Normally, the diameter of the testing material 1-5mm

Structure & Dimension

Unit: mm



DUPLEX PACKING FILLER AF-10K II



0.5-10kg

Weighing range



Stable
Performance



Easy
Installation

±3g

Accuracy



Servo Motor
Control



Weighing
Accurate

1600 +Pcs/h

Speed

Features:

- **Granular material:** design for rice, millet, beans and other granular material;
- **Easy dismounting:** module design of measuring hopper for easy cleaning;
- **Parameter setting:** self-adjust function with target value set only;
- **Stable performance:** servo motor controls feeding process;
- **Weighing accurate:** weighing range is 0.5-10kg. Speed can reach 1600pcs/h and best accuracy is ±3g.

Optional:

User-friendly interface design, vivid display, easy to operate.



10-inch touch screen



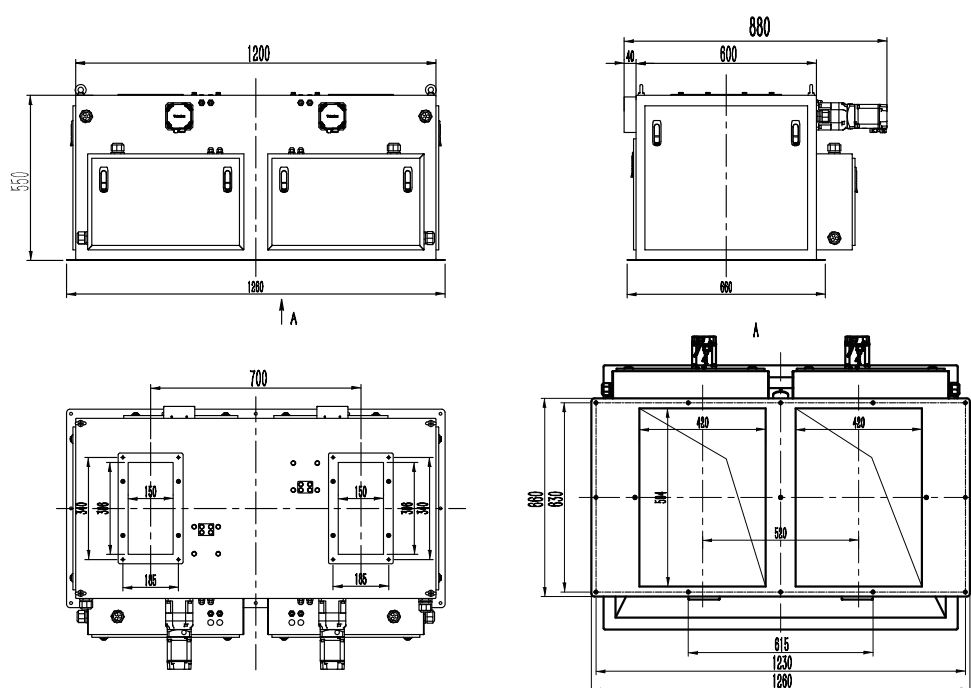
Specification

Model	PaxGo AF-10KII
Weighing range	0.5~10Kg
Division	1g
Best Accuracy*	±3 g
Speed *	≥1600 pcs/h
Volume	15L×2
Feeding method	Servo motor + feeding vibrator, pneumatic discharging
Material	SS304, carbon steel
I/O	8 output(5V), 8 input(24V)
Communication	RS485, Modbus TCP/IP
Pneumatic	0.4~0.6MPa
Power	Single Phase AC-220V ±10%, 50/60HZ
Working environment	0~40°C, 90%R.H condensation is not allowed

* Normally, the diameter of the testing material 1-5mm

Structure & Dimension

Unit: mm



GRANULE PACKING FILLER AF-05K



0.25-5kg

Weighing range



Stable
Performance



Easy
Installation

±2g

Accuracy



Servo Motor
Control



Weighing
Accurate

1000+ Pcs/h

Speed

Features:

- **Granular material:** design for rice, millet, beans and other granular material;
- **Easy dismounting:** module design of measuring hopper for easy cleaning;
- **Parameter setting:** self-adjust function with target value set only;
- **Stable performance:** servo motor controls feeding process;
- **Weighing accurate:** weighing range is 0.25-5kg. Speed can reach 1000 pcs/h and best accuracy is ±2g.



- User-friendly interface design, vivid display, easy to operate.



Specification

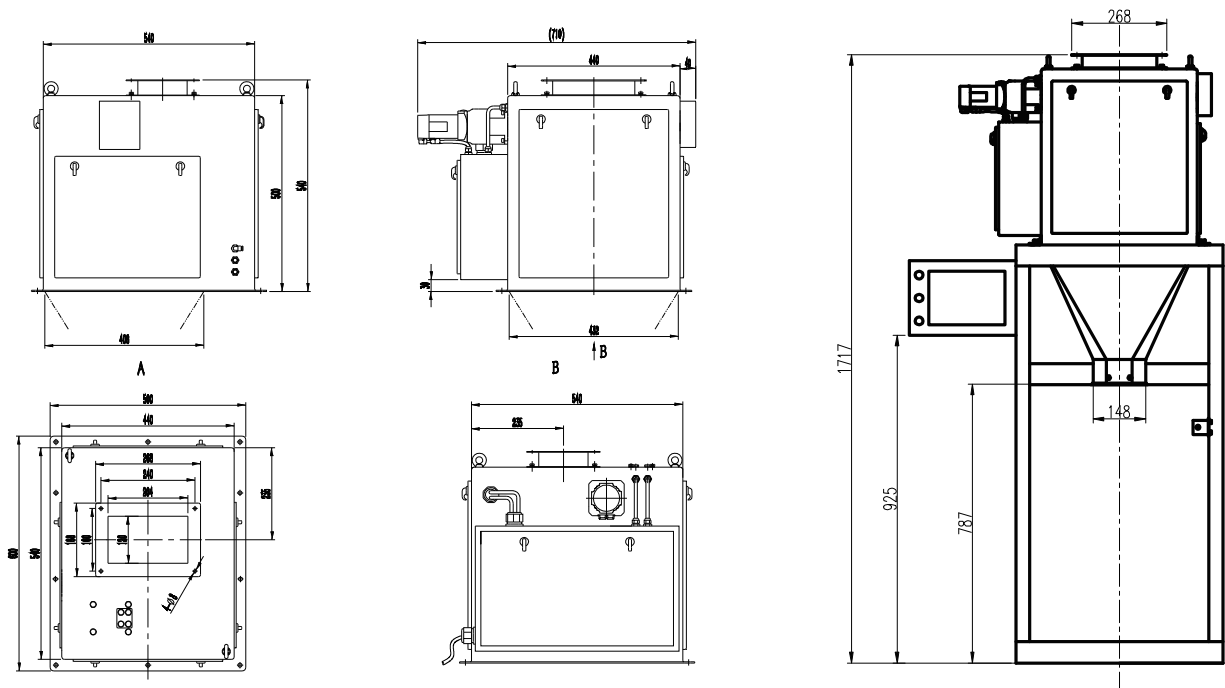
Model	PaxGo AF-05K
Weighing range	0.25~5Kg
Division	1g
Best Accuracy*	±2 g
Speed *	1000pcs/h
Volume	11L
Feeding method	Servo motor+feeding vibrator, pneumatic discharging
Material	SS304, carbon steel
I/O	8 output(5V), 8 input(24V)
Communication	RS485, Modbus TCP/IP
Pneumatic	0.4~0.6MPa
Power	Single Phase AC-220V ±10%, 50/60HZ
Working environment	0~40°C, 90%R.H condensation is not allowed

* Testing material: rice, speed: 1000pcs/h, accuracy: ±2 g

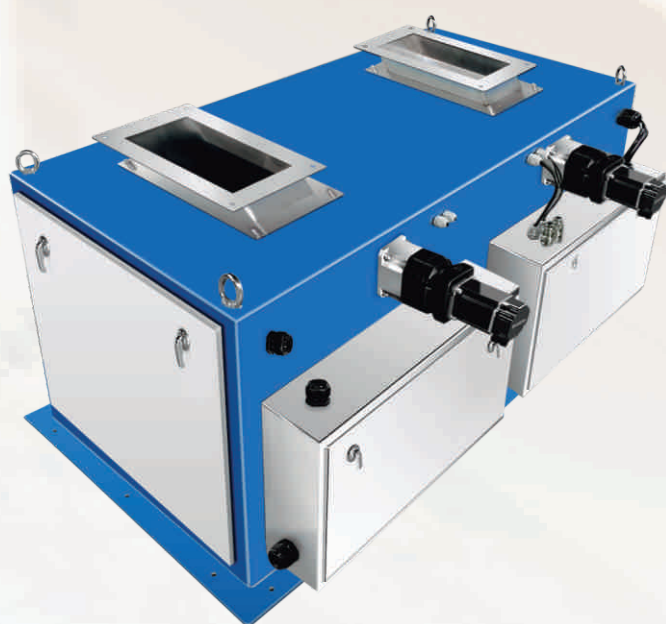
* Normally, the diameter of the testing material 1-5mm

Structure & Dimension

Unit: mm



DUPLEX PACKING FILLER AF-05K II



0.25-5kg

Weighing range



Stable
Performance



Easy
Installation

±2g

Accuracy



Servo Motor
Control



Weighing
Accurate

1600 + Pcs/h

Speed

Features:

- **Granular material:** design for rice, millet, beans and other granular material;
- **Easy dismounting:** module design of measuring hopper for easy cleaning;
- **Parameter setting:** self-adjust function with target value set only;
- **Stable performance:** servo motor controls feeding process;
- **Weighing accurate:** weighing range is 0.25-5kg. Speed can reach 1600 pcs/h and best accuracy is ±2g.



Specification

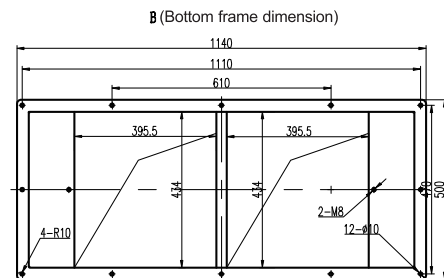
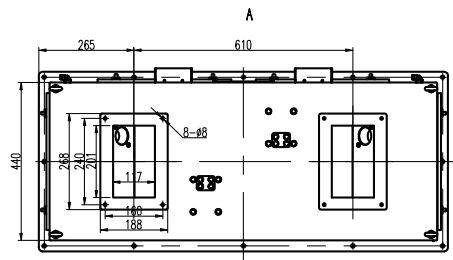
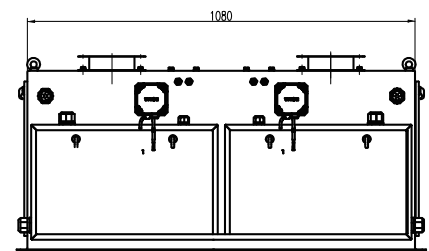
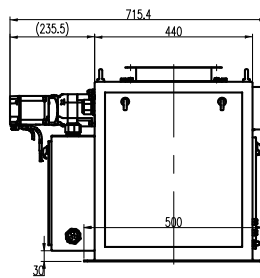
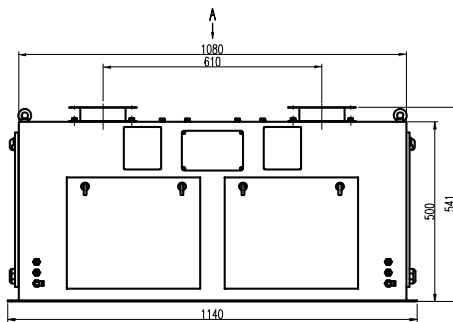
Model	PaxGo AF-05KII
Weighing range	0.25~5Kg
Division	1g
Best Accuracy*	±2 g
Speed *	≥1600 pcs/h
Volume	11L×2
Feeding method	Servo motor+feeding vibrator, pneumatic discharging
Material	SS304, carbon steel
I/O	8 output(5V), 8 input(24V)
Communication	RS485, Modbus TCP/IP
Pneumatic	0.4~0.6MPa
Power	Single Phase AC-220V ±10%, 50/60HZ
Working environment	0~40°C, 90%R.H condensation is not allowed

* Testing material: rice, speed: 1600pcs/h, accuracy: ±2 g

* Normally, the diameter of the testing material 1-5mm

Structure & Dimension

Unit: mm





[Linkedin](#)



[Facebook](#)



[Wechat](#)



General Measure Technology Co.,Ltd.

Address: Room2208, Block A, Building 6, Shenzhen International Innovation Valley,
Nanshan District, Shenzhen, Guangdong Province, P.R.China.

Tel/Wechat: +86 185 6585 5789

E-mail: xjlv@szgmt.com

Website: www.gmweighing.com