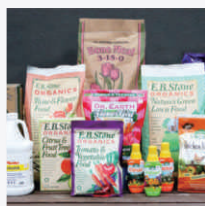


VERTICAL CHECKWEIGHER CW-60K-V

CW-60K-V checkweigher has wide weighing range but high accuracy guarantee. It is perfect for weighing the various bags and boxes running in vertical way in the production line.

- Standard module design for easy installation and maintenance;
- Easy integrating in the production line;
- Weighing range: 5~60kg, weighing accuracy is within $\pm 20\text{g}$;

Multiple applications



Standard



Economy Type

Specification

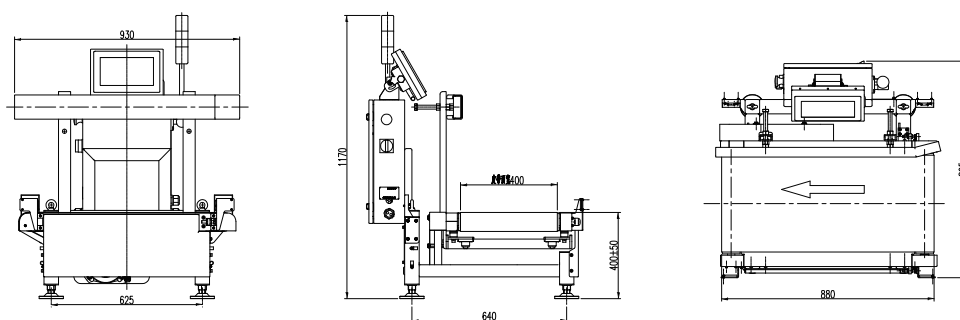
| Model | CW-60K-V Standard | CW-60K-V Economy Type |
|--------------------------|--|--|
| Power | AC220V±10%, 50/60Hz, 1KW | AC220V±10%, 50/60Hz, 1KW |
| Weighing Range | 5~60kg | 5~60kg |
| Best Accuracy* | ±10g | ±20g |
| Highest Speed* | ≤50pcs/min | ≤30pcs/min |
| Belt Speed | 40m/min | 22m/min |
| Conveyor Size | 800mm*400mm | 800mm*400mm |
| Distance Between Rollers | 800mm | 800mm |
| Weighing Platform Height | 400 (±50mm) | 400 (±50mm) |
| Structure Material | Carbon Steel, SS304 (weighingPlatform) | Carbon Steel, SS304 (WeighingPlatform) |
| Belt Material | PVC (black) | PVC (black) |
| Display | 10-inch touch screen | 7-inch touch screen |
| Working Temperature | 0~40℃ | 0~40℃ |
| Max. Humidity | 90% R.H, non-condensation | 90% R.H, non-condensation |
| Load Limit | The instantaneous load limit is 100kg | The instantaneous load limit is100kg |

*It depends on the features of tested object, such as size and weight.

Dimensions

Unit:mm

Standard



Economy Type

