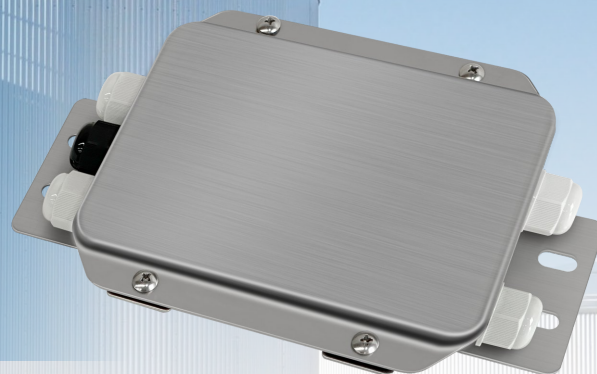


GM LOAD CELL JUNCTION BOX



GM-JX-M

GM Load Cell Junction Box



GM-JX-M is a four-wire load cell junction box. In addition to regulating the wiring function, it can compensate and correct the four angle deviation by adjusting the resistance value of the precision potentiometer. In some special weighing occasions when the angle deviation is so large to affect the measurement results, this junction box can effectively solve the user's problems.

OPERATING INSTRUCTION

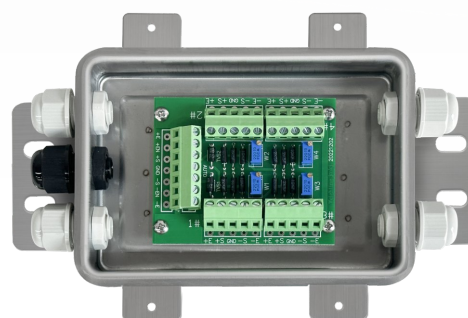


Internal terminal identification

Four-wire Connection Method .

Internal wire terminals are identified as follows:

- "+E"-- EXCITATION +
- "+S"-- SIGNAL +
- "GND"-- SHIELD
- "-E" -- EXCITATION -
- "-S" "-- SIGNAL -



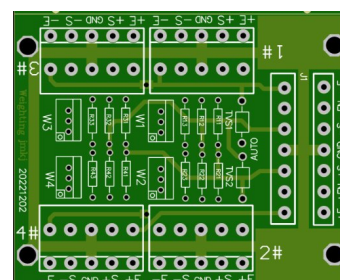
Adjustment Method

Precision potentiometer **W1~W4** can fine tune the output signal of each load cell, which is used to adjust the four angle deviation of the system.

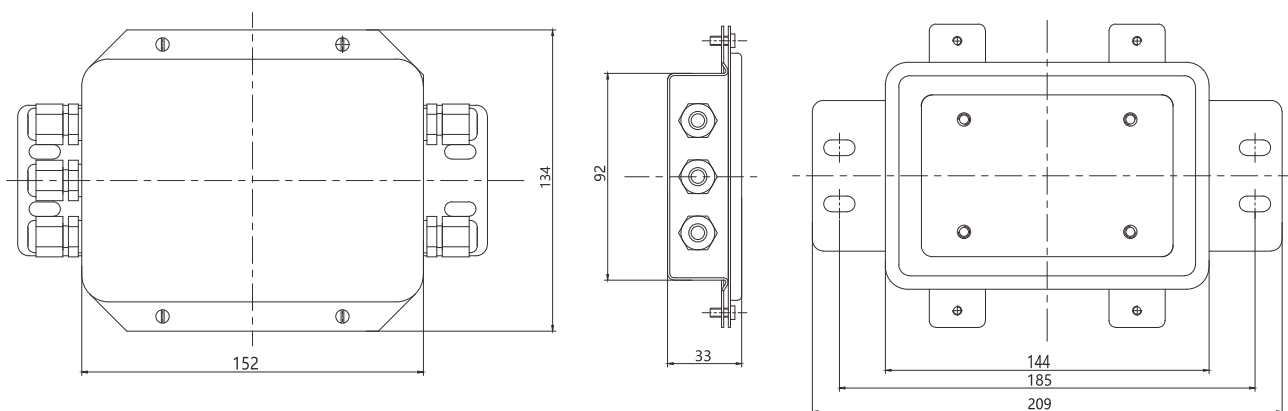


Four-Angle Deviation Adjustment Method

- **Step 1:** Before adjustment, the four-channel potentiometer is gently rotated to the middle position;
- **Step 2:** Fine-tune the channel with large deviation to the average value (close the other three channels when observing one channel);
- **Step 3:** Repeat step 2 until the millivolt signals of four-channel are similar.



Dimensions Unit:mm



Connection Diagram Unit:mm

