

GMC-X3

Loss-in-Weight Controller



GMC-X3 is a rail-mounted loss-in-weight scale control module for high precision continuous dosing applications, capable of reliable, accurate and stable dosing of liquid, powder, granular and flake dry bulk materials, reducing material waste and improving mixture consistency. It is mainly used in chemical, plastic, rare earth smelting and other industries.

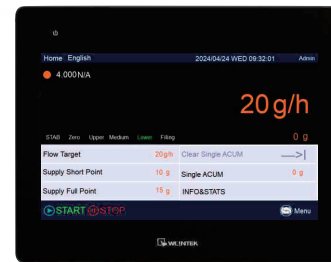
Functions & Features

Weasy Functions

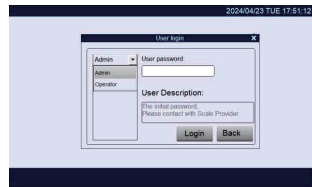
- **Standard** 1.92 -inch OLED display
- **Optional** Weintek 7-inch or 10-inch touch screen, well-designed interface, easy operation.
- Two permissions, prevents operator error;
- Modular design, Clear simple interface and easy operation.
- Support 4 points flow calibration, single point flow calibration, more accuracy;
- Historial data check and excel export.



• Standard



• Optional



Hardware Features

- Stainless steel case,IP65 protection;
- USB Port, Easy to upgrade and import/export data;
- **Standard**
- 6-wire load cell interface;
- 1 analog output interface;
- 1 RS485, 1 RS232 interface with isolation;
- 4 inputs and 4 outputs + 4 self-defined transistor input or output interfaces;
- A standard network port for Modbus TCP
- **Options**
- Dual net work ports for Modbus TCP or Profinet
- 1 Analog input (current/voltage optional)+1 analog output interface;



Software Features

- New generation flow control algorithm, more stable;
- Support analog calibration, automatic/manual calibration of flow rate;
- Automatic locking and unlocking function for flow interference;
- Support two devices to access the instrument parameters function simultaneously (ModbusTCP);
- **Working modes**: ① Flow calibration mode;
- ② Flow rate presetting and flow rate giving mode;
- ③ PID control mode, segment control mode;
- Threshold anti-interference function, which makes the working process of the instrument more stable;
- Multi-material function, support up to 10 sets of material parameters, convenient to switch between different material parameters;

Standard Specification

General Specifications	Model	GMC-X3
	Power Supply	DC 24V (18~36VDC)
	Approved Environment	-10°C~40°C
	Maximum humidity	90% R.H without dew
	Testing standards	Class III 6000 e, 1 μ V/e
	Power Dissipation	15W
Measurement Parameters	Load cell excitation voltage	5V 200mA(MAX)
	Load cell connection	1load cell interface , 6-wire with compensation , up to 8 load cells with 350Ω, support 1mV/V、2mV/V、3mV/V sensitivity.
	Analog Input Range	0~15mV
	Input sensitivity	0.1μV/d
	Non-Linear	0.01%F.S
	A/D Conversion	480 times/sec
Communication Interface	Display Accuracy	1/1,000,000
	Standard	<ul style="list-style-type: none"> ● 1 analog output interface ● 1 RS485, 1 RS232 interface with isolation ● 4 inputs and 4 outputs + 4 self-defined transistor input or output interfaces; ● A standard network port for Modbus TCP
	Optional	<ul style="list-style-type: none"> ● Dual net work ports for Modbus TCP or Profinet ● 1 Analog input (current/voltage optional) + 1 analog output interface;

Application Diagram

