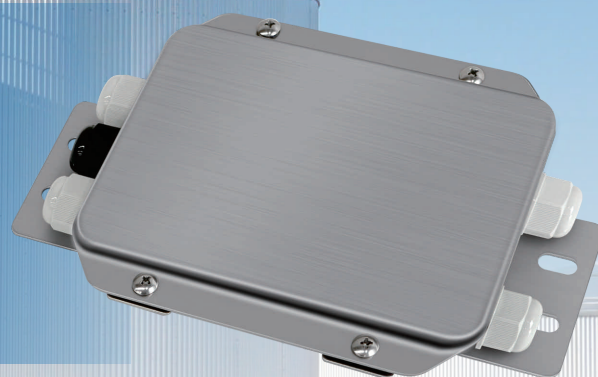


GM-JX-M

GM Load Cell Junction Box



GMA-JB4-Ex is a intrinsic safety explosion-proof junction box that supports connections for 4 analog or digital load cell in 4-wire. By adjusting the resistance value of the potentiometer, it compensates for angle deviations, effectively resolving inaccurate weight results caused by angle differences in weighing applications. Stainless steel housing delivers enhanced protection and superior anti-interference performance. Certified for intrinsic safety explosion-proof standards, it is ideal for deployment in hazardous environments.

OPERATING INSTRUCTION

Terminal identification

- GM-JX-M can connect with the analog or digital load cell.

①When applying to the analog load cell:

- EX+: EXCITATION +
- EX-: EXCITATION -
- SIG+: SIGNAL +
- SIG-: SIGNAL -
- SHLD: SHIELD

(When the load cell is six-wire, short-circuit the +excitation and +sense to EX+, short-circuit the -excitation and -sense to EX-.)

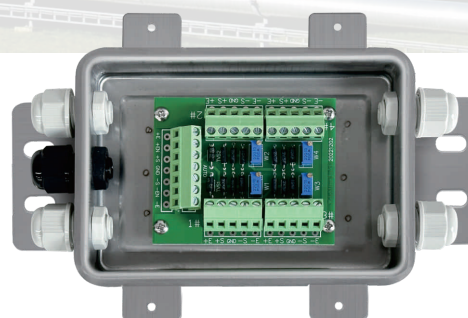
②When applying to the digital load cell:

- 12V+: EXCITATION +
- 12V-: EXCITATION -
- SHLD: SHIELD
- A: SIGNAL A
- B: SIGNAL B

Adjustment Method

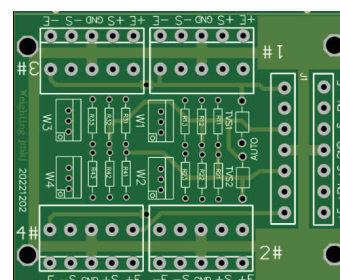
①Switches SW1-SW4 can be assigned to control the on-off of each load cell for single-channel load cell adjustment.

②Potentiometer R1-R4 can fine-tune the output signal of each load cell respectively for adjustment of the four corners of the load cell.



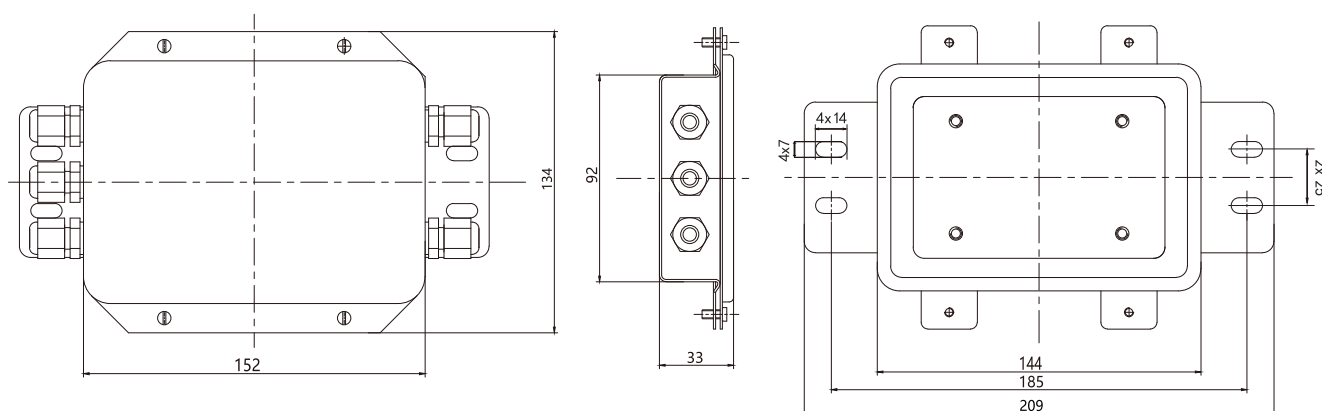
Four-Angle Deviation Adjustment Method

- **Step 1:** Before adjustment, the four-channel potentiometer is gently rotated to the middle position;
- **Step 2:** Fine-tune the channel with large deviation to the average value (close the other three channels when observing one channel);
- **Step 3:** Repeat step 2 until the millivolt signals of four-channel are similar.



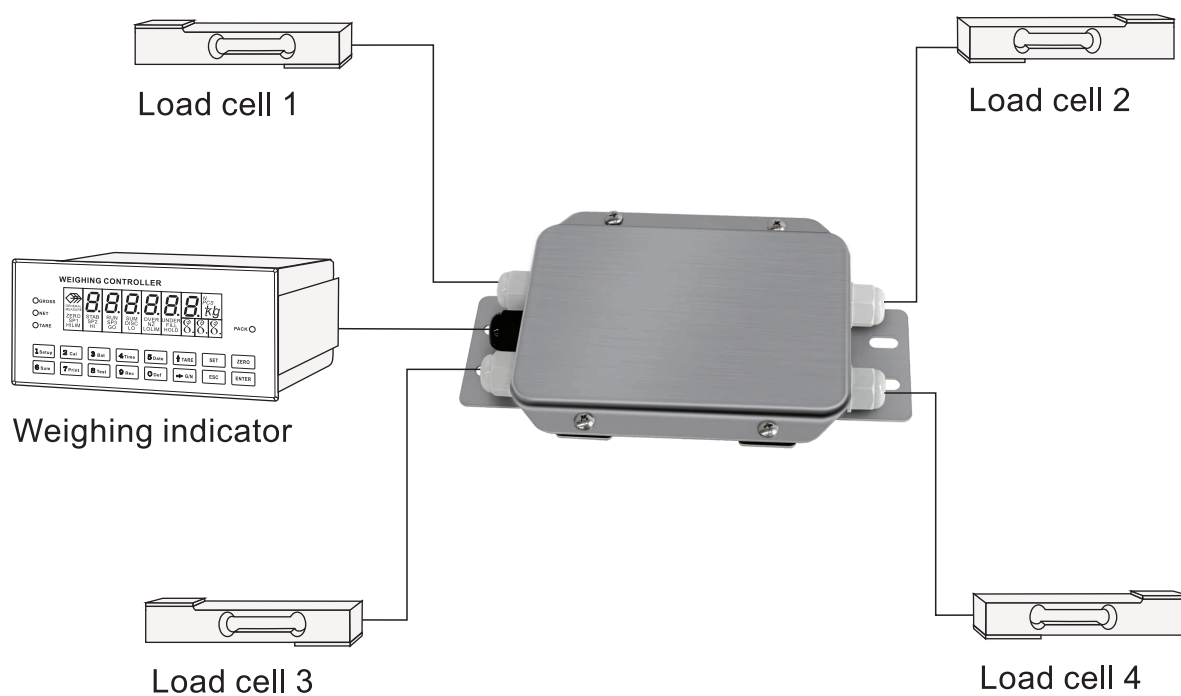
Dimensions

Unit:mm



Connection Diagram

Unit:mm



Linkedin



Facebook



Wechat