



Linkedin



Facebook



Wechat



# PaxGo Series

## Intelligent Packing Filler



### General Measure Technology Co.,Ltd.

Address: Room2208, Block A, Building 6, Shenzhen International Innovation Valley,  
Nanshan District, Shenzhen, Guangdong Province, P.R.China.

Tel/Wechat/Whatsapp : +86 185 6585 5789

E-mail: xjlv@szgmt.com

Website: www.gmweighing.com



## Making the World Measurable Linking Your Smart Life



PaxGo Series Intelligent Packing Filler— an intelligent filler is widely used for granule packing.

## PaxGo Series Intelligent Packing Filler



Easy  
Operation



Automatic  
Control



Accurate  
Weighing



High  
Efficiency

PaxGo is an automatic weigh filler its self-optimizing controls can be precisely configured to your specific material flow, speed and accuracy requirements.

### Features:

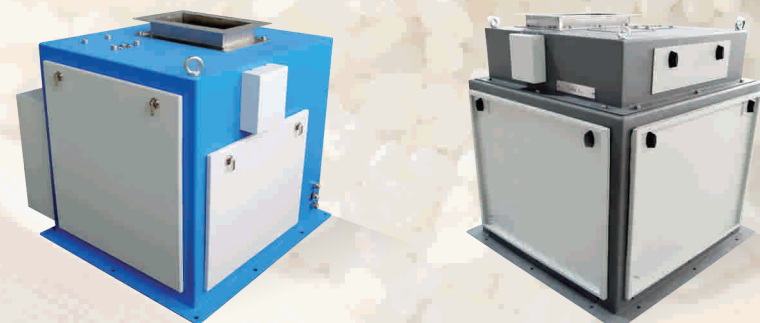
- Specially designed for granular products like Rice, Pulses, Plastic Granules, Animal Feed, Maize, Soybeans, Seeds, Sugar and other granular material;
- Equipped with self optimizing intelligent program for high speed operation;
- Best accuracy  $\pm 2g$ ;
- Models available in 25g~1kg, 0.25-5kg, 0.5-10kg, 5-25kg, 10-50kg;
- Speeds up to 3600pcs/h(depends on different model and weight).





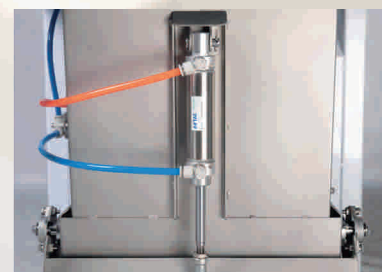
## Industrial Design

Special design for industrial application, high speed and accuracy.



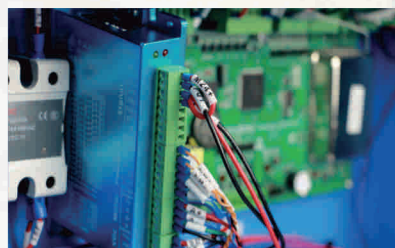
## User-friendly Design

- The food contacting materials are all made of S304 stainless steel and can be used for food packaging;
- International premium brand components ensure the product quality.



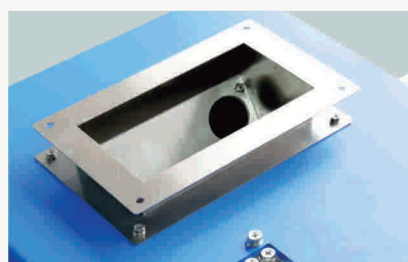
## Communication interface

- Dual serial port RS485;
- Modbus TCP/IP;



## Module Design

Easy installation and dismantling for washing down.



## Servo Motor

For feeding control, intelligent auto-adjustment fast and accurate.



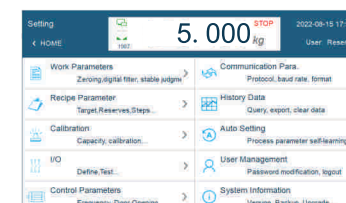
## USB

Embedded USB for exporting data and system upgrading.



## User-friendly design

10-inch color user friendly touch screen and graphical design interface. Simple operation, no need complicated training.



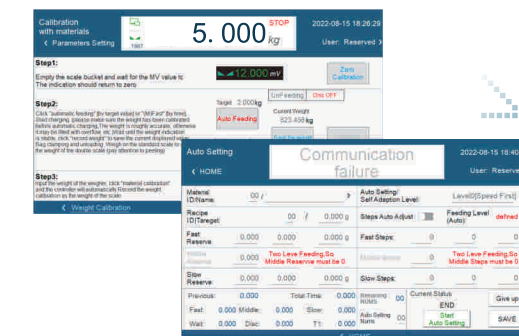
- Parameter interface optimization and upgrade.



- Observing data changes when setting parameters, which is simultaneous and intuitive.

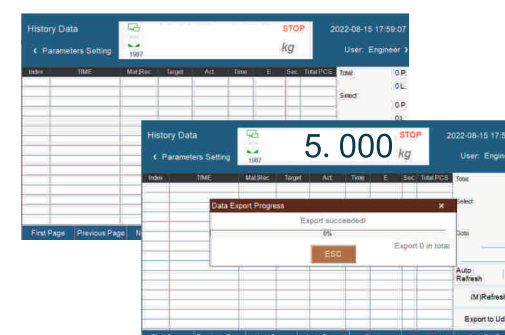


- Calibration according to different materials with step hints to make the field calibration more convenient.

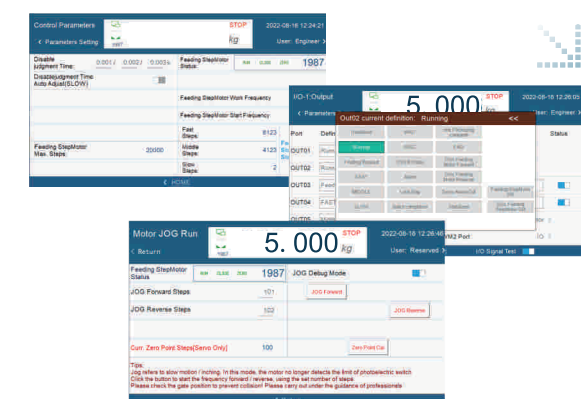


## Well-organized data management

- Ten million weight data entries record, power-off data save function.



- Motor parameters: an interface can simultaneously display the motor status and parameters which is easy to debug.



# GRANULE PACKING FILLER AF-1K



**50g - 1kg**  
Weighing range

**±1~3g**  
Accuracy range

**1800** Pcs/h  
Top speed



Stable  
Performance



Easy  
Installation



Pneumatic  
Cylinder Control



High Speed  
Weighing



## Features:

### • High speed and accuracy:

the highest speed can reach 1800pcs/h and the accuracy range is  $\pm 1 \sim 3g$ ;

### • Granular materials:

special designed for small weighing range packages, like rice, millet, beans and so on;

### • Stable performance:

step motor + vibrator feeding-type, pneumatic discharging-type;

### • Parameter setting:

self-adjust function with target value set only, easy operation.



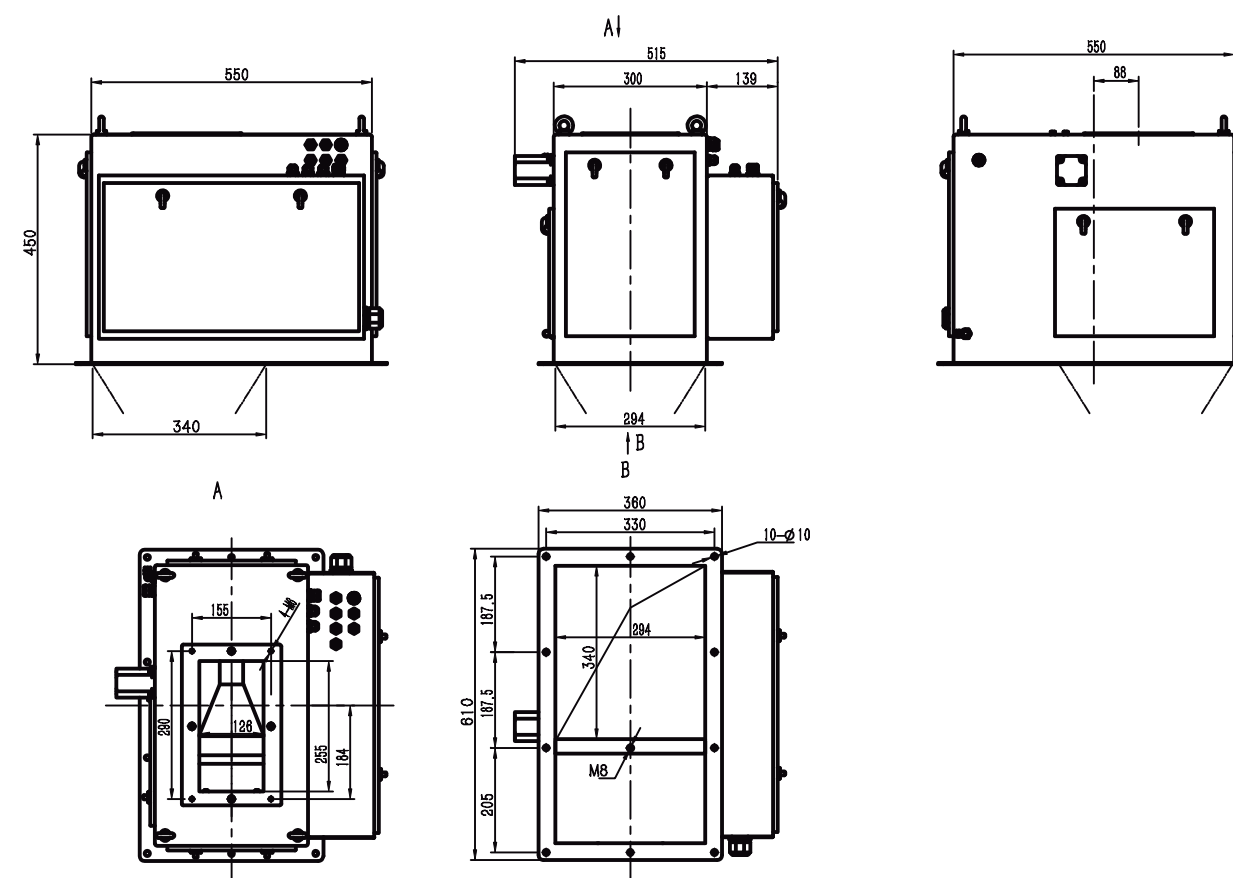
## Specification

Model	PaxGO AF-1K
Weighing range	0.05~1Kg
Division	1g
Accuracy range*	$\pm 1 \sim 3g$
Top speed*	1800 pcs/h
Volume	2.8L
Feeding method	Step motor + vibrator feeding-type, pneumatic discharging-type;
Material	Carbon steel/stainless steel optional
Communication	RS485, Modbus TCP/IP
Pneumatic	0.4~0.6MPa 2m <sup>3</sup> /h
Power	AC 220V $\pm 10\%$ , 50/60HZ, 200KW
Working environment	0~40°C, 90%R.H condensation is not allowed

\*Accuracy depends on the natures of material and flow rate.  
Speed depends on the density and flow rate of the materials.

## Structure & Dimension

Unit: mm



\*Specification and dimension may be upgraded, please consult sales manager for the latest info.



# DUPLEX PACKING FILLER AF-1KII



Stable  
Performance



Easy  
Installation



Pneumatic  
Cylinder Control



High Speed  
Weighing



## Features:

### • High speed and accuracy:

the highest speed can reach 3600pcs/h and the accuracy range is  $\pm 1 \sim 3g$ ;

### • Granular materials:

special designed for small weighing range packages, like rice, millet, beans and so on;

### • Stable performance:

step motor + vibrator feeding-type, pneumatic discharging-type;

### • Parameter setting:

self-adjust function with target value set only, easy operation.



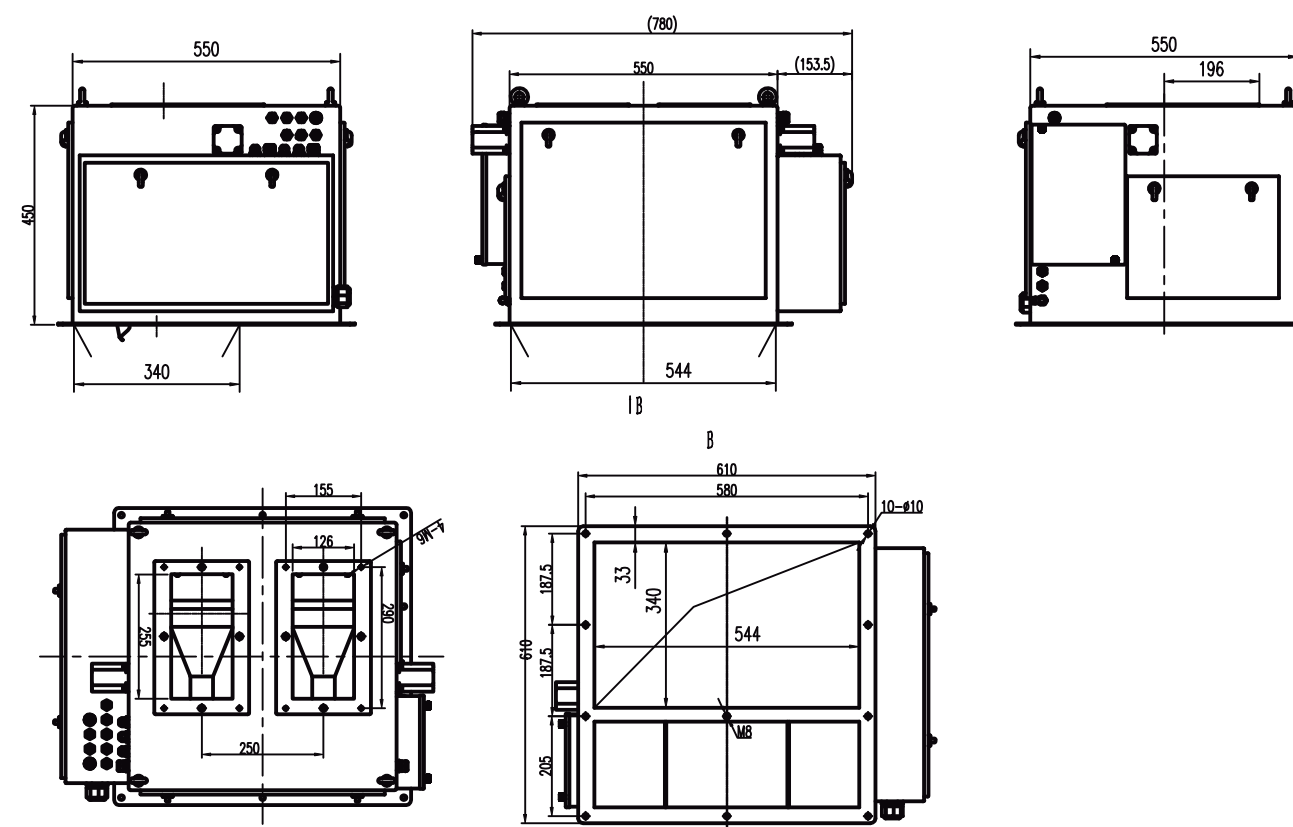
## Specification

Model	PaxGO AF-1KII
Weighing range	0.05~1Kg
Division	1g
Accuracy range*	$\pm 1 \sim 3g$
Top speed*	3600 pcs/h
Volume	2.8L x 2
Feeding method	Step motor + vibrator feeding-type, pneumatic discharging-type;
Material	Carbon steel/stainless steel optional
Communication	RS485, Modbus TCP/IP
Pneumatic	0.4~0.6MPa 2m <sup>3</sup> /h
Power	AC 220V $\pm 10\%$ , 50/60HZ, 400KW
Working environment	0~40°C, 90%R.H condensation is not allowed

\*Accuracy depends on the natures of material and flow rate.  
Speed depends on the density and flow rate of the materials.

## Structure & Dimension

Unit: mm



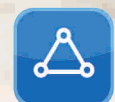
\*Specification and dimension may be upgraded, please consult sales manager for the latest info.

# GRANULE PACKING FILLER AF-5K



**0.25-5kg**

Weighing range



Stable  
Performance



Easy  
Installation

**±1~5g**

Accuracy range



Servo Motor  
Control



Weighing  
Accurate

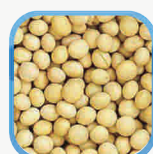
**1500**

Pcs/h

Top speed

## Features:

- **Granular material:** design for rice, millet, beans and other granular material;
- **Easy dismounting:** module design of measuring hopper for easy cleaning;
- **Parameter setting:** self-adjust function with target value set only;
- **Stable performance:** servo motor controls feeding process;
- **Fast and accurate:** weighing range is 0.25-5kg, Speed can reach 1500 pcs/h ,and accuracy range  $\pm 1\sim 5g$ .



• User-friendly interface design, vivid display, easy to operate.

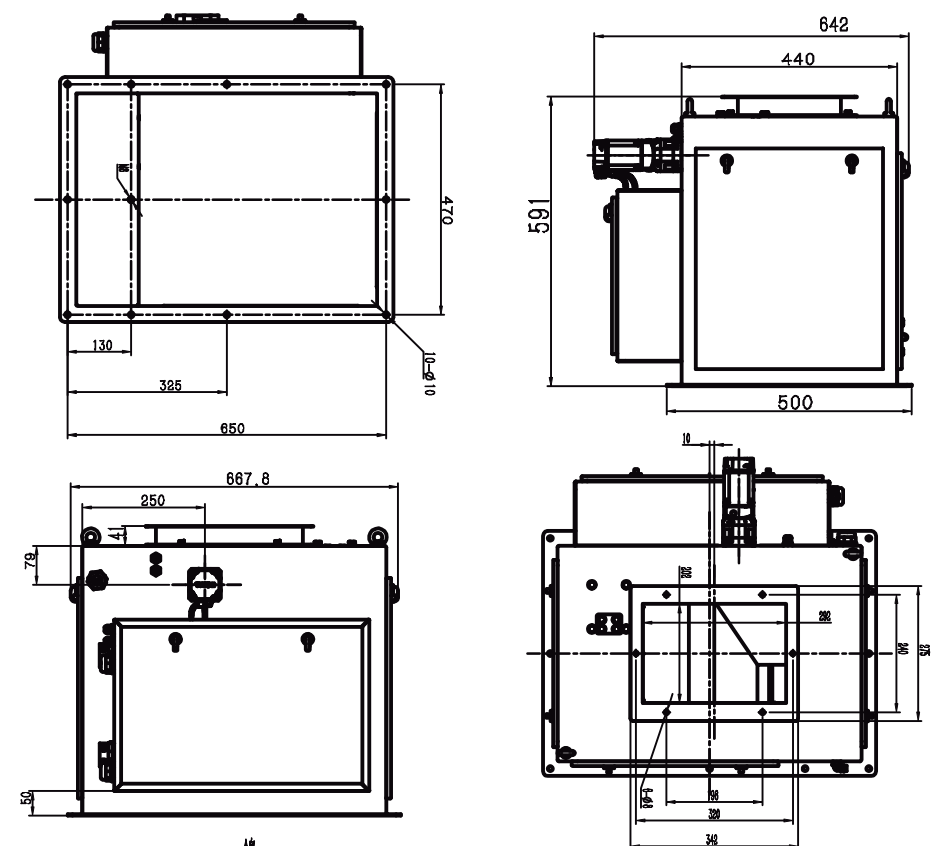
## Specification

Model	PaxGO AF-5K
Weighing range	0.25~5Kg
Division	1g
Accuracy range*	$\pm 1\sim 5g$
Top speed*	1500 pcs/h
Volume	12L
Feeding method	Servo motor+feeding vibrator , pneumatic discharging
Material	SS304,carbon steel
I/O	8 output(5V),8 input(24V)
Communication	RS485, Modbus TCP/IP
Pneumatic	0.4~0.6MPa
Power	Single Phase AC-220V $\pm 10\%$ ,50/60HZ,500KW
Working environment	0~40°C , 90%R.H condensation is not allowed

\*Accuracy depends on the natures of material and flow rate.  
Speed depends on the density and flow rate of the materials.

## Structure & Dimension

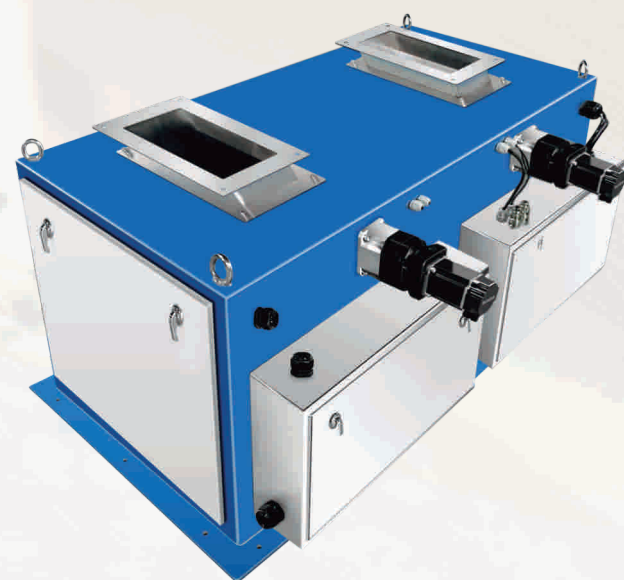
Unit: mm



\*Specification and dimension may be upgraded, please consult sales manager for the latest info.



# DUPLEX PACKING FILLER AF-5KII



**0.25-5kg**

Weighing range

**±1~5g**

Accuracy range

**2800**

Pcs/h  
Top speed



Stable  
Performance



Easy  
Installation



Servo Motor  
Control



Weighing  
Accurate

## Features:

- **Granular material:** design for rice, millet, beans and other granular material;
- **Easy dismounting:** module design of measuring hopper for easy cleaning;
- **Parameter setting:** self-adjust function with target value set only;
- **Stable performance:** servo motor controls feeding process;
- **Fast and accurate:** weighing range is 0.25-5kg, Speed can reach 2800 pcs/h , and accuracy range  $\pm 1\sim 5g$ .



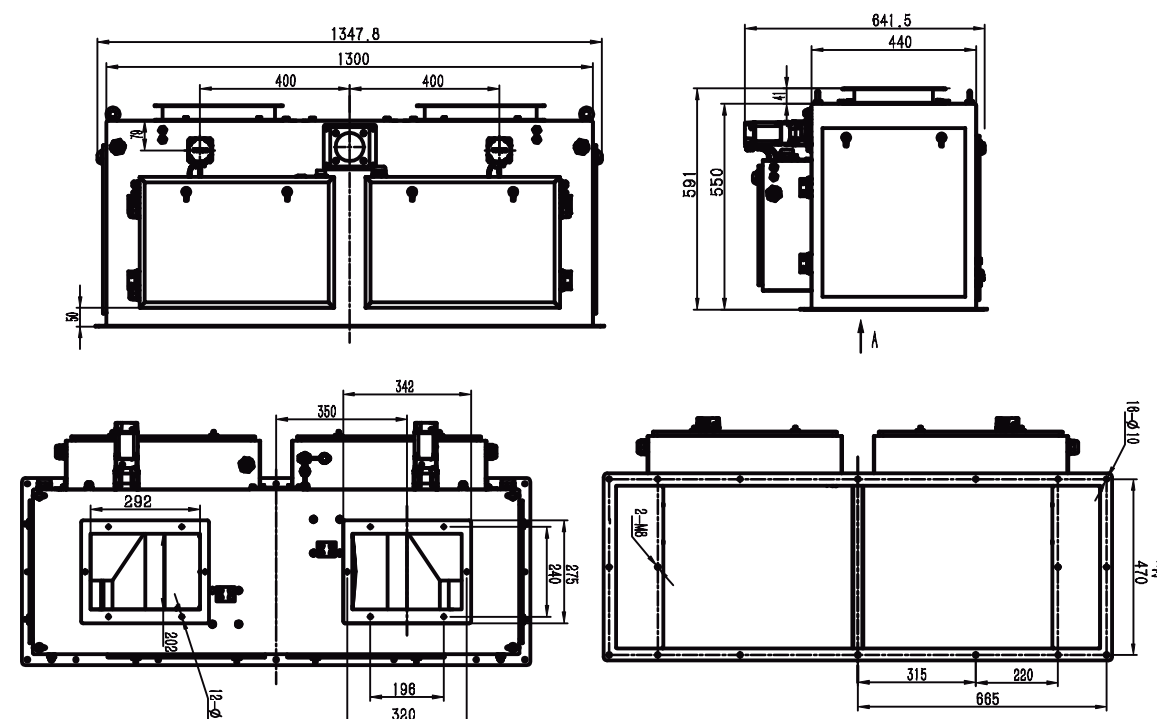
## Specification

Model	PaxGO AF-5KII
Weighing range	0.25~5Kg
Division	1g
Accuracy range*	$\pm 1\sim 5g$
Top speed*	2800 pcs/h
Volume	12L x 2
Feeding method	Servo motor+feeding vibrator , pneumatic discharging
Material	SS304,carbon steel
I/O	8 output(5V),8 input(24V)
Communication	RS485, Modbus TCP/IP
Pneumatic	0.4~0.6MPa
Power	Single Phase AC-220V $\pm 10\%$ ,50/60HZ,500KW
Working environment	0~40°C , 90%R.H condensation is not allowed

\*Accuracy depends on the natures of material and flow rate.  
Speed depends on the density and flow rate of the materials.

## Structure & Dimension

Unit: mm



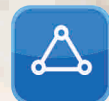
\*Specification and dimension may be upgraded, please consult sales manager for the latest info.

# GRANULE PACKING FILLER AF-10K



**0.5-10kg**

Weighing range



Stable  
Performance



Easy  
Installation

**±2~10g**

Accuracy range



Servo Motor  
Control



Weighing  
Accurate

**1300**

Top speed

Pcs/h

## Features:

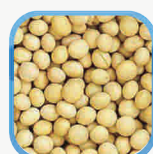
- **Granular material:** design for rice, millet, beans and other granular material;
- **Easy dismounting:** module design of measuring hopper for easy cleaning;
- **Parameter setting:** self-adjust function with target value set only;
- **Stable performance:** servo motor controls feeding process;
- **Fast and accurate:** weighing range is 0.5-10kg , Speed can reach 1300 pcs/h , and accuracy range  $\pm 2\sim 10g$ .

## Optional:



10-inch touch screen

User-friendly interface design,  
vivid display, easy to operate.



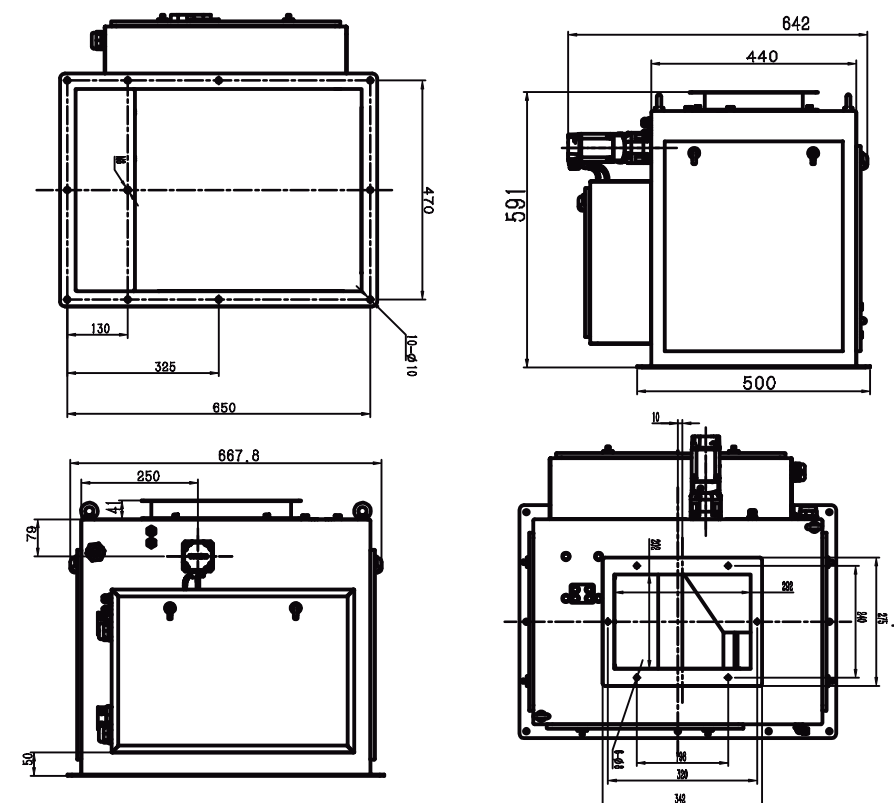
## Specification

Model	PaxGO AF-10K
Weighing range	0.5~10Kg
Division	1g
Accuracy range*	$\pm 2\sim 10g$
Top speed*	1300pcs/h
Volume	18L
Feeding method	Servo motor+ feeding vibrator, pneumatic discharging
Material	SS304,carbon steel
I/O	8 output(5V),8 input(24V)
Communication	RS485,Modbus TCP/IP
Pneumatic	0.4~0.6MPa
Power	Single Phase AC-220V $\pm 10\%$ ,50/60HZ,500KW
Working environment	0~40°C , 90%R.H condensation is not allowed

\*Accuracy depends on the natures of material and flow rate.  
Speed depends on the density and flow rate of the materials.

## Structure & Dimension

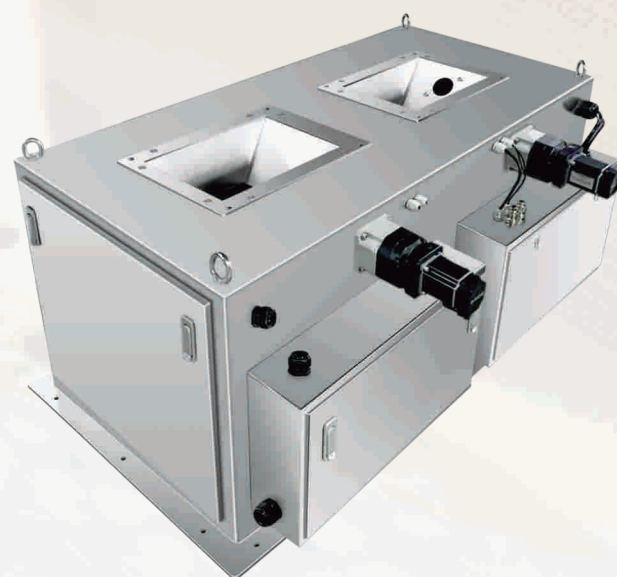
Unit: mm



\*Specification and dimension may be upgraded, please consult sales manager for the latest info.



# DUPLEX PACKING FILLER AF-10KII



**0.5-10kg**  
Weighing range



Stable  
Performance



Easy  
Installation

**±2~10g**  
Accuracy range



Servo Motor  
Control



Weighing  
Accurate

**2400** Pcs/h  
Top speed

## Features:

- **Granular material:** design for rice, millet, beans and other granular material;
- **Easy dismounting:** module design of measuring hopper for easy cleaning;
- **Parameter setting:** self-adjust function with target value set only;
- **Stable performance:** servo motor controls feeding process;
- **Fast and accurate:** weighing range is 0.5-10kg, Speed can reach 2400 pcs/h, and accuracy range  $\pm 2\sim 10g$ .

## Optional:



10-inch touch screen

User-friendly interface design,  
vivid display, easy to operate.



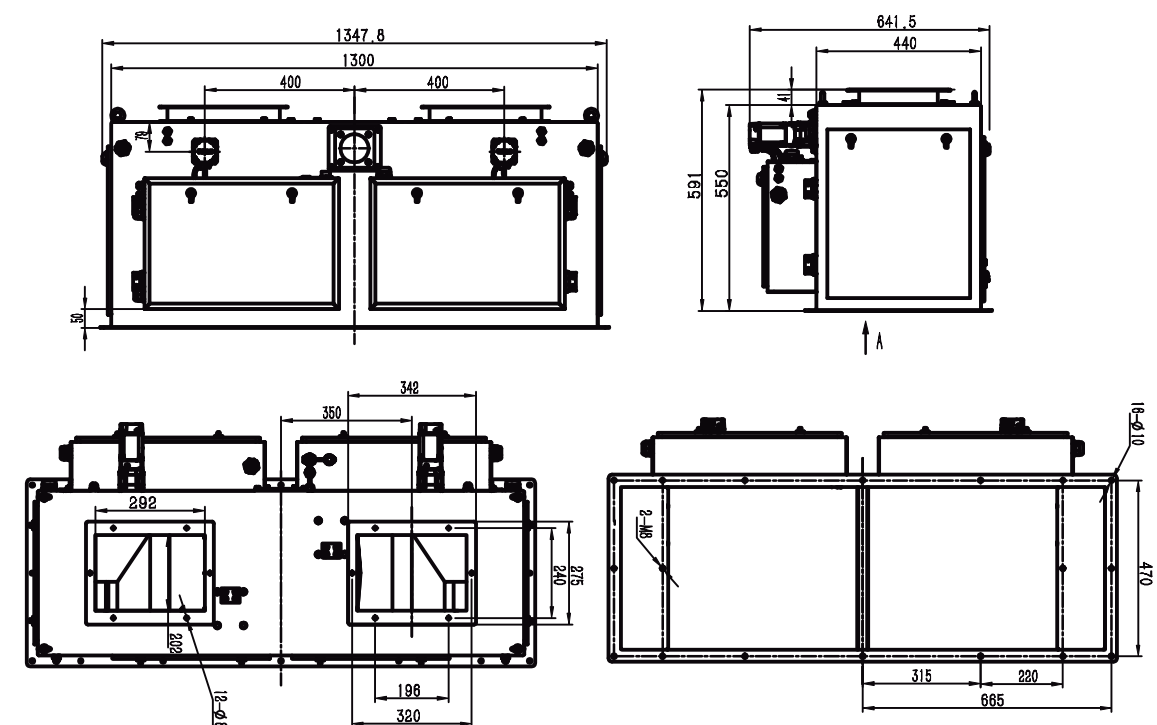
## Specification

Model	PaxGO AF-10KII
Weighing range	0.5~10Kg
Division	1g
Accuracy range*	$\pm 2\sim 10g$
Top speed*	2400 pcs/h
Volume	18L x 2
Feeding method	Servo motor + feeding vibrator , pneumatic discharging
Material	SS304,carbon steel
I/O	8 output(5V),8 input(24V)
Communication	RS485, Modbus TCP/IP
Pneumatic	0.4~0.6MPa
Power	Single Phase AC-220V $\pm 10\%$ ,50/60HZ,500KW
Working environment	0~40°C , 90%R.H condensation is not allowed

\*Accuracy depends on the natures of material and flow rate.  
Speed depends on the density and flow rate of the materials.

## Structure & Dimension

Unit: mm



\*Specification and dimension may be upgraded, please consult sales manager for the latest info.

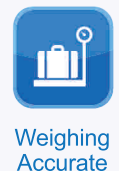
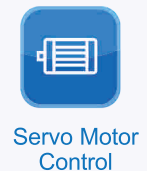
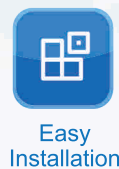
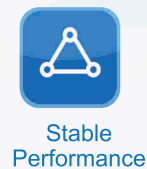
# GRANULE PACKING FILLER AF-25K



**5-25 kg**  
Weighing range

**±5~15g**  
Accuracy range

**1200 Pcs/h**  
Top speed

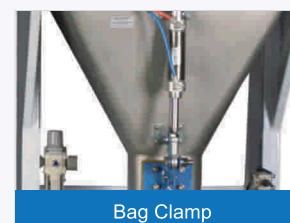


## Features:

- **Granular material:** design for plastic particle, granular fertilizer, feeds and other granular material;
- **Easy dismounting:** module design of measuring hopper for easy cleaning;
- **Parameter setting:** self-adjust function with target value set only;
- **Stable performance:** servo motor controls feeding process;
- **Fast and accurate:** weighing range is 5-25kg, Speed can reach 1200 pcs/h, and accuracy range  $\pm 5\sim 15g$ .



## Optional:



- SS304 stainless steel.



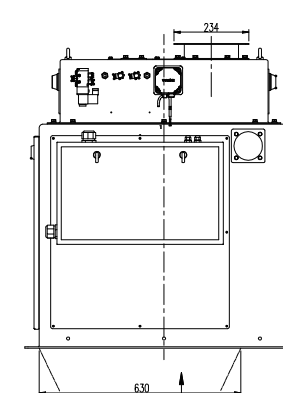
## Specification

Model	PaxGO AF-25K
Weighing range	5~25Kg
Division	1g
Accuracy range*	$\pm 5\sim 15g$
Top speed*	1200pcs/h
Volume	55L
Feeding method	Feeding control by servo, pneumatic discharging
Material	SS304,carbon steel
I/O	8 output(5V),8 input(24V)
Communication	RS485,Modbus TCP/IP
Pneumatic	0.4~0.6MPa
Power	Single Phase AC-220V $\pm 10\%$ ,50/60HZ,1KW
Working environment	0~40°C , 90%R.H condensation is not allowed

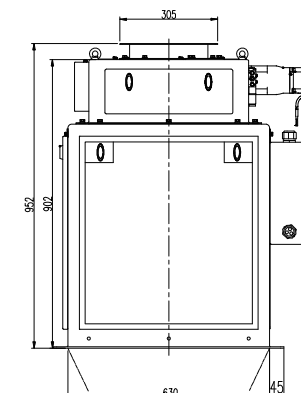
\*Accuracy depends on the natures of material and flow rate.  
Speed depends on the density and flow rate of the materials.

## Structure & Dimension

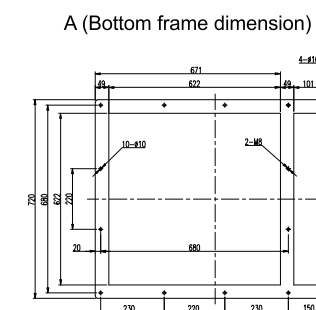
Unit: mm



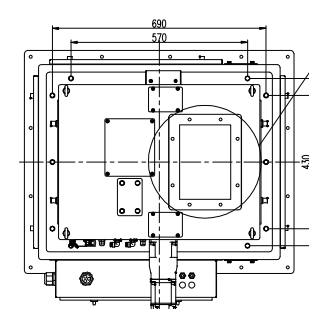
A (Bottom frame dimension)



B (Feeding port dimension)



A (Bottom frame dimension)



B (Feeding port dimension)

\*Specification and dimension may be upgraded, please consult sales manager for the latest info.



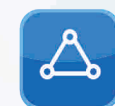
# PACKING FILLER (3 load cells structure) AF-25K



**5-25 kg**  
Weighing range

**±5~15g**  
Accuracy range

**1250 Pcs/h**  
Top speed



Stable  
Performance



Easy  
Installation



Servo Motor  
Control



Weighing  
Accurate



## Features:

- **Granular material:** design for plastic particle, granular fertilizer, feeds and other granular material;
- **Easy dismounting:** module design of measuring hopper for easy cleaning;
- **Parameter setting:** self-adjust function with target value set only;
- **Stable performance:** servo motor controls feeding process;
- **Fast and accurate:** weighing range is 5-25kg, Speed can reach 1250 pcs/h, and accuracy range  $\pm 5\sim 15g$ .

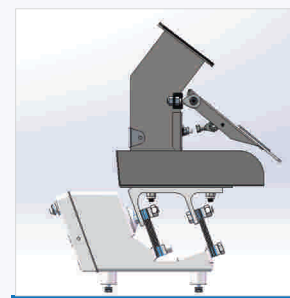


## Optional:



Bag Clamp

- SS304 stainless steel.



vibrator feeding

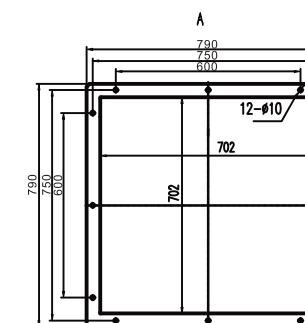
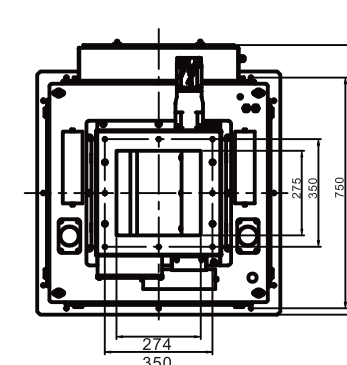
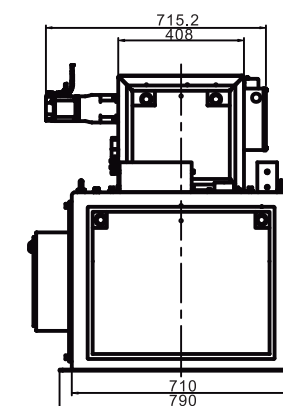
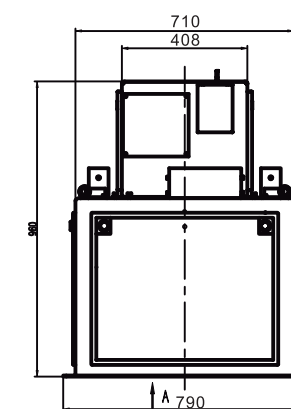
## Specification

Model	PaxGO AF-25K (3 load cells structure)
Weighing range	5~25Kg
Division	1g
Accuracy range*	$\pm 5\sim 15g$
Top speed*	1250pcs/h
Volume	55L
Feeding method	Feeding control by servo, pneumatic discharging
Material	SS304,carbon steel
I/O	8 output(5V),8 input(24V)
Communication	RS485,Modbus TCP/IP
Pneumatic	0.4~0.6MPa
Power	Single Phase AC-220V $\pm 10\%$ ,50/60HZ,1KW
Working environment	0~40°C, 90%R.H condensation is not allowed

\*Accuracy depends on the natures of material and flow rate.  
Speed depends on the density and flow rate of the materials.

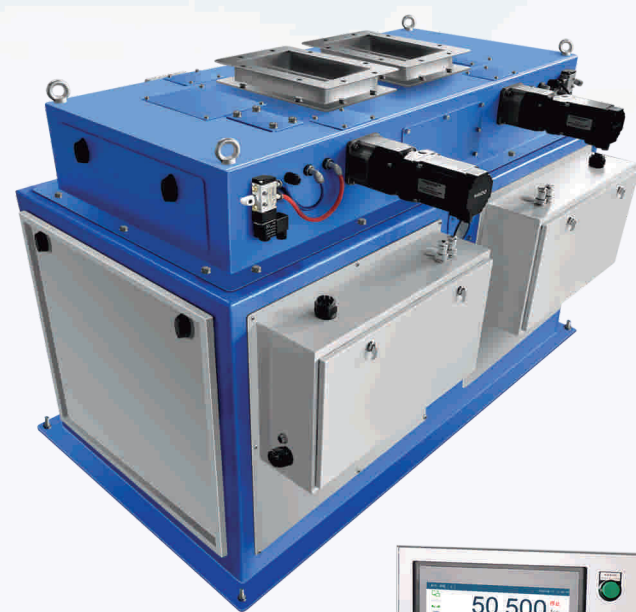
## Structure & Dimension

Unit: mm



\*Specification and dimension may be upgraded, please consult sales manager for the latest info.

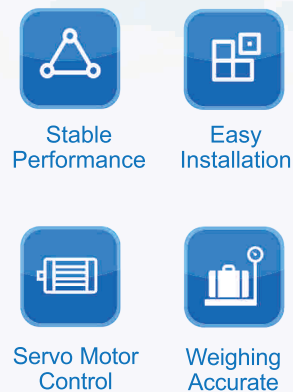
# DUPLEX PACKING FILLER AF-25KⅡ



**5-25kg**  
Weighing range

**±5~15g**  
Accuracy range

**2200** Pcs/h  
Top speed

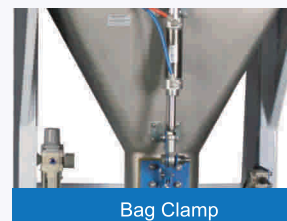


## Features:

- **Granular material:** design for plastic particle, granular fertilizer, feeds and other granular material;
- **Easy dismounting:** module design of measuring hopper for easy cleaning;
- **Parameter setting:** self-adjust function with target value set only;
- **Stable performance:** servo motor controls feeding process;
- **Fast and accurate:** weighing range is 5-25kg, Speed can reach 2200 pcs/h, and accuracy range  $\pm 5\sim 15g$ .



## Optional:



Bag Clamp

- SS304 stainless steel.



vibrator feeding

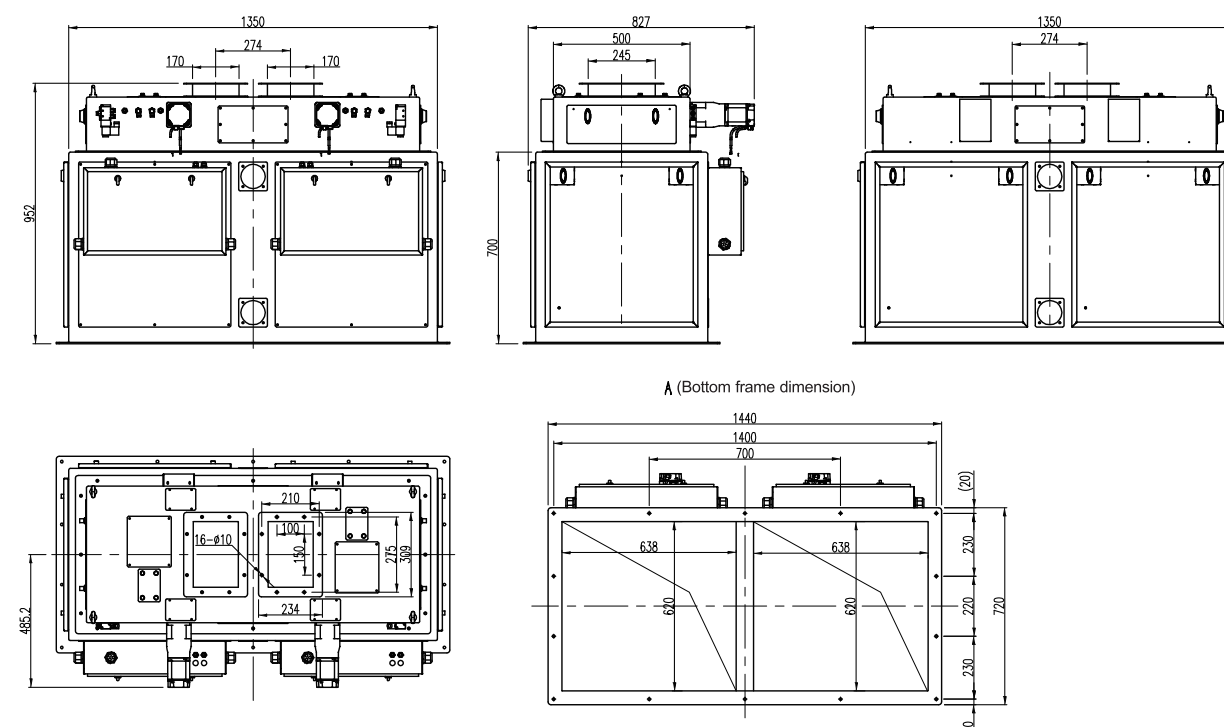
## Specification

Model	PaxGO AF-25KⅡ
Weighing range	5~25Kg
Division	1g
Accuracy range*	$\pm 5\sim 15g$
Top speed*	2200pcs/h
Volume	55L x 2
Feeding method	Feeding control by servo, pneumatic discharging
Material	SS304, carbon steel
I/O	8 output(5V), 8 input(24V)
Communication	RS485, Modbus TCP/IP
Pneumatic	0.4~0.6MPa
Power	Single Phase AC-220V $\pm 10\%$ , 50/60HZ, 1KW
Working environment	0~40°C, 90%R.H condensation is not allowed

\*Accuracy depends on the natures of material and flow rate.  
Speed depends on the density and flow rate of the materials.

## Structure & Dimension

Unit: mm



\*Specification and dimension may be upgraded, please consult sales manager for the latest info.



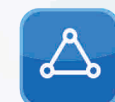
# Duplex Packing Filler (3 load cells structure) AF-25KII



**5-25kg**  
Weighing range

**±5~15g**  
Accuracy range

**2400** Pcs/h  
Top speed



Stable  
Performance



Easy  
Installation



Servo Motor  
Control



Weighing  
Accurate

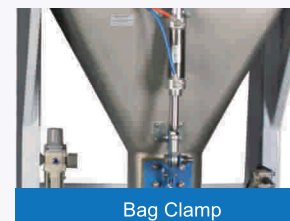


## Features:

- **Granular material:** design for plastic particle, granular fertilizer, feeds and other granular material;
- **Easy dismounting:** module design of measuring hopper for easy cleaning;
- **Parameter setting:** self-adjust function with target value set only;
- **Stable performance:** servo motor controls feeding process;
- **Fast and accurate:** weighing range is 5-25kg, Speed can reach 2400 pcs/h, and accuracy range  $\pm 5\sim 15g$ .

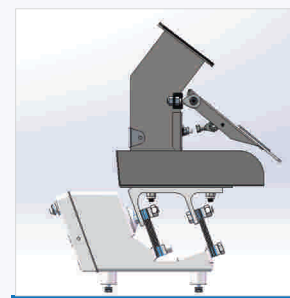


## Optional:



Bag Clamp

- SS304 stainless steel.



vibrator feeding

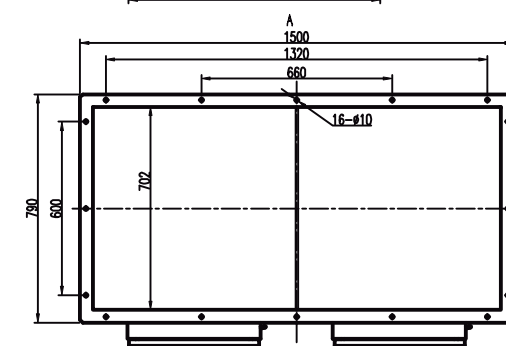
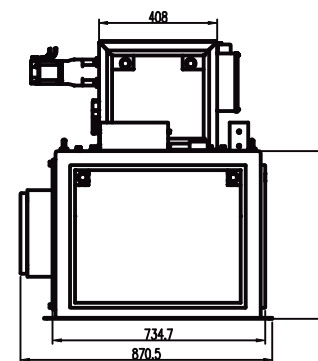
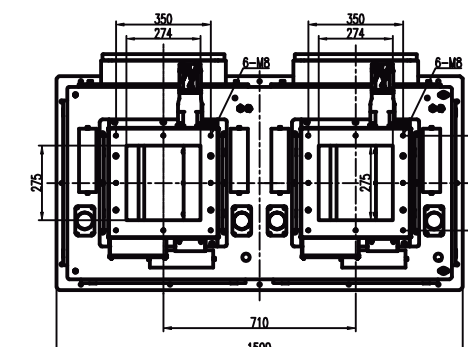
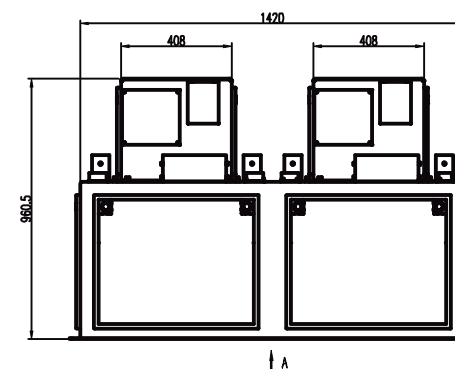
## Specification

Model	PaxGO AF-25KII (3 load cells structure)
Weighing range	5~25Kg
Division	1g
Accuracy range*	$\pm 5\sim 15g$
Top speed*	2400pcs/h
Volume	55L x 2
Feeding method	Feeding control by servo, pneumatic discharging
Material	SS304,carbon steel
I/O	8 output(5V),8 input(24V)
Communication	RS485,Modbus TCP/IP
Pneumatic	0.4~0.6MPa
Power	Single Phase AC-220V $\pm 10\%$ ,50/60HZ,1KW
Working environment	0~40°C, 90%R.H condensation is not allowed

\*Accuracy depends on the natures of material and flow rate.  
Speed depends on the density and flow rate of the materials.

## Structure & Dimension

Unit: mm



\*Specification and dimension may be upgraded, please consult sales manager for the latest info.

# GRANULE PACKING FILLER

(Jumbo Bag Packing Function Available)

## AF-50K



**5-50 kg**

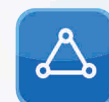
Weighing range

**±10~25g**

Accuracy range

**1000 Pcs/h**

Top speed



Stable  
Performance



Easy  
Installation



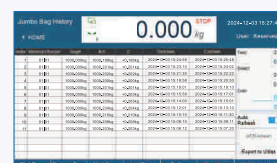
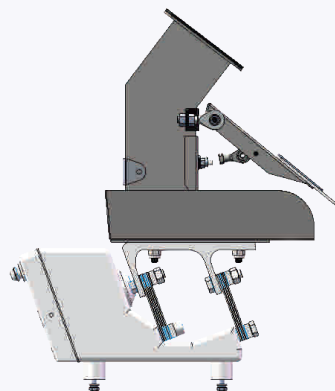
Servo Motor  
Control



Weighing  
Accurate

### Optional:

- vibrator feeding



## Features:

- **Granular material:** design for free-flow granular materials such as plastic particles, rice, sugar and so on;
- **Module design:** easy dismounting for cleaning;
- **Parameter setting:** self-adjust function with target value set only;
- **Stable performance:** servo motor controls feeding process;
- **Fast and accurate:** 1000 pcs/h, and accuracy range  $\pm 10\sim 25g$ ;
- **Jumbo bag packing performance:** accuracy:  $\pm 500g$ , speed: 1t/min;
- **Jumbo bag packing function:** multi-pack continuous discharging available, fast feeding for speed and slow feeding of the last pack for accuracy;
- **History record:** every pack's entry and jumbo bag packing data recorded.



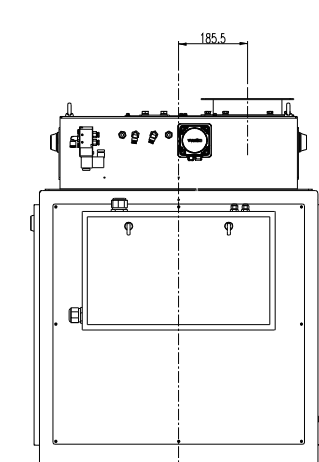
## Specification

Model	PaxGO AF-50K	AF-50K Jumbo Bag Packing
Weighing range	5~50Kg	500kg~50t
Division	1g	1g
Accuracy range*	$\pm 10\sim 25g$	$\pm 500g$
Top speed*	1000pcs/h	1t/min
Volume	86L	
Feeding method	Feeding control by servo, pneumatic discharging	
Material	SS304, carbon steel	
I/O	8 output(5V), 8 input(24V)	
Communication	RS485, Modbus TCP/IP	
Pneumatic	0.4~0.6MPa	
Power	Single Phase AC-220V $\pm 10\%$ , 50/60HZ, 1KW	
Working environment	0~40°C, 90%R.H condensation is not allowed	

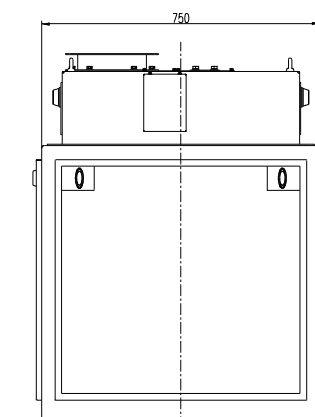
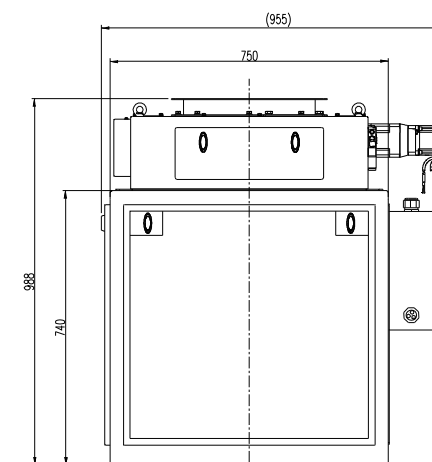
\*Accuracy depends on the natures of material and flow rate.  
Speed depends on the density and flow rate of the materials.

## Structure & Dimension

Unit: mm



A (Bottom frame dimension)



\*Specification and dimension may be upgraded, please consult sales manager for the latest info.

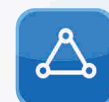
# PACKING FILLER (3 load cells structure) AF-50K



**10-50kg**  
Weighing range

**±10~25g**  
Accuracy range

**1150 Pcs/h**  
Top speed



Stable  
Performance



Easy  
Installation



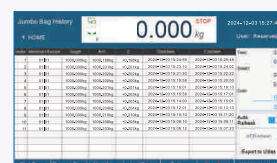
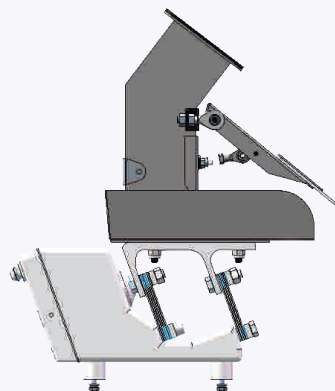
Servo Motor  
Control



Weighing  
Accurate

## Optional:

- vibrator feeding



## Features:

- **Granular material:** design for free-flow granular materials such as plastic particles, rice, sugar and so on;
- **Module design:** easy dismounting for cleaning;
- **Parameter setting:** self-adjust function with target value set only;
- **Stable performance:** servo motor controls feeding process;
- **Fast and accurate:** 1150 pcs/h, and accuracy range  $\pm 10\sim 25g$ ;
- **Jumbo bag packing performance:** accuracy:  $\pm 500g$ , speed: 1t/min;
- **Jumbo bag packing function:** multi-pack continuous discharging available, fast feeding for speed and slow feeding of the last pack for accuracy;
- **History record:** every pack's entry and jumbo bag packing data recorded.



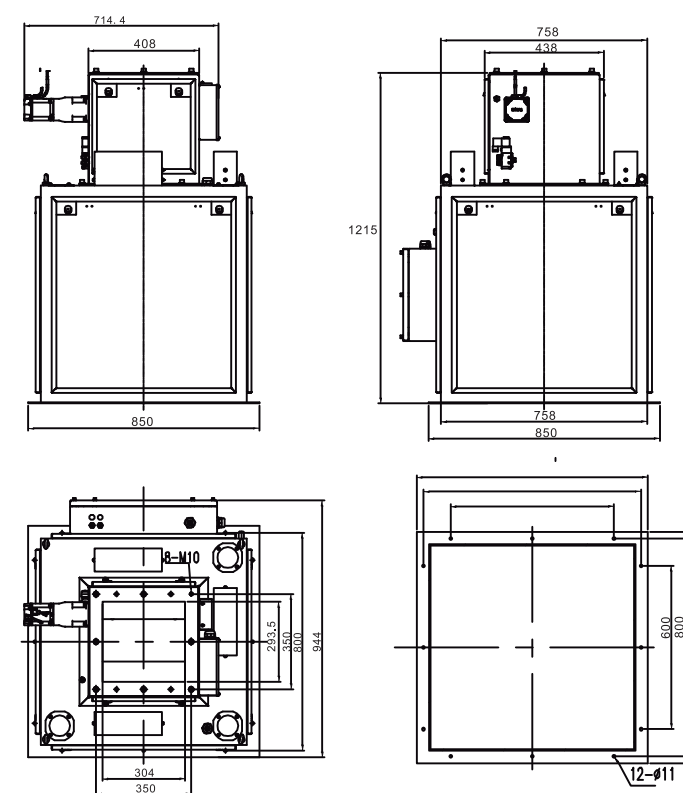
## Specification

Model	PaxGO AF-50K (3 load cells structure)	AF-50K Jumbo Bag Packing (3 load cells structure)
Weighing range	10~50Kg	500kg~50t
Division	1g	1g
Accuracy range*	$\pm 10\sim 25g$	$\pm 500g$
Top speed*	1150pcs/h	1t/min
Volume	86L	
Feeding method	Feeding control by servo, pneumatic discharging	
Material	SS304, carbon steel	
I/O	8 output(5V), 8 input(24V)	
Communication	RS485, Modbus TCP/IP	
Pneumatic	0.4~0.6MPa	
Power	Single Phase AC-220V $\pm 10\%$ , 50/60HZ, 1KW	
Working environment	0~40°C, 90%R.H condensation is not allowed	

\*Accuracy depends on the natures of material and flow rate.  
Speed depends on the density and flow rate of the materials.

## Structure & Dimension

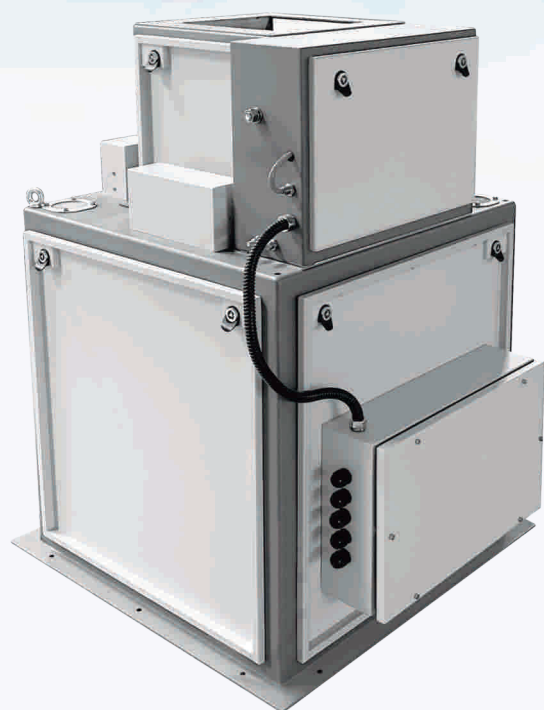
Unit: mm



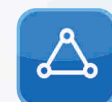
\*Specification and dimension may be upgraded, please consult sales manager for the latest info.



# PNEUMATIC VERSION AF-50K



**25-50kg**  
Weighing range



Stable  
Performance



Easy  
Installation

**±10~25g**  
Accuracy range



Pneumatic  
Cylinder Control



High Speed  
Weighing

**950** Pcs/h  
Top speed

## Features:

- **Granular material:** design for packing plastic particles, rice, sugar and other granular material;
- **Easy installation:** module design, easy for installation and dismount;
- **Convenient setup:** self-adjust function with target value set only;
- **High-speed performance:** pneumatic cylinder control, speed can reach above 950pcs/h;
- **Weighing accurate:** weighing range is 25~50kg, accuracy range is ±10~25g.

## Optional:



10-inch touch screen

User-friendly interface design,  
vivid display, easy to operate.



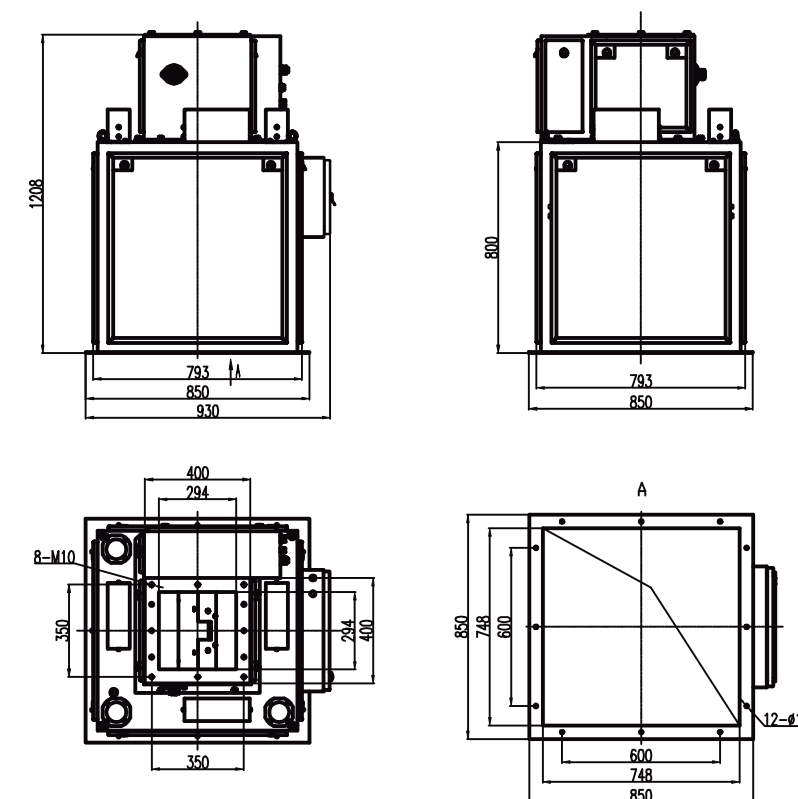
## Specification

Model	PaxGO AF-50K Pneumatic Version
Weighing range	25~50Kg
Division	1g
Accuracy range*	±10~25g
Top speed*	950pcs/h
Volume	86L
Feeding method	Pneumatic cylinder control
Material	SS304,carbon steel
I/O	8 output(5V),8 input(24V)
Communication	RS485,Modbus TCP/IP
Pneumatic	0.4~0.6MPa
Power	Single Phase AC-220V ±10%,50/60HZ,1KW
Working environment	0~40°C, 90%R.H condensation is not allowed

\*Accuracy depends on the natures of material and flow rate.  
Speed depends on the density and flow rate of the materials.

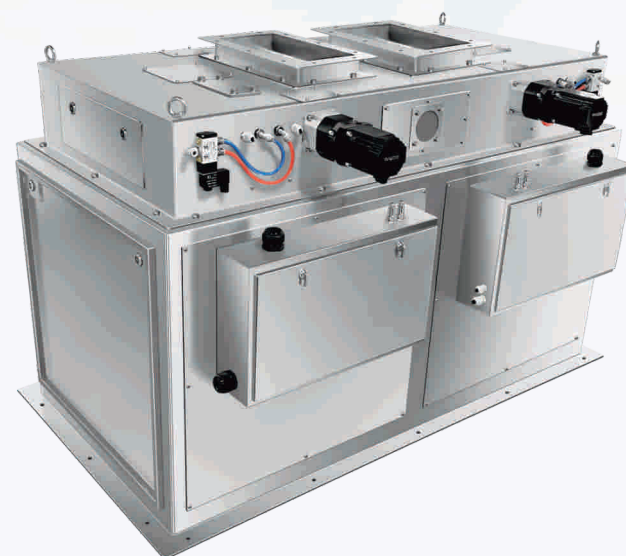
## Structure & Dimension

Unit: mm



\*Specification and dimension may be upgraded, please consult sales manager for the latest info.

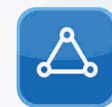
# DUPLEX PACKING FILLER AF-50K II



**10-50<sub>kg</sub>**  
Weighing range

**±10~25<sub>g</sub>**  
Accuracy range

**1800<sub>Pcs/h</sub>**  
Top speed



Stable  
Performance



Easy  
Installation



Servo Motor  
Control



Weighing  
Accurate

## Features:

- **Granular material:** design for packing plastic particles, rice, sugar and other granular material;
- **Easy dismounting:** module design of measuring hopper for easy cleaning;
- **Parameter setting:** self-adjust function with target value set only;
- **Stable performance:** servo motor controls feeding process;
- **Fast and accurate:** weighing range is 10-50kg, Speed can reach 1800 pcs/h, and accuracy range  $\pm 10\sim 25g$ .

## Optional:



10-inch touch screen

User-friendly interface design,  
vivid display, easy to operate.



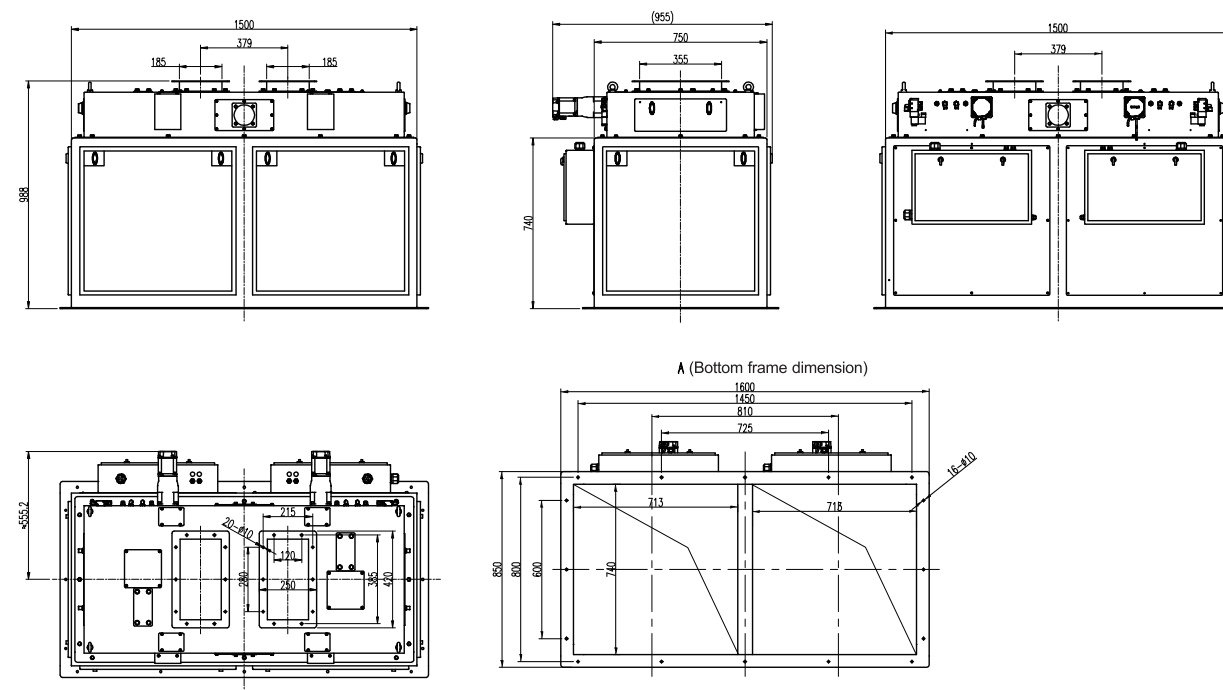
## Specification

Model	PaxGO AF-50K II
Weighing range	10~50Kg
Division	1g
Accuracy range*	$\pm 10\sim 25g$
Top speed*	1800pcs/h
Volume	86L x 2
Feeding method	Feeding control by servo, pneumatic discharging
Material	SS304, carbon steel
I/O	8 output(5V), 8 input(24V)
Communication	RS485, Modbus TCP/IP
Pneumatic	0.4~0.6MPa
Power	Single Phase AC-220V $\pm 10\%$ , 50/60HZ, 1KW
Working environment	0~40°C, 90%R.H condensation is not allowed

\*Accuracy depends on the natures of material and flow rate.  
Speed depends on the density and flow rate of the materials.

## Structure & Dimension

Unit: mm

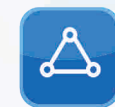


\*Specification and dimension may be upgraded, please consult sales manager for the latest info.

# Duplex Packing Filler (3 load cells structure) AF-50KII



**10-50**kg  
Weighing range



Stable  
Performance



Easy  
Installation

**±10~25**g  
Accuracy range



Servo Motor  
Control



Weighing  
Accurate

**2000** Pcs/h  
Top speed

## Features:

- **Granular material:** design for packing plastic particles, rice, sugar and other granular material;
- **Easy dismounting:** module design of measuring hopper for easy cleaning;
- **Parameter setting:** self-adjust function with target value set only;
- **Stable performance:** servo motor controls feeding process;
- **Fast and accurate:** weighing range is 10-50kg, Speed can reach 2000 pcs/h, and accuracy range  $\pm 10\sim 25$ g.

## Optional:



10-inch touch screen

User-friendly interface design,  
vivid display, easy to operate.



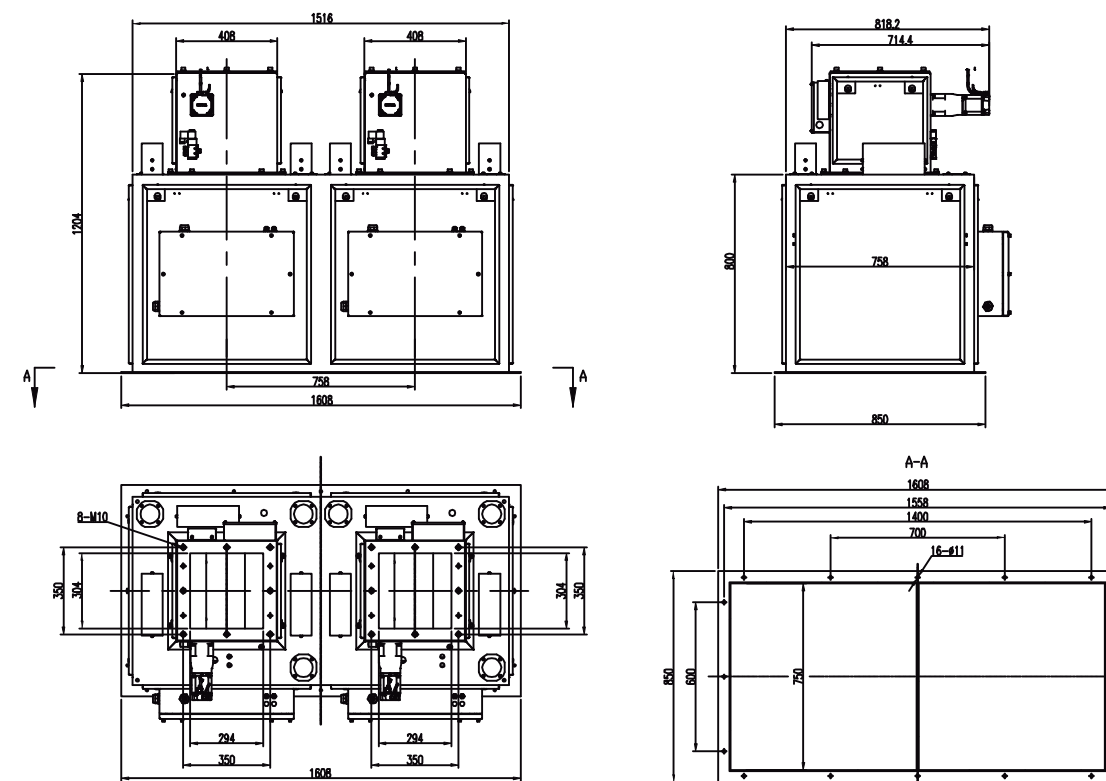
## Specification

Model	PaxGO AF-50KII (3 load cells structure)
Weighing range	10~50Kg
Division	1g
Accuracy range*	$\pm 10\sim 25$ g
Top speed*	2000pcs/h
Volume	86L x 2
Feeding method	Feeding control by servo, pneumatic discharging
Material	SS304, carbon steel
I/O	8 output(5V), 8 input(24V)
Communication	RS485, Modbus TCP/IP
Pneumatic	0.4~0.6MPa
Power	Single Phase AC-220V $\pm 10\%$ , 50/60HZ, 1KW
Working environment	0~40°C, 90%R.H condensation is not allowed

\*Accuracy depends on the natures of material and flow rate.  
Speed depends on the density and flow rate of the materials.

## Structure & Dimension

Unit: mm

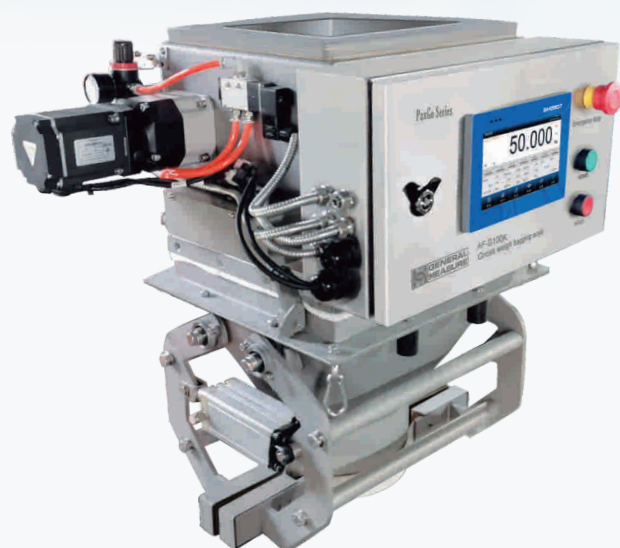


\*Specification and dimension may be upgraded, please consult sales manager for the latest info.



# GROSS WEIGHER AF-G100K

AGross Weigher AF-G100K is suitable for packing 10~100kg free-flowing granular materials. High accuracy and fast speed, stable and durable.



**10-100kg**  
Weighing range



Stable  
Performance



Easy  
Installation

**±10~30g**  
Accuracy range



Servo Motor  
Control



Weighing  
Accurate

**600** Pcs/h  
Top speed

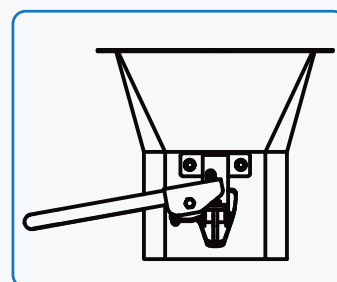
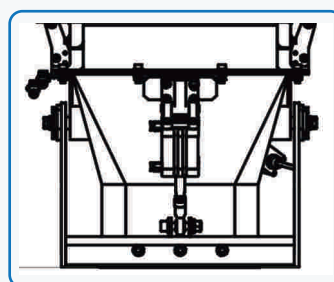
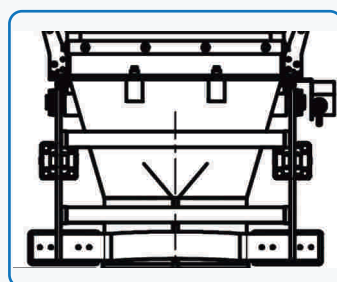


## Features:

- Servo motor feeding;
- SS304 for whole scale;easy cleaning;
- 7-inch touch screen for easy operation;
- Support RS232 and RS485, USB for data exporting;

A variety of bag clamps are available:

- A. Pneumatic type (belt);
- B. Pneumatic type (rubber);
- C. Gravity type (no air pump required);



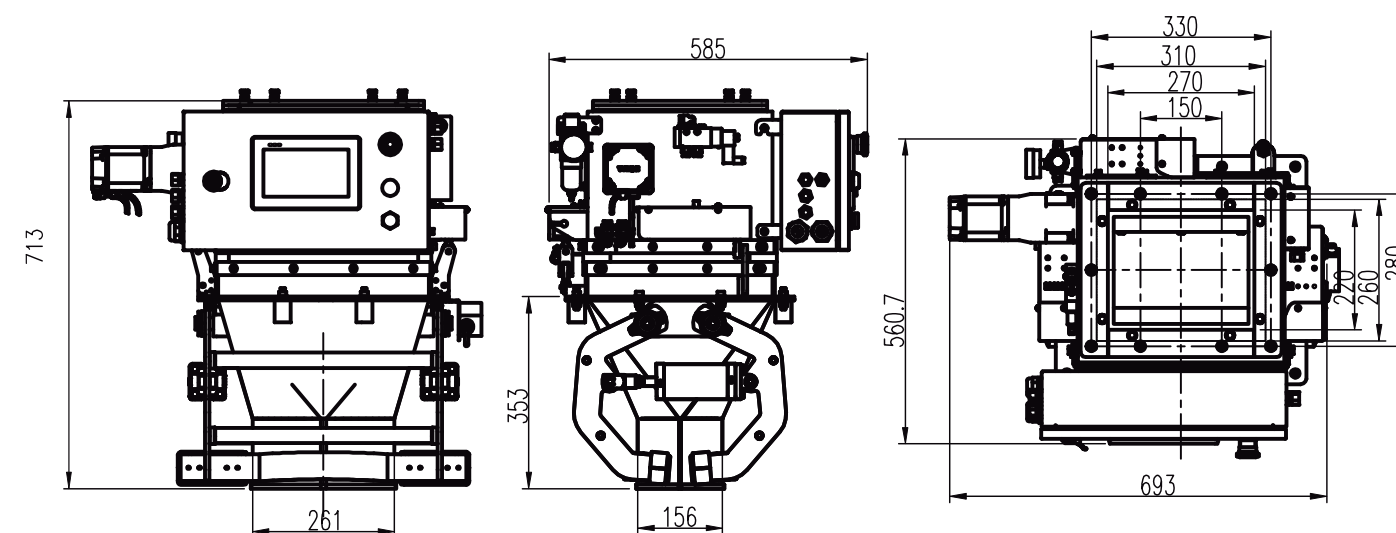
## Specification

Model	AF-G100K
Weighing range	10~100Kg
Division	1g
Accuracy range*	±10~30g
Top speed*	600 pcs/h
Feeding method	Servo motor
Material	SS304
Bag Clamps	A. Pneumatic type (belt); B. Pneumatic type (rubber); C. Gravity type (no air pump required);
Communication	RS485, RS232, USB
Air Source	0.4-0.6MPa 2m³/h(No air pump required when selecting gravity type)
Power	Single Phase AC220V±10%, 50/60Hz, 1KW
Working environment	0~40°C, 90%R.H condensation is not allowed

\*Accuracy depends on the natures of material and flow rate.  
Speed depends on the density and flow rate of the materials.

## Structure & Dimension

Unit: mm



\*Specification and dimension may be upgraded, please consult sales manager for the latest info.



# ENTERPRISE PROFILE

General Measure established in 1993, as one of China's earliest industrial weighing company who is also a national high-tech enterprise, has over 50 people in the R&D team. For decades, we have been committed to improving the automatic process of industrial weighing and the precision of weighing control.

In 2003, we began to open the overseas market. Since 2006, General Measure dominated the high-end market and occupying more than 25% of the market in China. To expand the global business scale, we have been focusing on overseas markets since 2012. It has been seen that the average sales growth is above 30% every year.

We will continue to provide reliable industrial weighing indicators and equipment with excellent performance and weighing solutions with innovative value to our partners. Listening, Innovating, and growing together is our value, which guides us to achieve win-win cooperation by helping clients achieve their goals.



**30<sup>+</sup>**  
years  
Industry Experience



**50<sup>+</sup>**  
Country Sales



**200<sup>+</sup>**  
R&D Patents



**2000<sup>+</sup>**  
Applications



# CUSTOMER CASE

## Multi-applications

GM products are widely used in lithium battery, chemical industry, building materials, foods, feed schemicals, pharmaceutical industries and etc.



Chemical industry



Grain industry



Feed industry



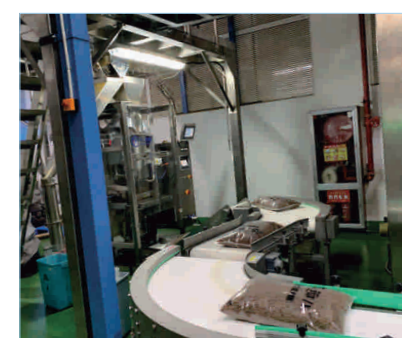
Building materials industry



Logistics industry



Chemical industry



Fertilizer industry



Lithium battery industry



Chemical industry