



Egret Series

Versatile Checkweigher

Egret Series

Versatile Checkweigher

High Speed, Great Efficient **250 pcs/min**

Wide Weighing Range **500~3000g**

Display Accuracy **±0.1g** | Best Accuracy **±0.3g**



Designed to enhance efficiency and reduce costs, Egret delivers high precision, ease of use, and strong adaptability across industries.

Precision and Stability

Patented floating taut band weightable; supports up to 400 ppm with automated rejection for weighing, rejecting non-conforming product and quality controlling.

Easy Maintenance

Hygienic round-tube frame, **IP65 washdown**, food-grade design, compact layout, adjustable height for online weighing applications in various industrial settings.

Cross-Industry Compatibility

Suitable for dry and wet environments: food, pharma, personal care, chemicals, petrochemicals, rubber, automotive, new energy, consumer goods, and more. full coverage of weight control across all industries.



Food Industry



Pharmaceutical Industry



Personal Care



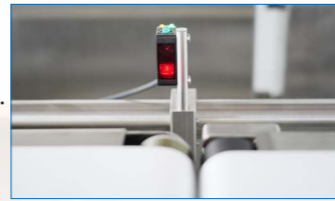
Meat Industry



Stable and Precise Performance

High Precision

- Photoelectric sensors detect product position. It can maintain excellent precision even at high speeds.
- **AI dynamic learning** simplifies installation and setup.



Stable and Durability

- Full stainless-steel construction, robust and durable.



- High-torque sealed servo motors with minimal maintenance.



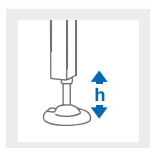
Hygienic Design

- Compact, small footprint; Cleanable in under **5** minutes.
- Smooth surfaces reduce dirt accumulation and clogging risk.



Easy Maintenance

- Tool-free conveyor and belt replacement. Quick-connect cables and modular electronics enable maintenance within **15** minutes.



Height adjustable



Smart and User-Friendly Operation

User-Friendly Interface

- Proprietary operating system, safe and reliable.
- **15-inch** touchscreen;
- The graphical interface is intuitive and user-friendly;
- Multi-language support and permission control.



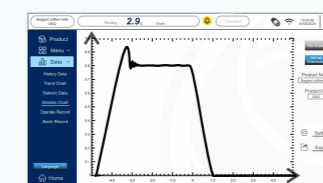
Intelligent Learning



- **AI-based** intelligent dynamic filtering; automatic optimization;

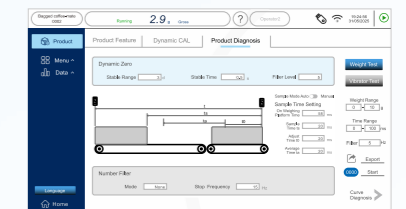
Data Analytics

- Multiple big-data analysis dashboards; Real-time production trend monitoring with **SPC**;

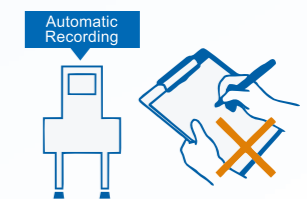


Sampling Time Control

- Adaptive sampling settings for different product types;
- Scenario-based visualization to improve accuracy and efficiency.



- Up to **200** product recipes improve the efficiency of production turnover;
- **400 GB** data storage for full traceability;



All-in-One Inspection Upgrade Solution

To enhance end-to-end quality control, the Egret series can be seamlessly integrated with General Measure's **Kestrel 500** or **Plover 100** metal detectors. This combination forms a unified workstation that delivers both precise weight control and metal contamination detection, significantly improving production efficiency and product qualification rates.



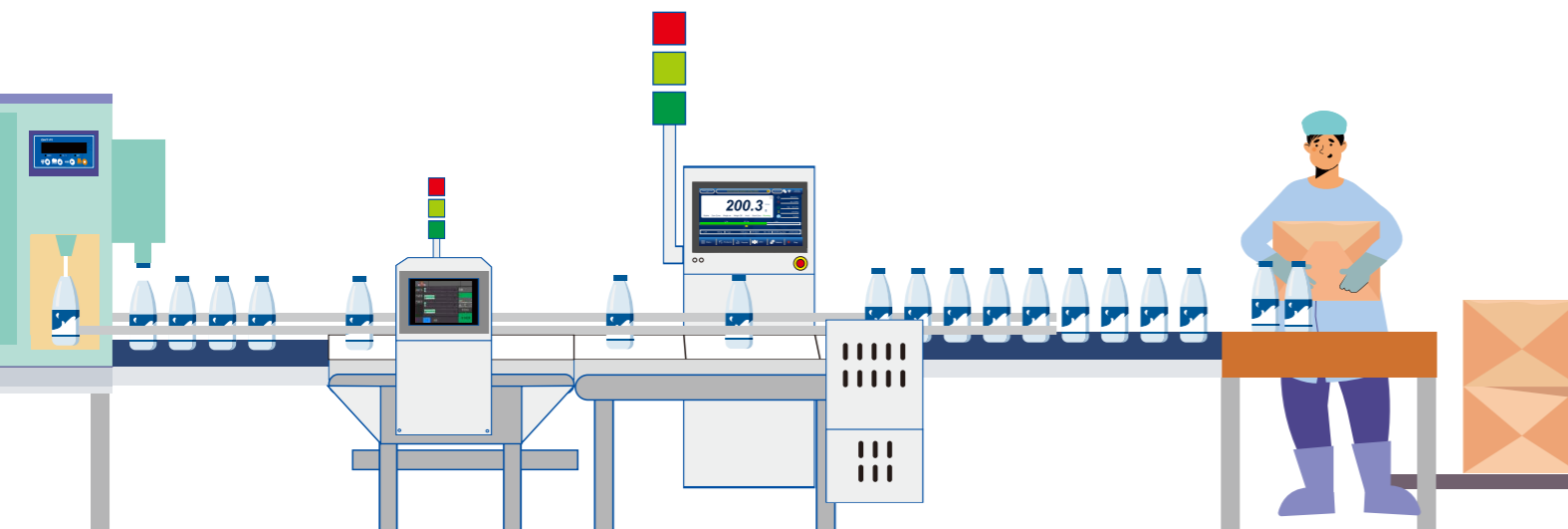
Kestrel 500 metal detector



Plover 100 metal detector

Embedded Integration

- The checkweighing module can be flexibly embedded into large upstream or downstream packaging or filling systems. Guided by external control units, it divert qualified and unqualified products, enabling efficient, streamlined production line management.

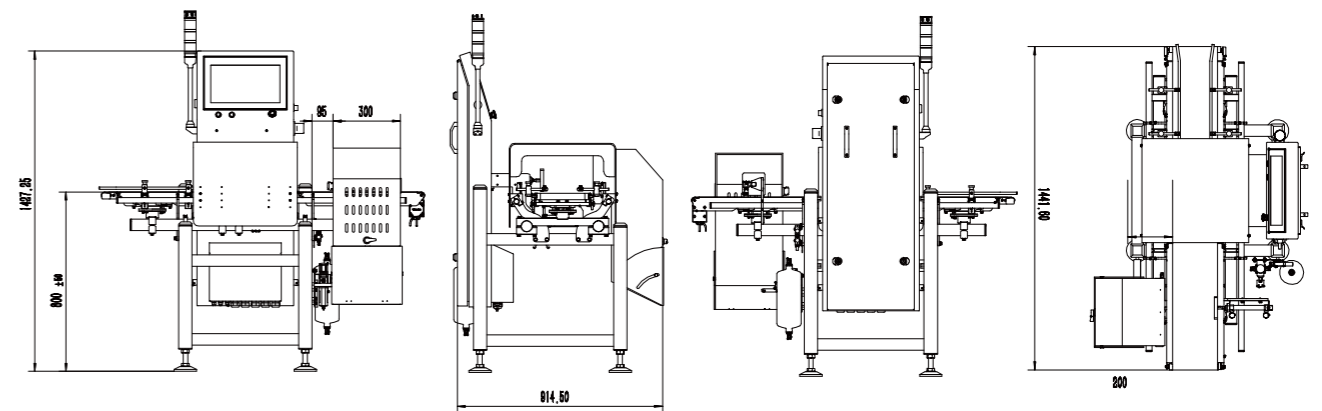


Technical Specifications

Model	Egret C-300
Weight Range	500~3000g
Speed	250 ppm
Accuracy	±0.3g
Motor	Servo Motor
Structure	SS304 / Aluminum
IP Grade	Standard IP65
Operating Temperature	0°C~+45°C (+32°F~+113°F)
Humidity	20%~90% , Non- condensing
Power Supply	200-240 VAC, 50/60 HZ, 660W
Air Supply	5.5-6.9 bar (80-100 psi)
Line Height	800mm±50mm
Communication	RS485, Modbus TCP/IP

- The actual accuracy depends on the product's length, weight, speed and stability.
- The push rejector needs an independent conveying device, and the cantilever length of the conveyor should not exceed 1250mm (combined configuration).

Dimensions (Unit: mm)



*Parameters and dimensions may be upgraded. Please consult in real time for the latest information.